



# Kingside, Grove

Guide Price £380,000

Wantage

**Simpsons**

The Proactive Agent



SCAN THE  
QR CODE  
FOR DETAILS





# Kingside, OX12

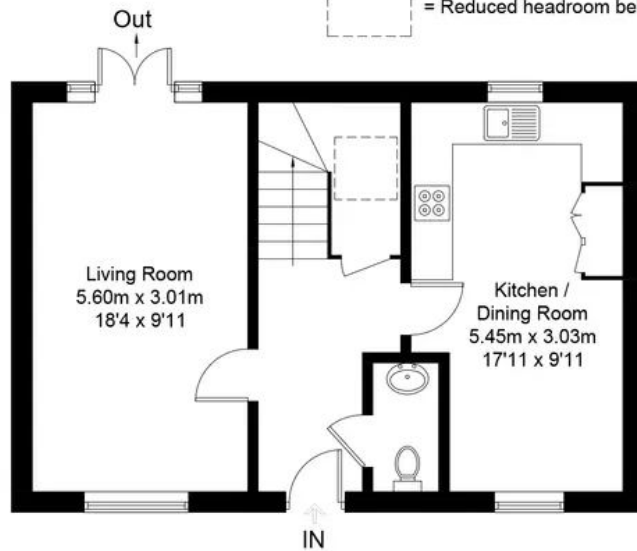
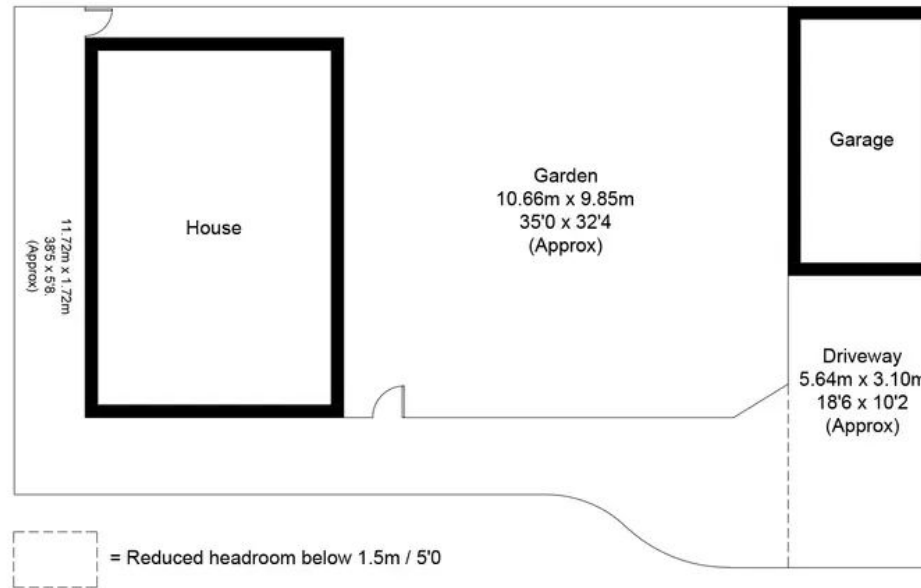
Approximate Gross Internal Area = 95.5 sq m / 1028 sq ft

Garage = 17.7 sq m / 191 sq ft

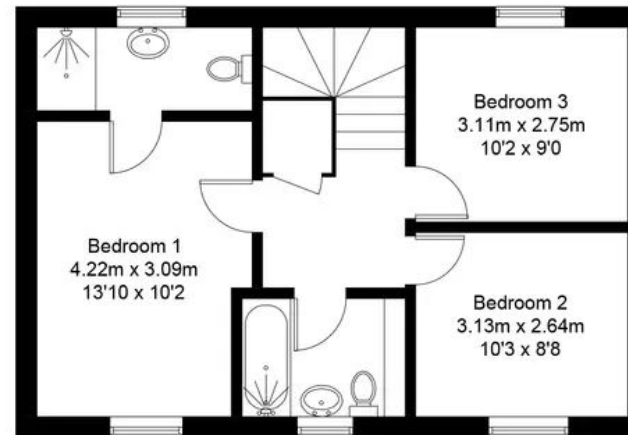
Total = 113.2 sq m / 1219 sq ft

Garden / Driveway Area = 192.0 sq m / 2066 sq ft

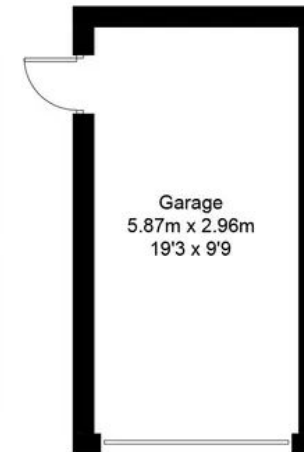
For identification only - Not to scale



**Ground Floor**



**First Floor**



(Not Shown In Actual  
Location / Orientation)

# Kingside

Grove, Wantage

A beautifully presented three bedroom detached home within close proximity of local amenities and with off-street parking and a garage.

Council Tax band: D

Tenure: Freehold

- Garage And Off Street Parking
- Beautifully Presented Three Bedroom Detached Home
- Close To Local Amenities
- Landscaped Private Rear Garden



SCAN THE  
QR CODE  
**TO BOOK**  
YOUR VIEWING



