



25 Greenheart Way, Southmoor

Abingdon

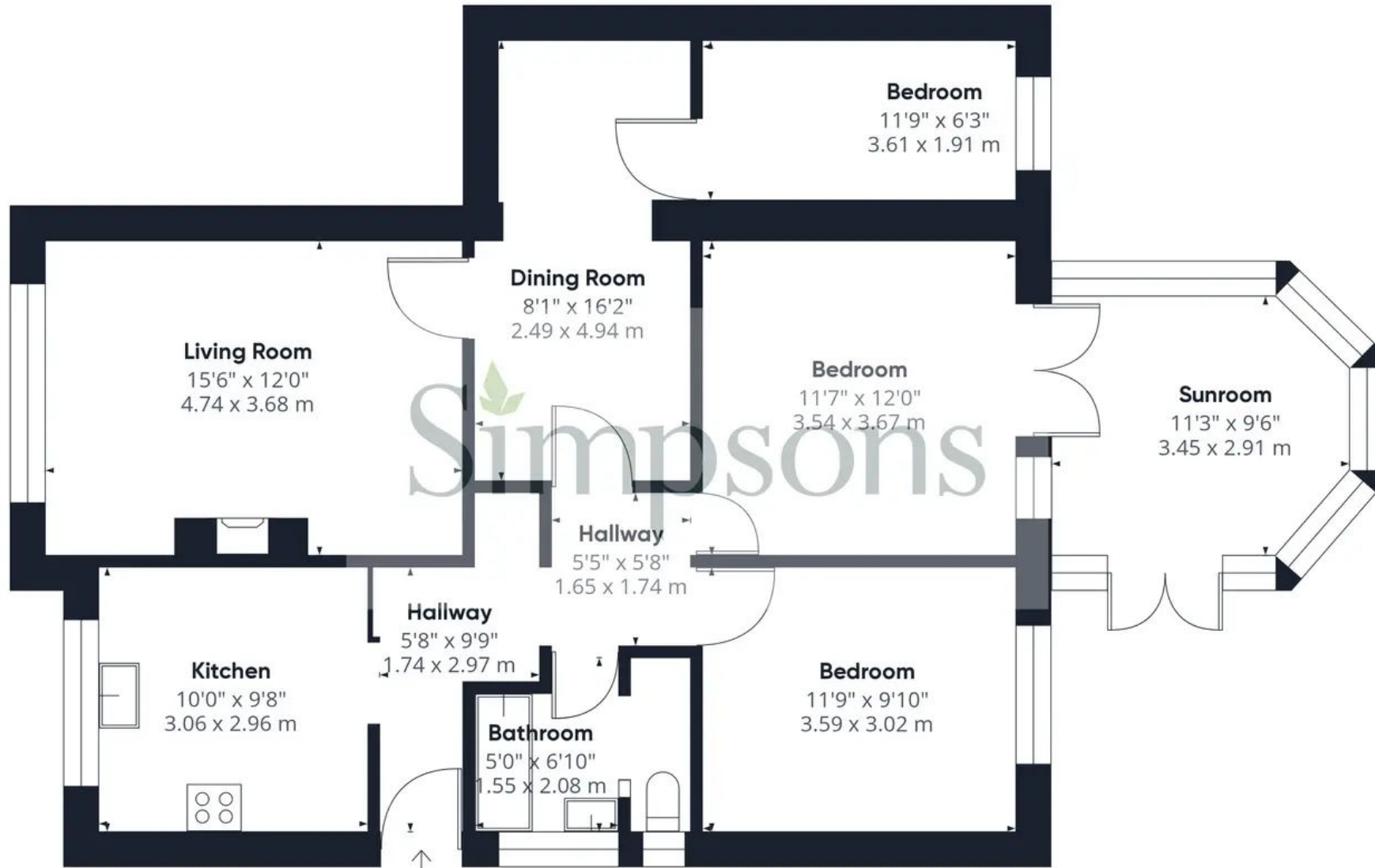
Simpsons
The Proactive Agent

£425,000



SCAN THE
QR CODE
FOR DETAILS





Approximate total area⁽¹⁾
 994.78 ft²
 92.42 m²

(1) Excluding balconies and terraces

While every attempt has been made to ensure accuracy, all measurements are approximate, not to scale. This floor plan is for illustrative purposes only.

25 Greenheart Way

Southmoor, Abingdon

A well-presented three bedroom link-detached bungalow located in the heart of Southmoor and just a short walk to local amenities.

Council Tax band: D

Tenure: Freehold

- Large And Private Rear Garden
- Well-Presented Accommodation Throughout
- Walking Distance To Local Amenities
- Gas Central Heating And UPVC Double Glazing



SCAN THE
QR CODE
TO BOOK
YOUR VIEWING



