



9 Wolage Drive, Grove

Wantage

Guide Price £225,000

Simpsons
The Proactive Agent

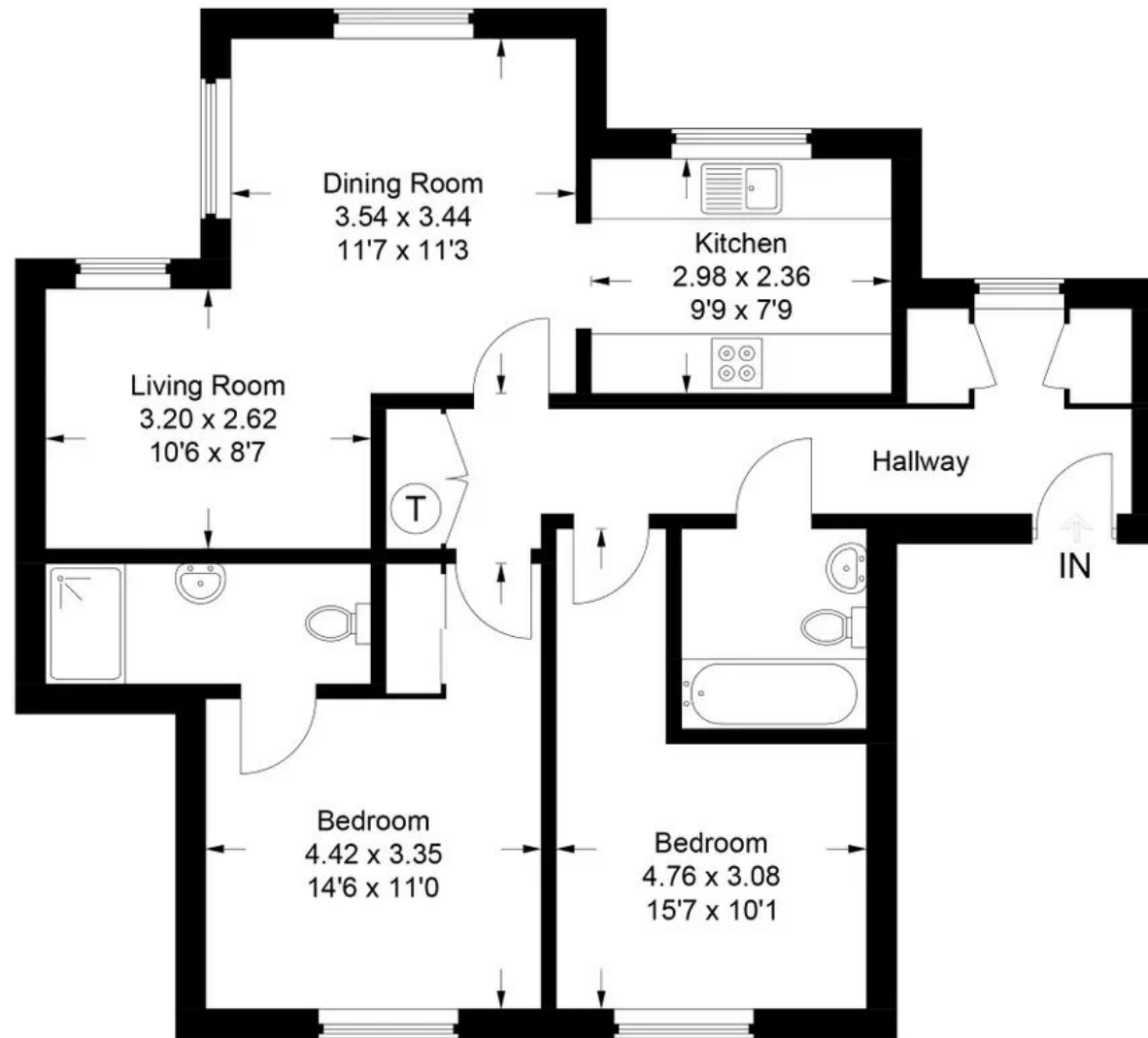


SCAN THE
QR CODE
FOR DETAILS





Approximate Gross Internal Area
72.2 sq m / 777 sq ft



Second Floor

This plan is for layout guidance only. Not drawn to scale unless stated. Windows and door openings are approximate. Whilst every care is taken in the preparation of this plan, please check all dimensions, shapes and compass bearings before making any decisions reliant upon them.

9 Wolage Drive

Grove, Wantage

A delightful and beautifully presented two bedroom top floor apartment with allocated parking.
Council Tax band: C

Tenure: Leasehold

- Allocated parking
- Master with en-suite
- Top floor apartment
- open-plan living arrangement



SCAN THE
QR CODE
TO BOOK
YOUR VIEWING



