



24 Virginia Way, Abingdon

Abingdon

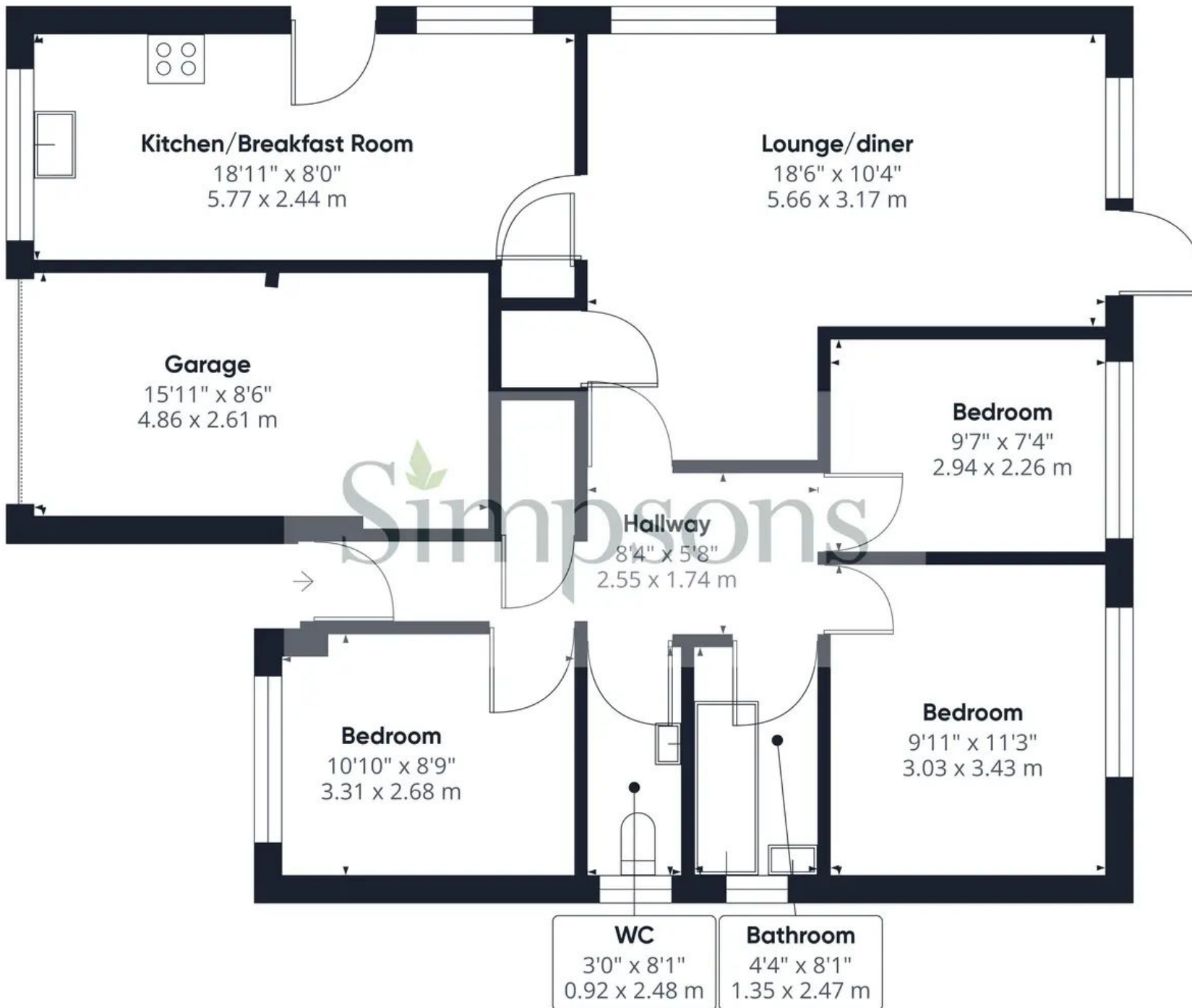
Simpsons
The Proactive Agent

Guide Price £390,000



SCAN THE
QR CODE
FOR DETAILS





Approximate total area⁽¹⁾
973.25 ft²
90.42 m²

(1) Excluding balconies and terraces

While every attempt has been made to ensure accuracy, all measurements are approximate, not to scale. This floor plan is for illustrative purposes only.

24 Virginia Way

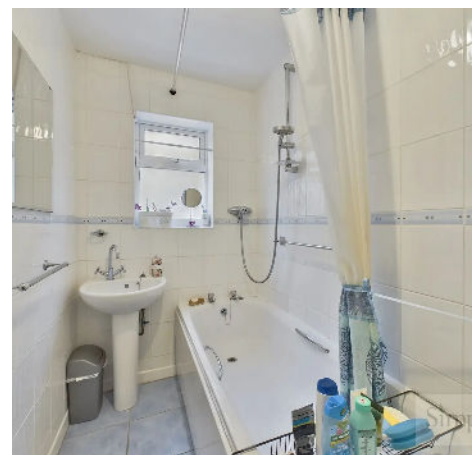
Abingdon, Abingdon

A spacious three bedroom bungalow in a peaceful residential location, close to local shops, bus routes and countryside.

Council Tax band: D

Tenure: Freehold

- A larger design, three bedroom detached bungalow and a peaceful, well kept road on the outskirts of Abingdon.
- Large open plan lounge/diner overlooking the rear garden.
- Kitchen/breakfast room with space for dining table and chairs.
- Extensive block pave driveway parking.
- Well proportioned rear garden receiving sun light from North and Westerly aspects.
- Well kept throughout, ready to move into.



SCAN THE
QR CODE
TO BOOK
YOUR VIEWING



