



25 Abingdon Road, Drayton

Abingdon

Guide Price **£475,000**

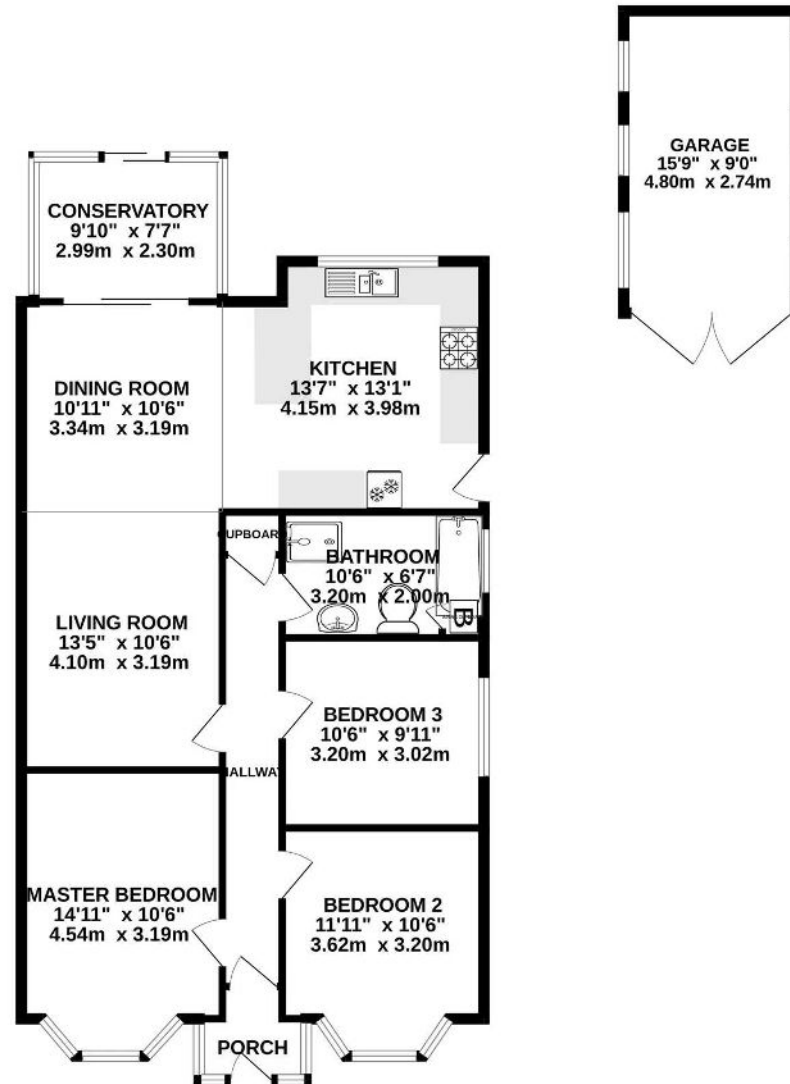
Simpsons
The Proactive Agent



SCAN THE
QR CODE
FOR DETAILS



GROUND FLOOR
1176 sq.ft. (109.3 sq.m.) approx.



TOTAL FLOOR AREA: 1176 sq.ft. (109.3 sq.m.) approx.

Whilst every attempt has been made to ensure the accuracy of the floorplan contained here, measurements of doors, windows, rooms and any other items are approximate and no responsibility is taken for any error, omission or mis-statement. This plan is for illustrative purposes only and should be used as such by any prospective purchaser. The services, systems and appliances shown have not been tested and no guarantee as to their operability or efficiency can be given.
Made with Metropix ©2023

25 Abingdon Road

Drayton, Abingdon

For sale with no onward chain, offering serious potential for extension, this well proportioned bungalow sits in a very large plot in the popular village of Drayton.

Council Tax band: D

Tenure: Freehold

- Sitting on a plot just under quarter of an acre (0.17/706sqm), this bungalow offers potential to significantly extend.
- superb open plan kitchen/diner sitting room area overlooking the rear garden.
- Three well proportioned, double bedrooms.
- Village location, within walking distance of local shops, Primary School and two local Pubs.
- No onward chain.



SCAN THE
QR CODE
TO BOOK
YOUR VIEWING

