



# Orchard Way, Wantage

Guide Price £275,000

Wantage

**Simpsons**

The Proactive Agent

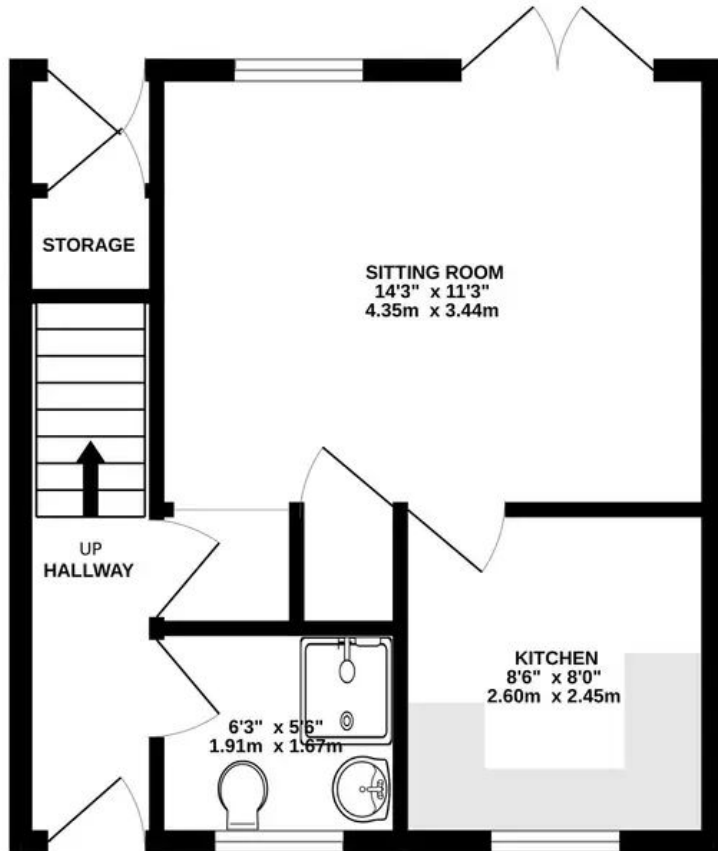


SCAN THE  
QR CODE  
FOR DETAILS

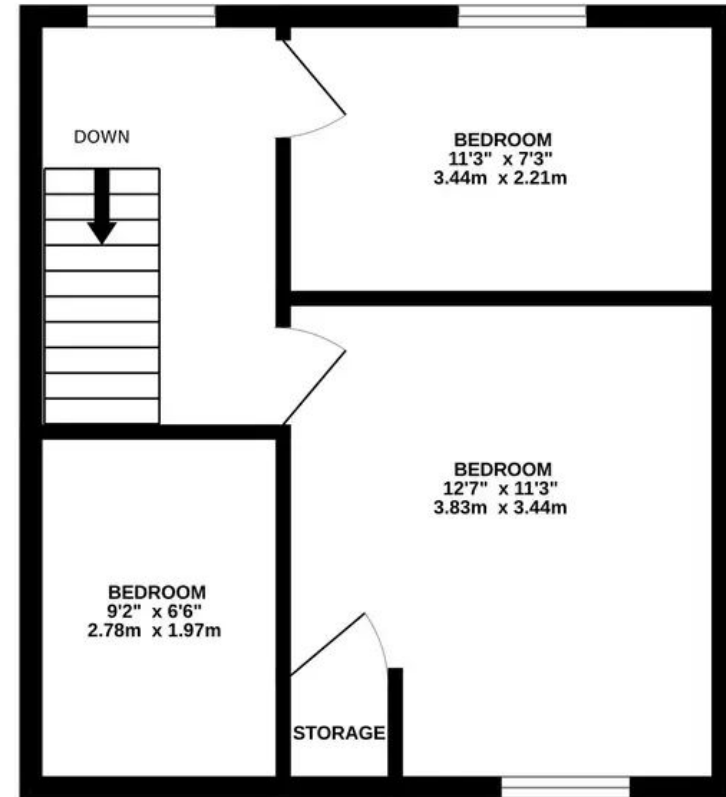




**GROUND FLOOR**  
352 sq.ft. (32.7 sq.m.) approx.



**1ST FLOOR**  
352 sq.ft. (32.7 sq.m.) approx.



**TOTAL FLOOR AREA : 704 sq.ft. (65.4 sq.m.) approx.**

Whilst every attempt has been made to ensure the accuracy of the floorplan contained here, measurements of doors, windows, rooms and any other items are approximate and no responsibility is taken for any error, omission or mis-statement. This plan is for illustrative purposes only and should be used as such by any prospective purchaser. The services, systems and appliances shown have not been tested and no guarantee as to their operability or efficiency can be given.

Made with Metropix ©2023

# Orchard Way

Wantage, Wantage

SIMPSONS REFURBISHMENT DIVISION - A three bedroom semi-detached home with scope to enhance and extend STPP and with no onward chain.

Council Tax band: C

Tenure: Freehold

- No onward chain
- Renovation project with scope to enhance and extend STPP
- Catchment for Wantage Church of England Primary School
- South facing garden



SCAN THE  
QR CODE  
**TO BOOK**  
YOUR VIEWING

