



1 Pike Reach, Wantage

Wantage

Guide Price **£425,000**

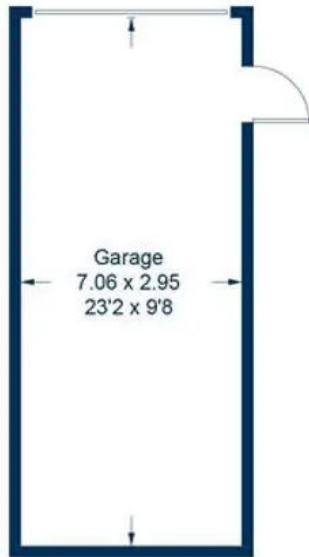
Simpsons

The Proactive Agent



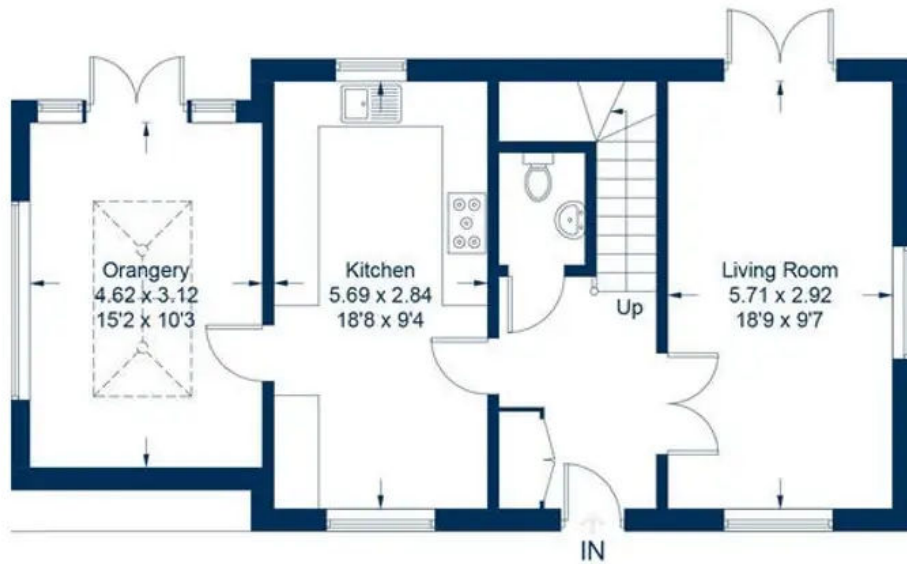
SCAN THE
QR CODE
FOR DETAILS





Approximate Gross Internal Area
 Ground Floor = 62.5 sq m / 673 sq ft
 First Floor = 48.3 sq m / 520 sq ft
 Garage = 20.8 sq m / 224 sq ft
 Total = 131.6 sq m / 1,417 sq ft

Garden
 15.98 x 11.05
 52'5 x 36'3



Ground Floor



First Floor

1 Pike Reach

Wantage, Wantage

This superb, extended family home, has been finished to an exceptional standard and benefits from a unique landscaped rear garden with a timber frame gazebo and direct access to the garage and driveway parking.

Council Tax band: E

Tenure: Freehold

- Three well proportioned bedrooms including a master bedroom with an en-suite shower room.
- South West facing, landscaped rear garden.
- Detached garage and driveway parking.
- 'Orangery' style extension creating a 'large' dining area or family room with further underfloor heating and Minoli tiles.
- Stunning kitchen/diner with underfloor heating, Minoli tiles and quartz worktops.
- £240 per year estate service charge.
- No onward chain.



SCAN THE
QR CODE
TO BOOK
YOUR VIEWING



