



Flat , Fleur De Lis, Wootton Road

Abingdon

Simpsons
The Proactive Agent

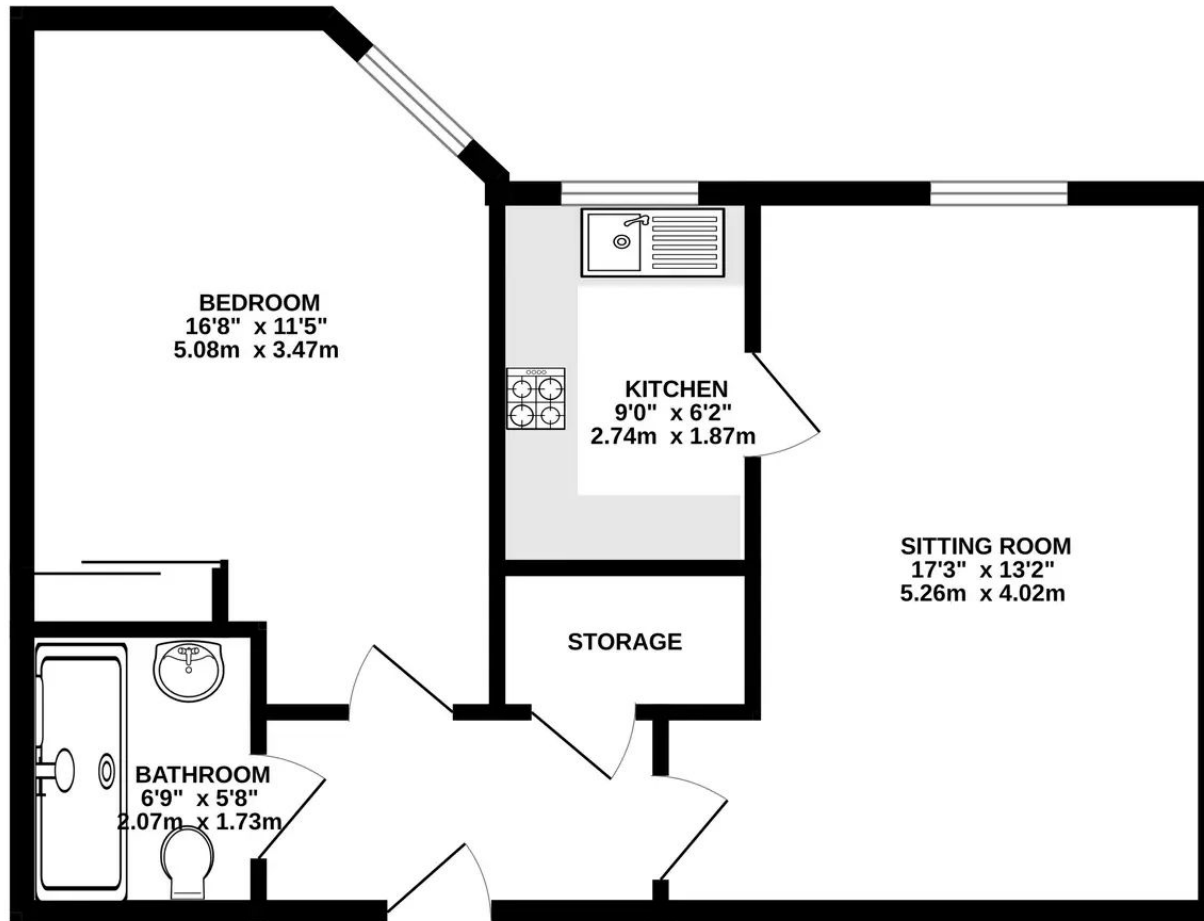
£175,000



SCAN THE
QR CODE
FOR DETAILS



GROUND FLOOR
532 sq.ft. (49.4 sq.m.) approx.



TOTAL FLOOR AREA : 532 sq.ft. (49.4 sq.m.) approx.

Whilst every attempt has been made to ensure the accuracy of the floorplan contained here, measurements of doors, windows, rooms and any other items are approximate and no responsibility is taken for any error, omission or mis-statement. This plan is for illustrative purposes only and should be used as such by any prospective purchaser. The services, systems and appliances shown have not been tested and no guarantee as to their operability or efficiency can be given.
Made with Metropix ©2023

Flat

Fleur De Lis, Abingdon

Conveniently located just a short walk from Abingdon town centre is this immaculately presented second floor retirement apartment in the exclusive Fleur De Lis development.

Council Tax band: D

Tenure: Leasehold

- Larger design, top floor apartment within a very short walk of the elevator
- Maintenance fee - £4282 per year (117 year leasehold term)
- Resident lounge and gardens.
- Parking available.
- Guest suite available by prior arrangement (fees payable).
- No onward chain.



SCAN THE
QR CODE
TO BOOK
YOUR VIEWING



