



## Bluebell Lane, Didcot

Guide Price £395,000

Didcot

**Simpsons**  
The Proactive Agent



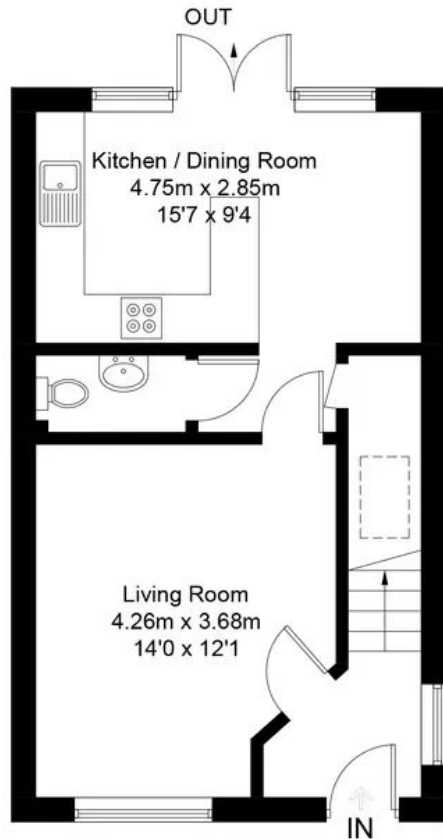
SCAN THE  
QR CODE  
FOR DETAILS



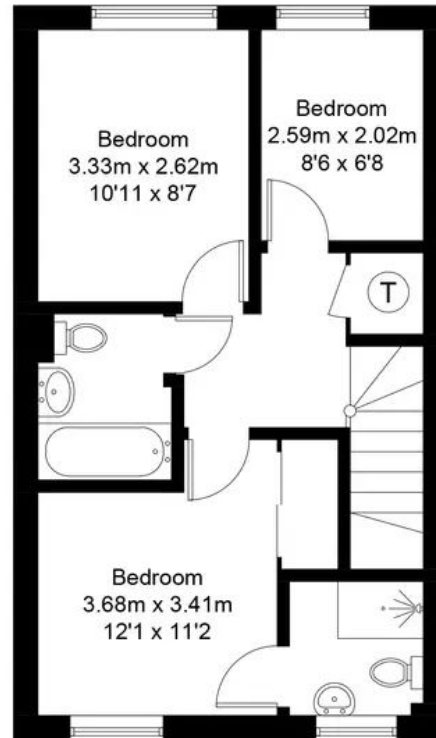


# Bluebell Lane, OX11

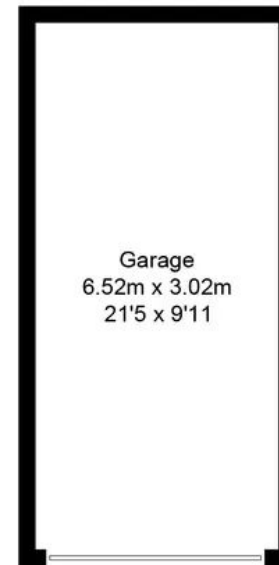
Approximate Gross Internal Area = 80.6 sq m / 867 sq ft  
Garage = 19.5 sq m / 210 sq ft  
Total = 100.1 sq m / 1077 sq ft  
External Area = 151.1 sq m / 1626 sq ft  
For identification only - Not to scale



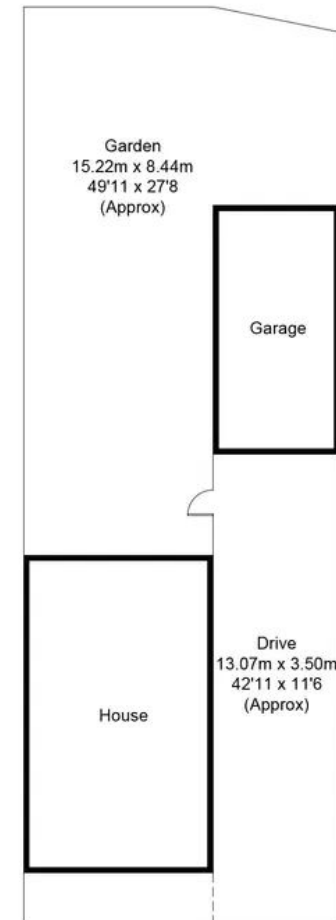
**Ground Floor**



**First Floor**



(Not Shown In Actual  
Location / Orientation)



**Site Plan**



# Bluebell Lane

Didcot, Didcot

A beautifully presented four bedroom home with a private and south facing garden located in the Great Western Park.

- Close to local amenities, shops and schools
- Built less than 5 years ago and very well maintained
- Private and sunny garden
- Single garage and driveway parking



SCAN THE  
QR CODE  
TO BOOK  
YOUR VIEWING





