



2 Moley Gardens, Wantage

Wantage

Guide Price £485,000

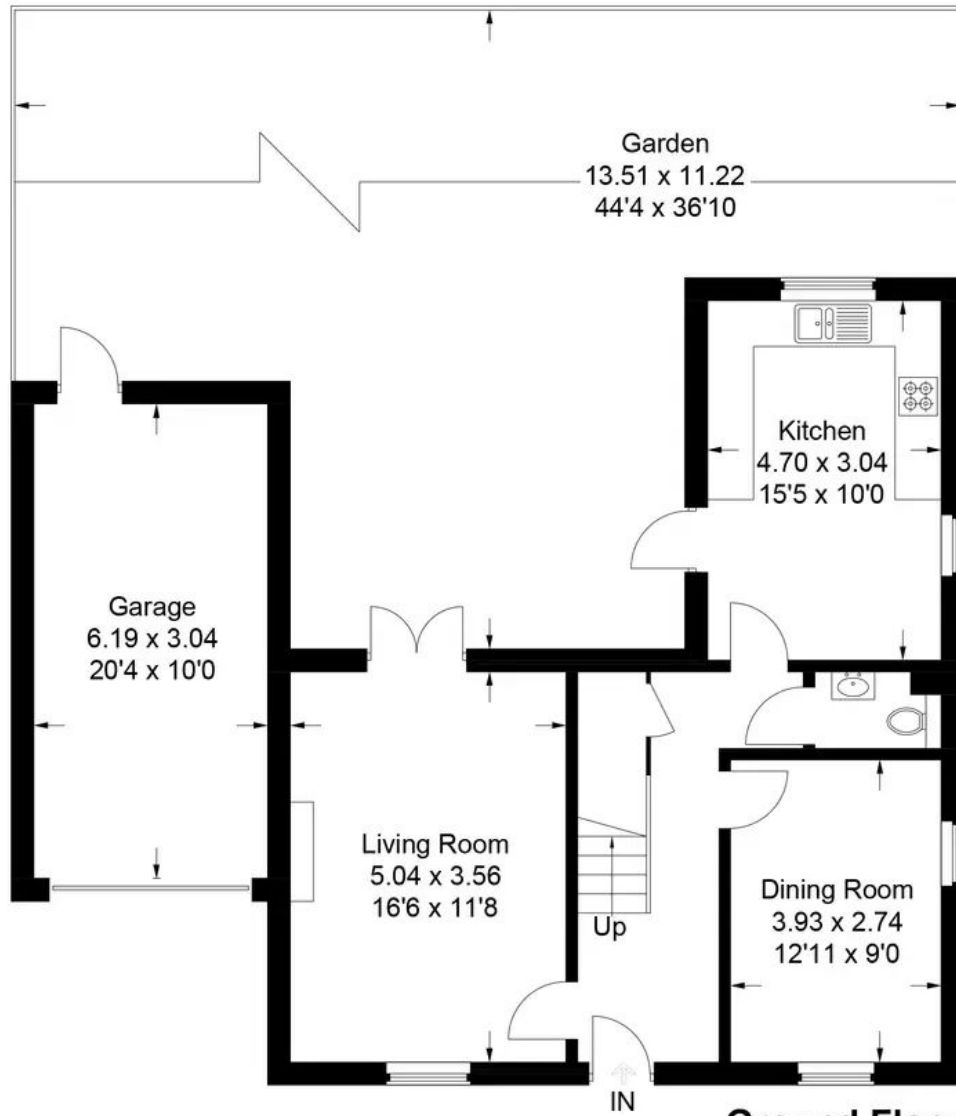
Simpsons
The Proactive Agent



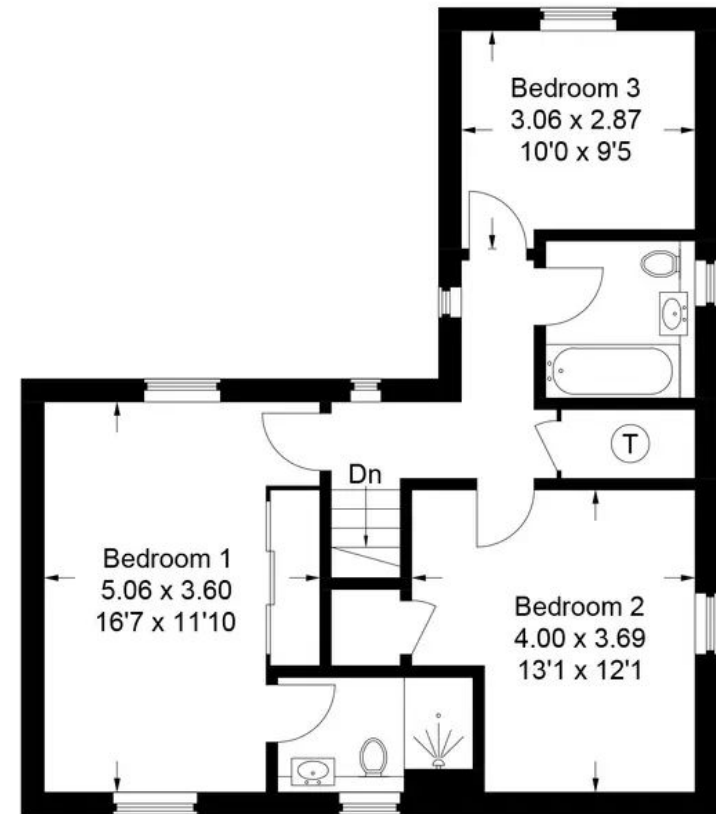
SCAN THE
QR CODE
FOR DETAILS



Approximate Gross Internal Area
Ground Floor = 58.6 sq m / 631 sq ft
First Floor = 58.1 sq m / 625 sq ft
Garage = 19.3 sq m / 208 sq ft
Total = 136.0 sq m / 1,464 sq ft



Ground Floor



First Floor

This plan is for layout guidance only. Not drawn to scale unless stated. Windows and door openings are approximate. Whilst every care is taken in the preparation of this plan, please check all dimensions, shapes and compass bearings before making any decisions reliant upon them.

2 Moley Gardens

Wantage, Wantage

A beautifully presented detached family home situated on the popular Regency Village development and sold with no onward chain.

Council Tax band: E

Tenure: Freehold

- No onward chain
- Sought after location
- South facing garden
- Single garage and parking
- Walking distance to Wantage town centre
- Built in 2015 by Croudace Homes



SCAN THE
QR CODE
TO BOOK
YOUR VIEWING



