



## 22 Ridgeway Close, East Hendred Wantage

Guide Price £680,000

**Simpsons**  
The Proactive Agent



SCAN THE  
QR CODE  
FOR DETAILS





# Ridgeway Close, OX12

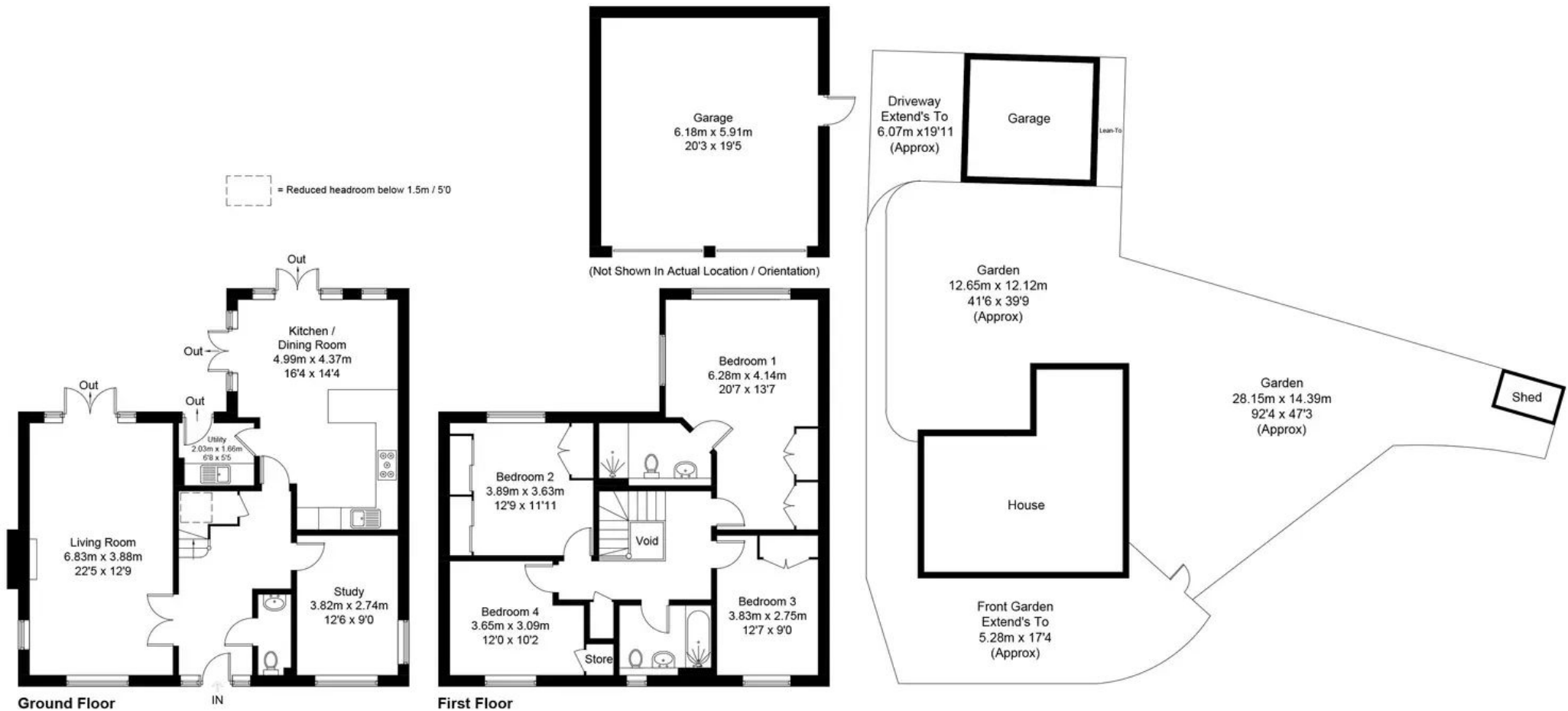
Approximate Gross Internal Area (Excluding Void) = 165.4 sq m / 1780 sq ft

Garage = 37.2 sq m / 400 sq ft

Total = 202.6 sq m / 2180 sq ft

Garden / Driveway Area = 506.3 sq m / 5450 sq ft

For identification only - Not to scale



Floor plan produced in accordance with RICS Property Measurement Standards.

© Mortimer Photography. Produced for Simpsons.

Unauthorised reproduction prohibited. (ID1055082)

# 22 Ridgeway Close

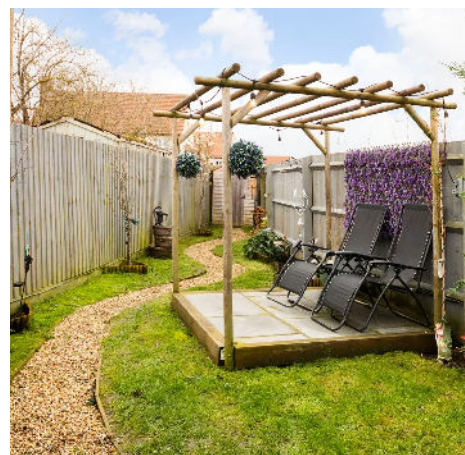
East Hendred, Wantage

A beautifully presented and spacious four bedroom home with rolling countryside views and situated perfectly at the edge of the development in a cul-de-sac.

Council Tax band: F

Tenure: Freehold

- Situated At The End Of A Cul-De-Sac
- Four Double Bedrooms
- Master With En-Suite Shower Room and Two Sets Of Wardrobes
- Harvey Water Softener
- Working Open Fire
- Bin And Bike Store
- Excellent Bus Service
- CIRCA 0.16 Acre Garden Facing South And West And Very Private



SCAN THE  
QR CODE  
TO BOOK  
YOUR VIEWING



