



**6a The Green, Drayton**

Abingdon

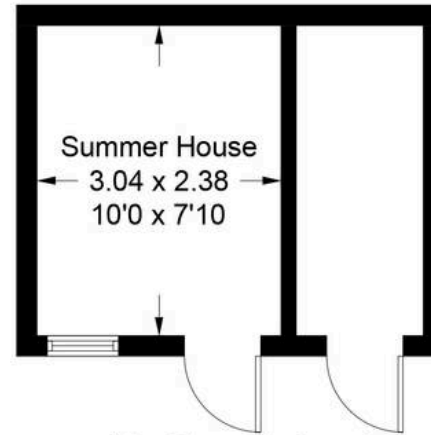
Guide Price **£395,000**

**Simpsons**


The Proactive Agent

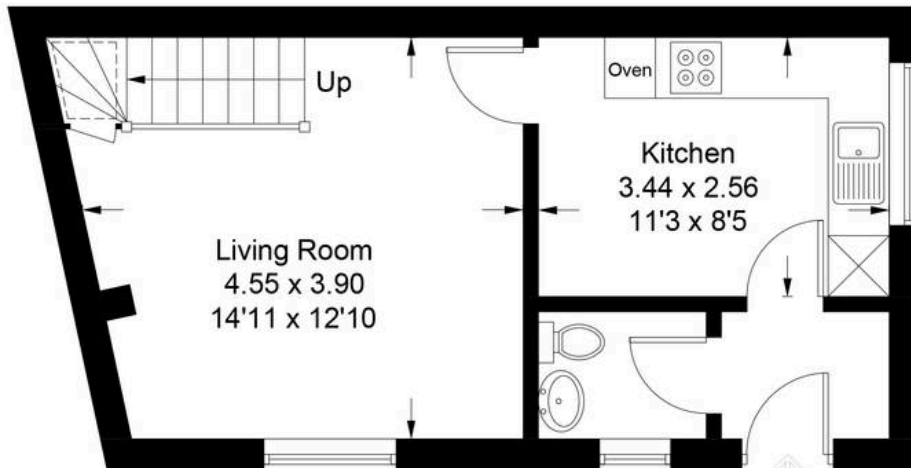
# The Green - Drayton

Approximate Gross Internal Area = 62.6 sq m / 674 sq ft  
Outbuildings = 11.1 sq m / 119 sq ft  
Total = 73.7 sq m / 793 sq ft

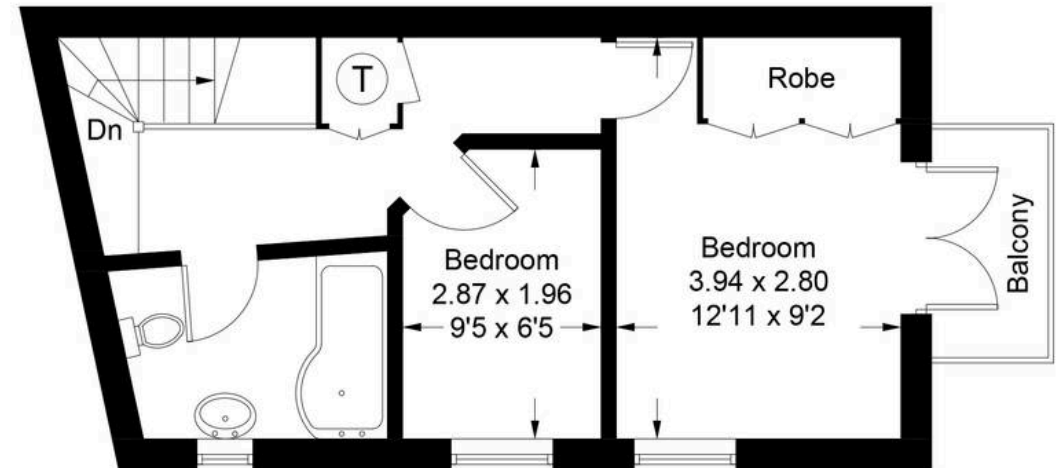


(Not Shown In Actual Location / Orientation)

 = Reduced headroom below 1.5m / 5'0



**Ground Floor**



**First Floor**

Illustration for identification purposes only, measurements are approximate, not to scale. Fourlabs.co © (ID1300761)

## 6a The Green

Drayton, Abingdon

An immaculately presented cottage in the heart of Drayton, which beautifully blends character charm with modern features.

Council Tax band: D

Tenure: Freehold

- Modern bespoke kitchen featuring top of the range Miele appliances.
- South westerly facing, split level garden with a sun trap patio area.
- Sympathetically modernised cottage retaining lots of original features.
- Located very close to nearby bus stops and local amenities.
- French doors from the master bedroom open out on to a unique balcony.
- Recently installed garden room which could be used for a multitude of purposes.



SCAN THE  
QR CODE  
**TO BOOK**  
YOUR VIEWING

