



23 Fuller Way, Steventon

Abingdon

Simpsons

The Proactive Agent

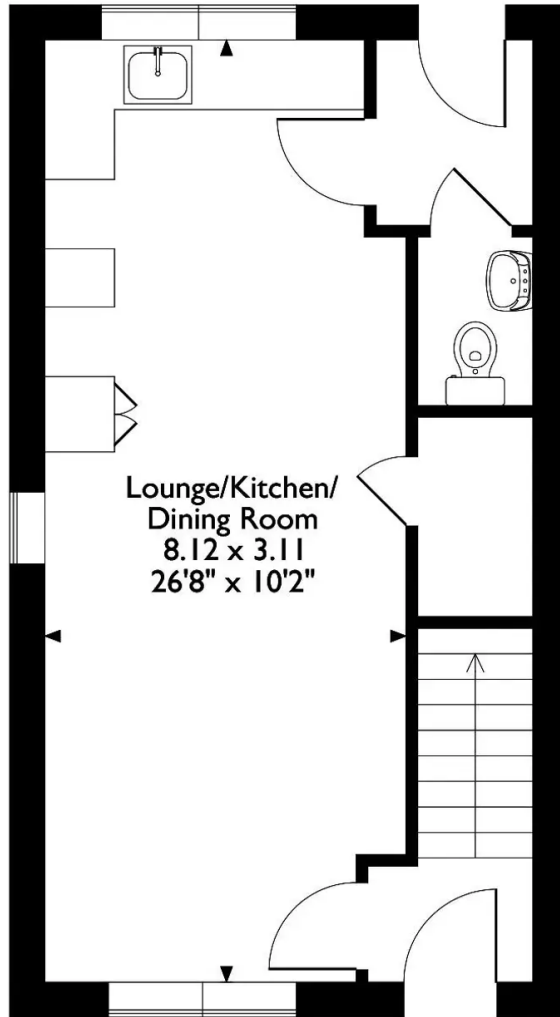
Guide Price **£325,000**



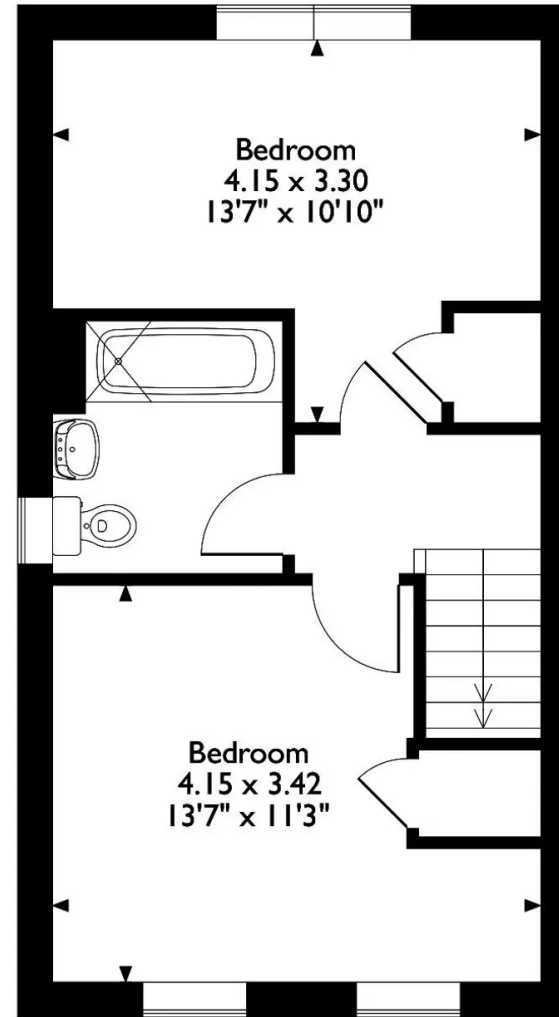
SCAN THE
QR CODE
FOR DETAILS



Approximate Gross Internal Area 68 Sq M/734 Sq Ft



Ground Floor



First Floor

Please note that the location of doors, windows and other items are approximate and this floorplan is to be used for illustrative purposes only. Unauthorized reproduction is prohibited.

23 Fuller Way

Steventon, Abingdon

A beautifully presented, two double bedroom home built by David Wilson Homes.

Council Tax band: D

Tenure: Freehold

- Driveway parking for two cars.
- Downstairs WC.
- Gas central heating.
- Modern open plan ground floor layout.
- South facing rear garden.
- 2015 Built David Wilson Home.
- Annual development maintenance charge of £178.



SCAN THE
QR CODE
TO BOOK
YOUR VIEWING



