



23 Fuller Way, Steventon

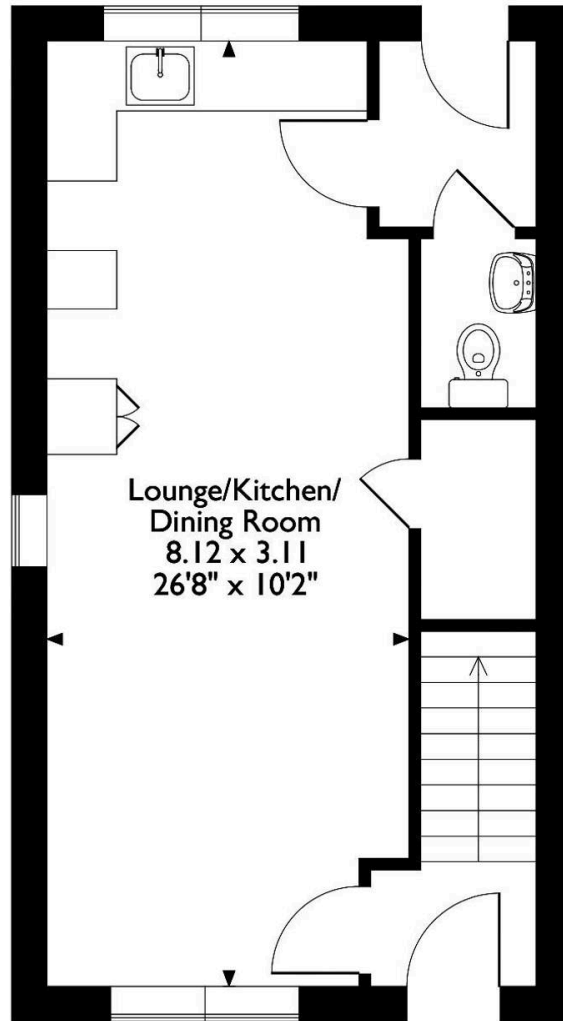
Abingdon

Simpsons

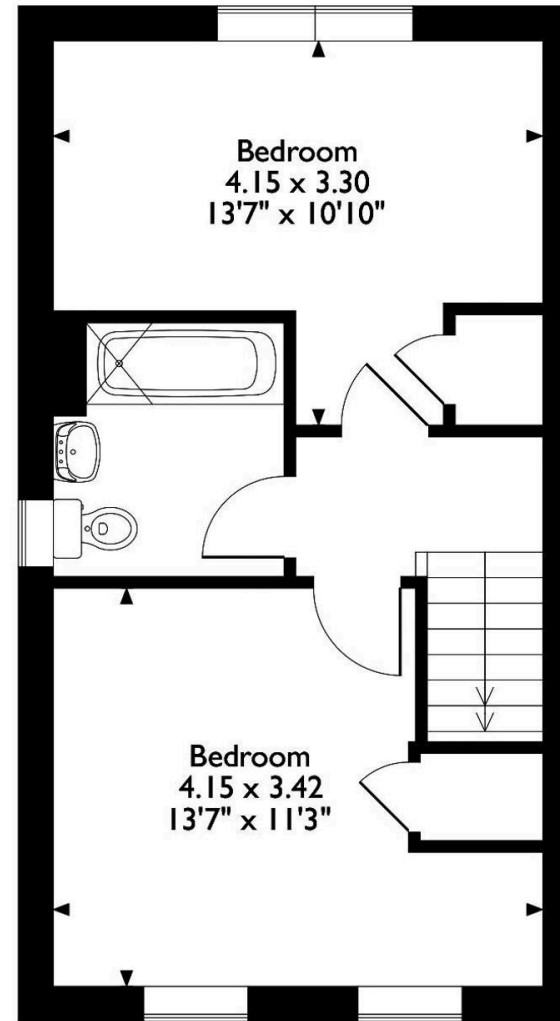
The Proactive Agent

Guide Price **£335,000**

Approximate Gross Internal Area 68 Sq M/734 Sq Ft



Ground Floor



First Floor

Please note that the location of doors, windows and other items are approximate and this floorplan is to be used for illustrative purposes only. Unauthorized reproduction is prohibited.

23 Fuller Way

Steventon, Abingdon

A beautifully presented, two double bedroom, semi-detached home built by David Wilson Homes in the highly desirable village of Steventon.

Council Tax band: D

Tenure: Freehold

- Driveway parking for two cars.
- Useful downstairs WC.
- Gas central heating.
- Modern open plan ground floor layout.
- South facing, private, enclosed rear garden.
- Built in 2015 by David Wilson Homes.
- Annual development maintenance charge of £178.

