



108 Abingdon Road, Drayton

Abingdon

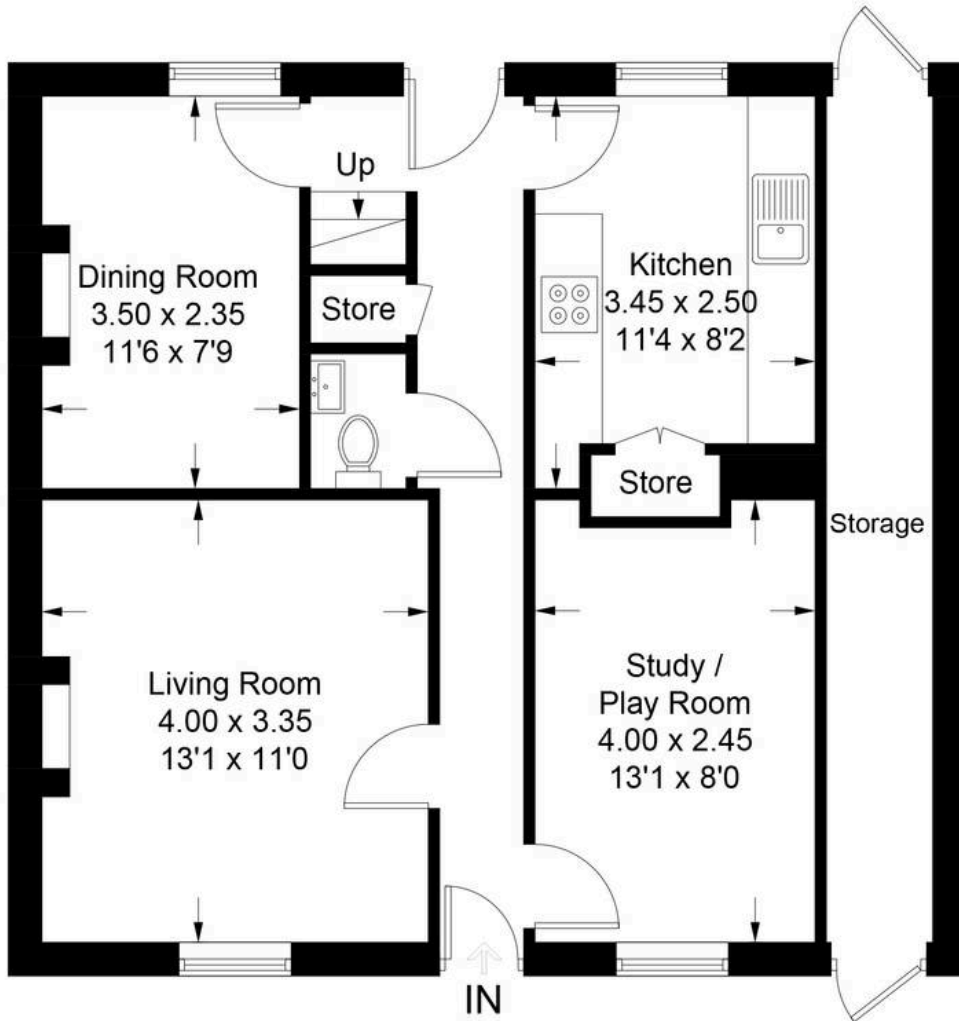
£450,000

Simpsons

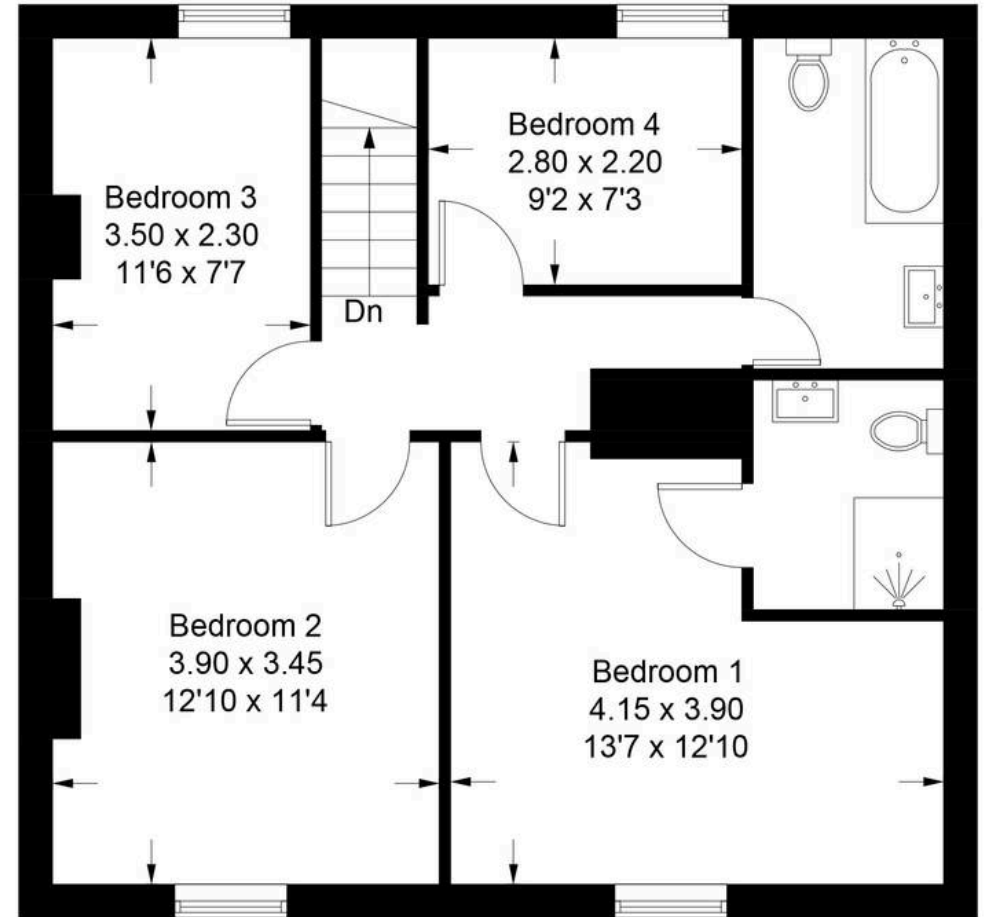
The Proactive Agent

Abingdon Road - Drayton

Approximate Gross Internal Area = 120.0 sq m / 1292 sq ft



Ground Floor



First Floor

108 Abingdon Road

Drayton, Abingdon

Council Tax band: C

Tenure: Freehold

- Offered to the market with no onward chain is this recently renovated four bedroom home with off street parking.
- Recently renovated four-bedroom terraced home offered for sale with no onward chain, making it an excellent option for buyers looking for a straightforward and hassle-free move.
- The contemporary shaker-style kitchen has been thoughtfully designed with quality cabinetry, generous worktop space and a functional layout, providing an ideal setting for everyday cooking.
- The ground floor offers three spacious and adaptable reception rooms, giving buyers the flexibility to create separate living, dining, working or play areas to suit their individual lifestyle.
- Positioned in the desirable village of Drayton, the property enjoys easy access to a range of local amenities, including convenience stores, hardware shop, a restaurant and a traditional village pub.
- To the rear of the property, a private driveway provides convenient off-road parking, adding valuable practicality for households with one or more vehicles



SCAN THE
QR CODE
TO BOOK
YOUR VIEWING

