



19 Gregory Place, Witney

Guide Price £189,000



19 Gregory Place

Witney, Witney

Offered to market at a 60% share is this fabulous two-bedroom end of terrace home located on the popular Windrush development within walking distance of all local amenities.

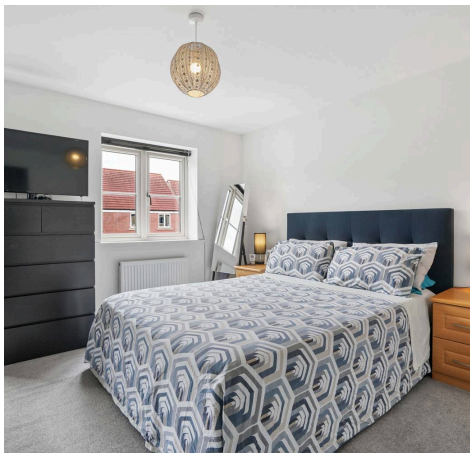
Council Tax band: C

Tenure: Leasehold

EPC Energy Efficiency Rating: B

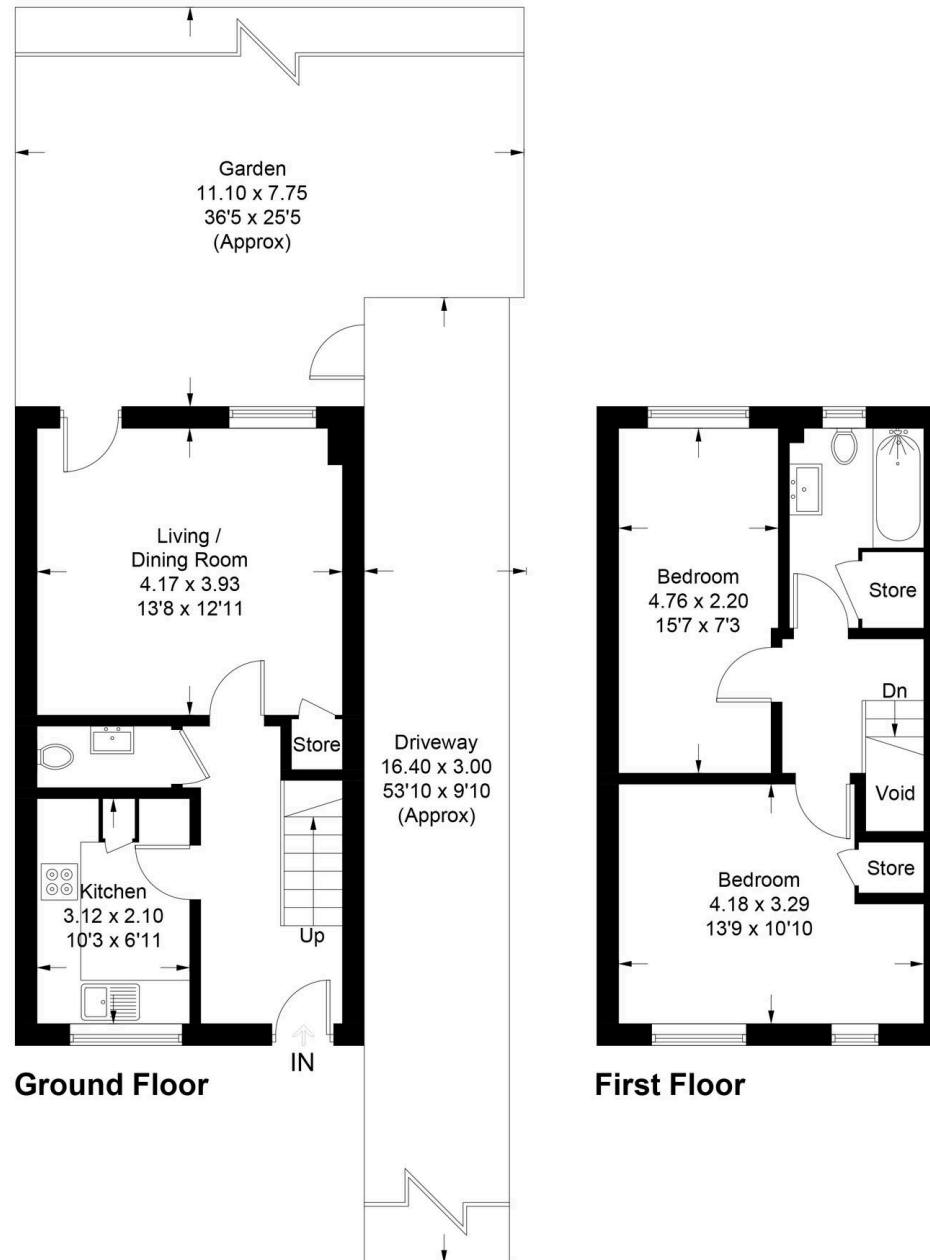
EPC Environmental Impact Rating: B

- Offered for sale at a 60% share.
- A beautifully presented two-bedroom end of terrace home located on the popular Windrush development.
- Two spacious double bedrooms.
- Fitted kitchen and separate sitting/dining room with door leading out to the rear garden.
- Driveway parking for up to three cars.
- Low maintenance rear garden with shed.



Gregory Place - Witney

Approximate Gross Internal Area = 69.1 sq m / 744 sq ft



Ground Floor

First Floor



Simpsons Witney Branch

4 Langdale Court Witney, Oxfordshire - OX28 6AD

01993 835030 • witney@simpsonsproperty.com • www.simpsonsproperty.com/