



## Flat 3, Shirley Heights, 24 Farmhouse Meadow

Offers Over £180,000



## Flat 3

Brought to market with no onward chain is this well-appointed two-bedroom ground floor apartment located in the popular Burwell area of Witney.

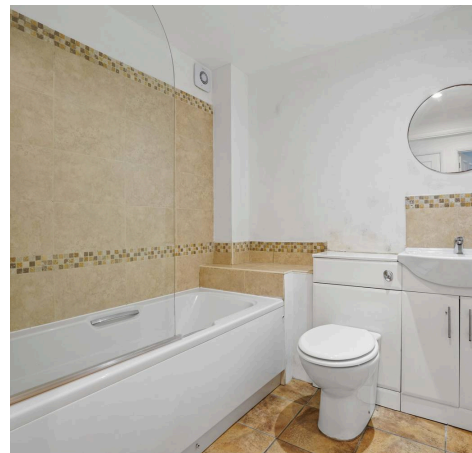
Council Tax band: B

Tenure: Leasehold

EPC Energy Efficiency Rating: D

EPC Environmental Impact Rating: C

- Brought to market with no onward chain.
- Open plan kitchen/dining/living room with french doors leading out to the garden.
- Two bedrooms - one double and one single.
- Bathroom with bath and shower over.
- Allocated parking space.
- Communal garden.



# Shirley Heights - Witney

Approximate Gross Internal Area = 52.9 sq m / 569 sq ft

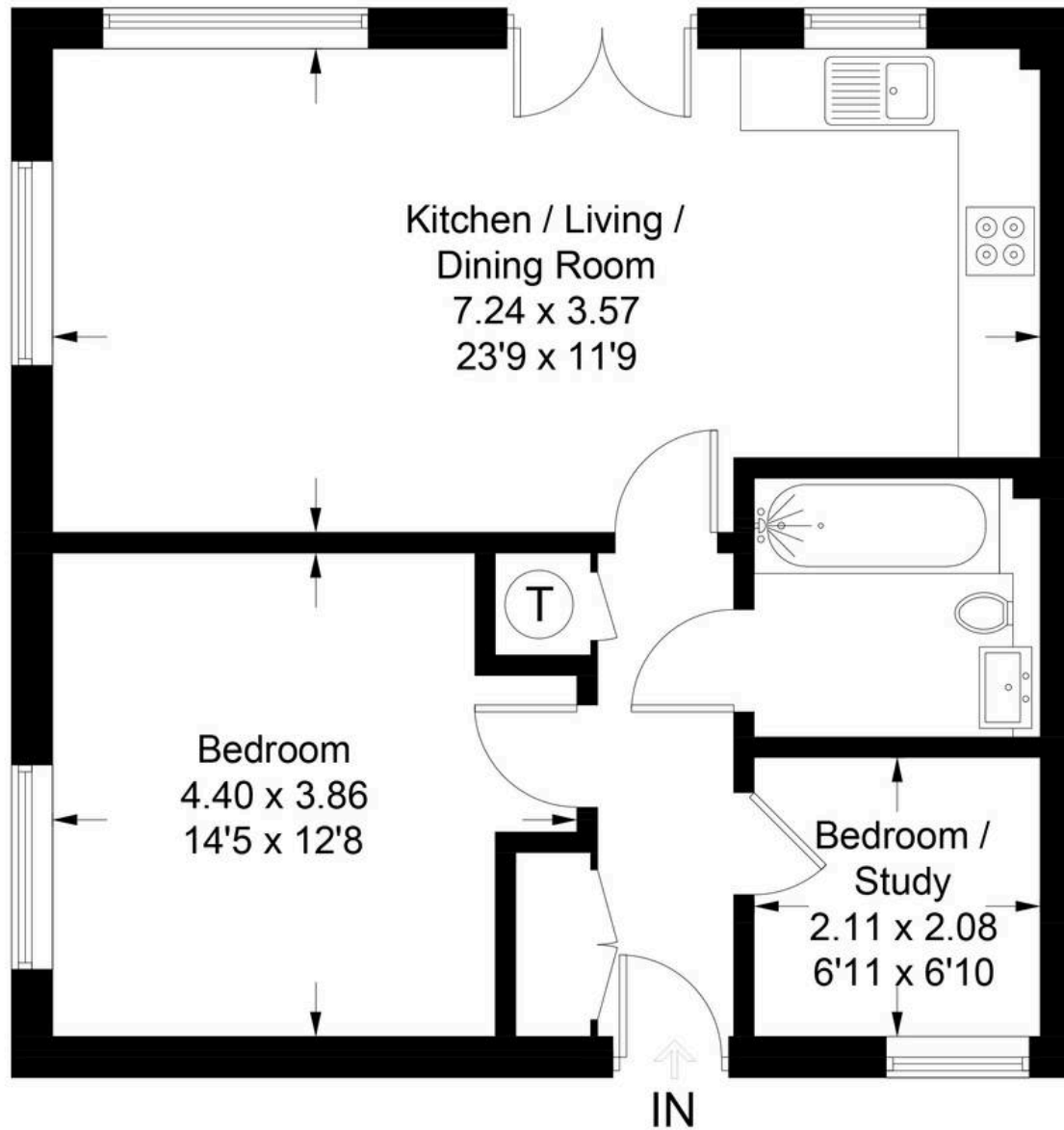


Illustration for identification purposes only, measurements are approximate, not to scale. Fourlabs.co © (ID1297552)



## Simpsons Witney Branch

4 Langdale Court Witney, Oxfordshire - OX28 6AD

01993 835030 • [witney@simpsonsproperty.com](mailto:witney@simpsonsproperty.com) • [www.simpsonsproperty.com/](http://www.simpsonsproperty.com/)