



30 High Street, Long Wittenham

Abingdon

Guide Price **£595,000**

Simpsons
The Proactive Agent

High Street - Long Wittenham

Approximate Gross Internal Area = 116.2 sq m / 1251 sq ft

Outbuildings = 79.0 sq m / 850 sq ft

Total = 195.2 sq m / 2101 sq ft

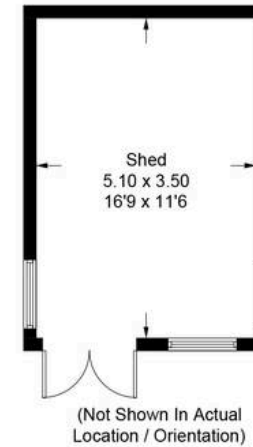
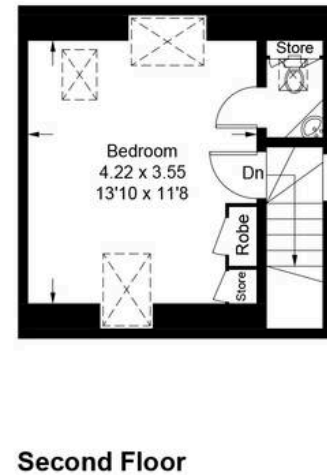
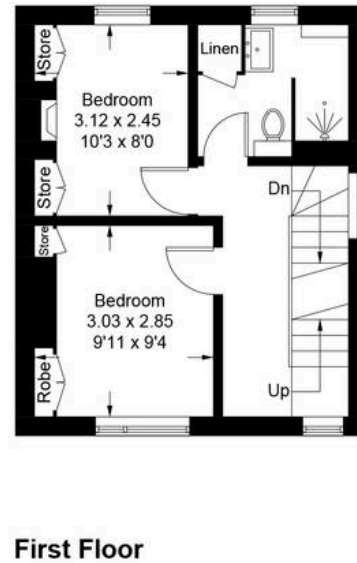
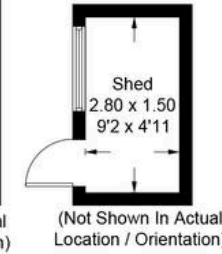
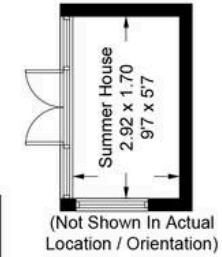
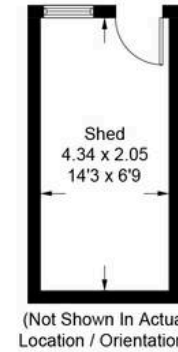
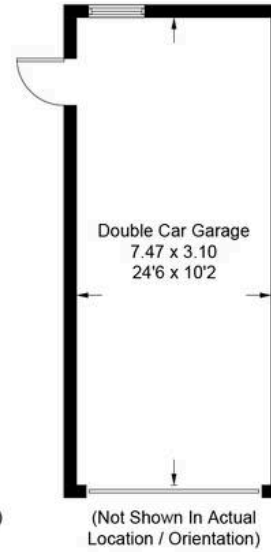
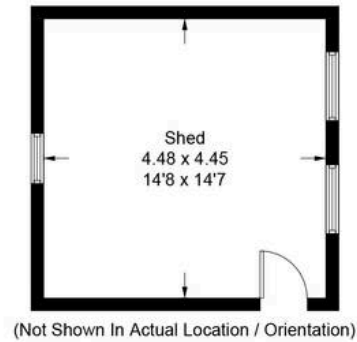
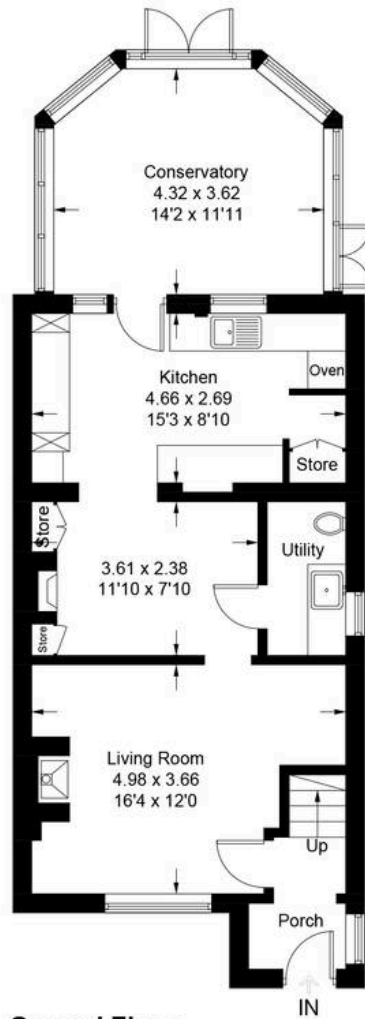


Illustration for identification purposes only, measurements are approximate, not to scale. Fourlabs.co © (ID1294147)

30 High Street

Long Wittenham, Abingdon

A quintessential three bedroom village property in delightful Long Wittenham, tastefully blending characterful cottage living with modern decoration. Council Tax band: D

Tenure: Freehold

- Sizeable rear garden, measuring over 100ft in length with patio area, outbuildings and established borders
- Significantly extended with a large conservatory, front porch and loft conversion
- Double length garage and driveway parking
- Envious location in the heart of this picturesque village, located equidistant between the towns of Abingdon, Didcot and Wallingford
- Modern fully tiled family bathroom with a double shower
- Welcoming lounge with exposed brick fireplace with a woodburning stove



SCAN THE
QR CODE
TO BOOK
YOUR VIEWING

