



## 15 Nuneham Square, Abingdon

Abingdon

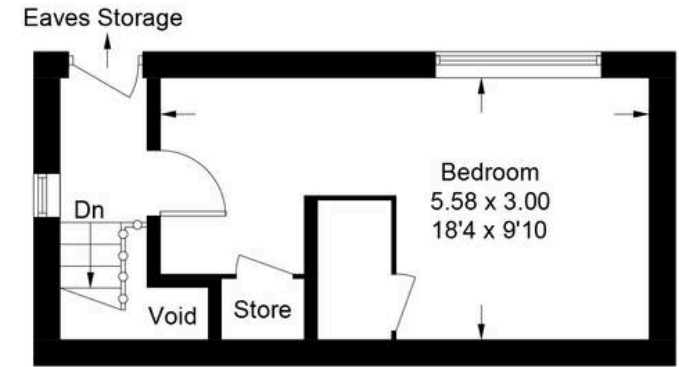
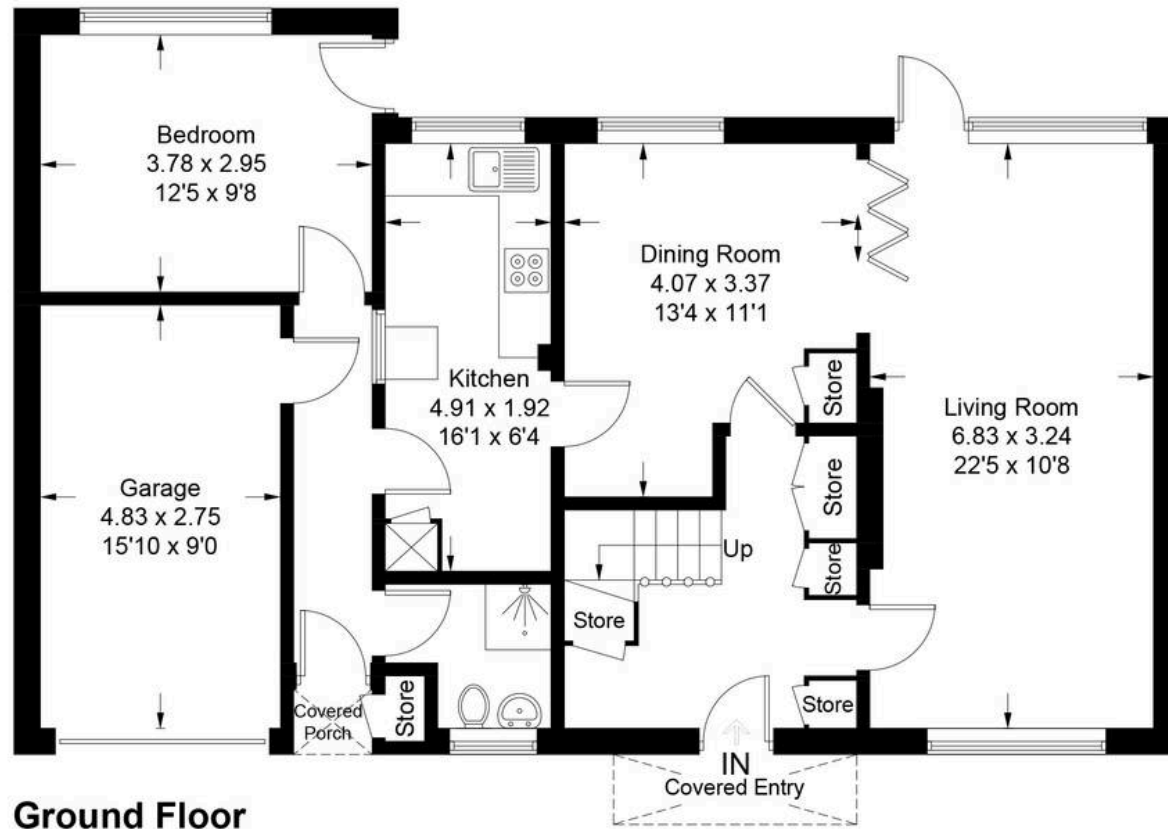
Guide Price **£550,000**

**Simpsons**

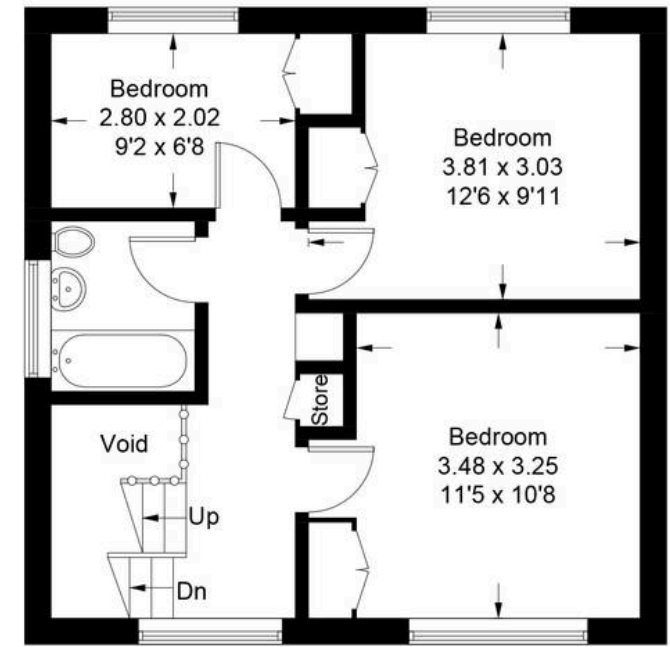
The Proactive Agent

# Nuneham Square - Abingdon

Approximate Gross Internal Area = 150.5 sq m / 1620 sq ft  
(Including Garage / Excluding Void & External Store)



**Second Floor**



**First Floor**

Illustration for identification purposes only, measurements are approximate,  
not to scale. Fourlabs.co © (ID1294432)

# 15 Nuneham Square

Abingdon, Abingdon

A rare opportunity to purchase a significantly extended 4/5 bedroom 'Harwell' property on Nuneham Square, a unique location consisting of less than twenty properties overlooking a pretty green.

Council Tax band: D

Tenure: Freehold

- Property being sold with the certainty of No Onward Chain
- Envious location overlooking a Green and only a short walk from Abingdon Town Centre
- Versatile accommodation with the option of a fifth bedroom on the ground floor
- Property would benefit from cosmetic updating and has an abundance of development potential
- Large, established, private rear garden, laid to lawn with patio area
- Full length lounge with direct access to the rear garden



SCAN THE  
QR CODE  
**TO BOOK**  
YOUR VIEWING



