



14 Scantlebury Way, Wantage

Wantage

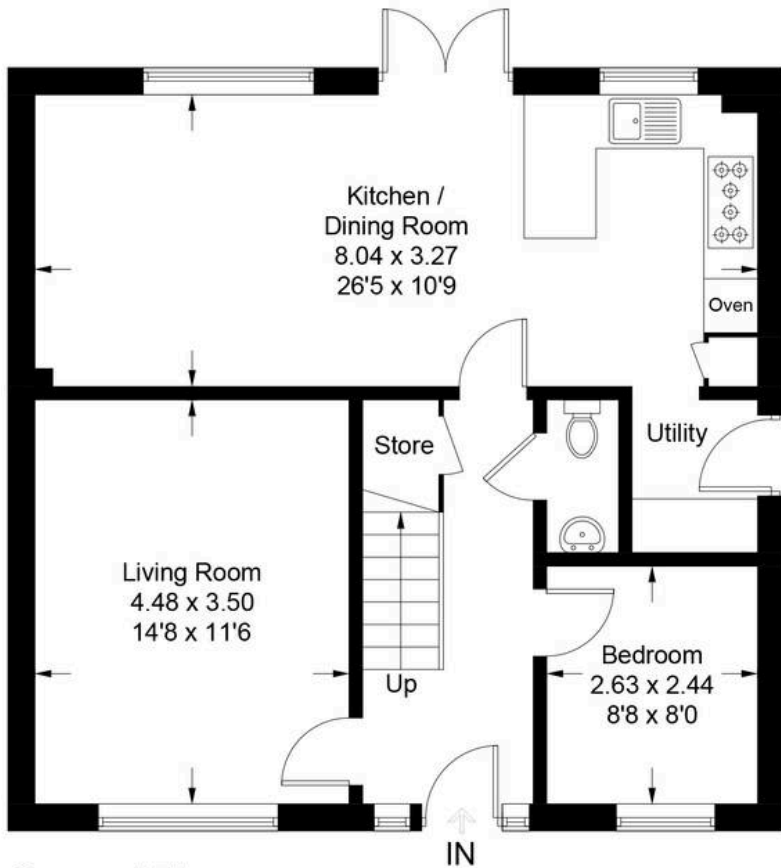
Simpsons

The Proactive Agent

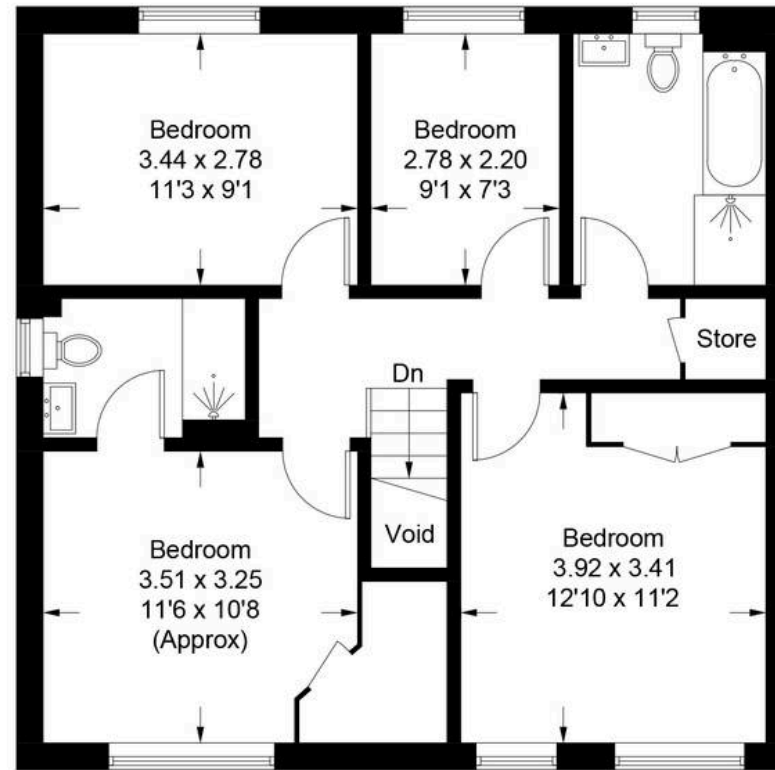
Guide Price **£575,000**

Scantlebury Way - Wantage

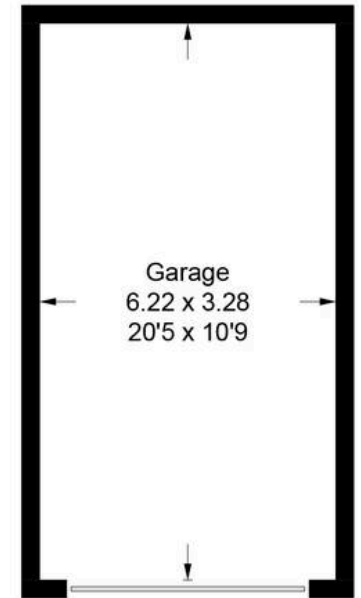
Approximate Gross Internal Area = 127.7 sq m / 1374 sq ft
Garage = 20.5 sq m / 221 sq ft
Total = 148.2 sq m / 1595 sq ft
(Including Void)



Ground Floor



First Floor



(Not Shown In Actual Location / Orientation)

14 Scantlebury Way

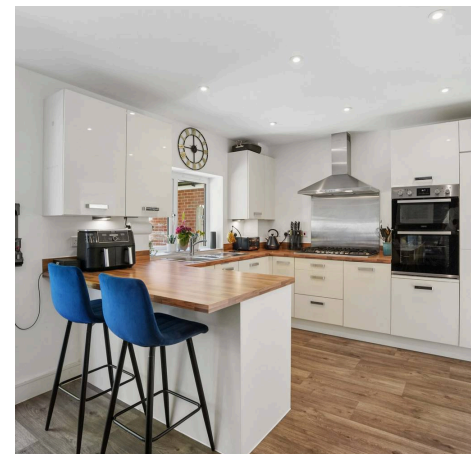
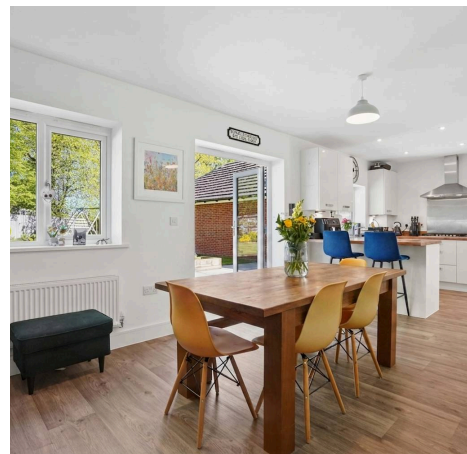
Wantage, Wantage

This impressive four bedroom detached house is presented in excellent condition throughout and offers versatile living space ideal for families.

Council Tax band: F

Tenure: Freehold

- Excellent Condition Throughout with a Second Reception Room Currently Used as the Office
- Beautiful & Private Rear Garden Which is Mainly Laid to Lawn
- Walking Distance to Good Schools, Parks & Shops
- Four Spacious Bedrooms & Master Includes En-Suite



SCAN THE
QR CODE
TO BOOK
YOUR VIEWING



