



7 Victoria Road, ABINGDON

Abingdon

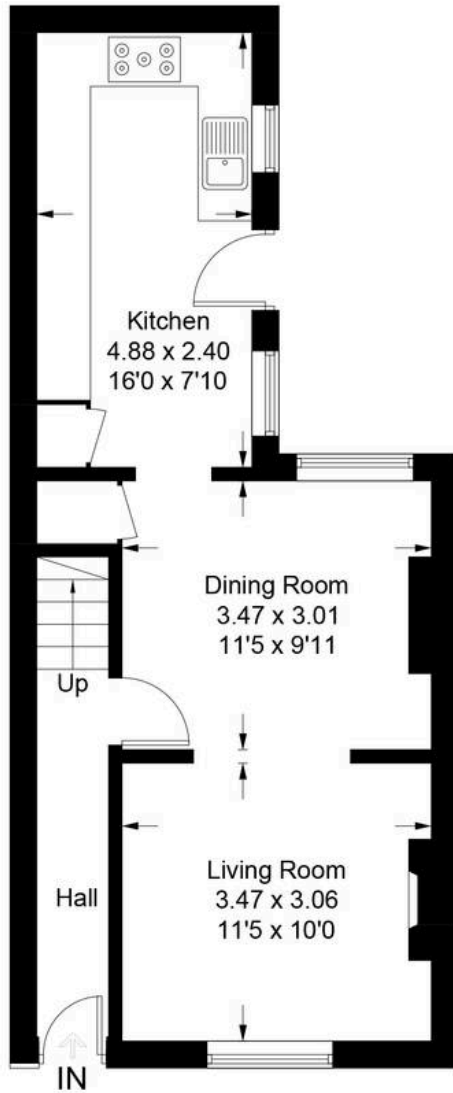
Guide Price **£435,000**

Simpsons

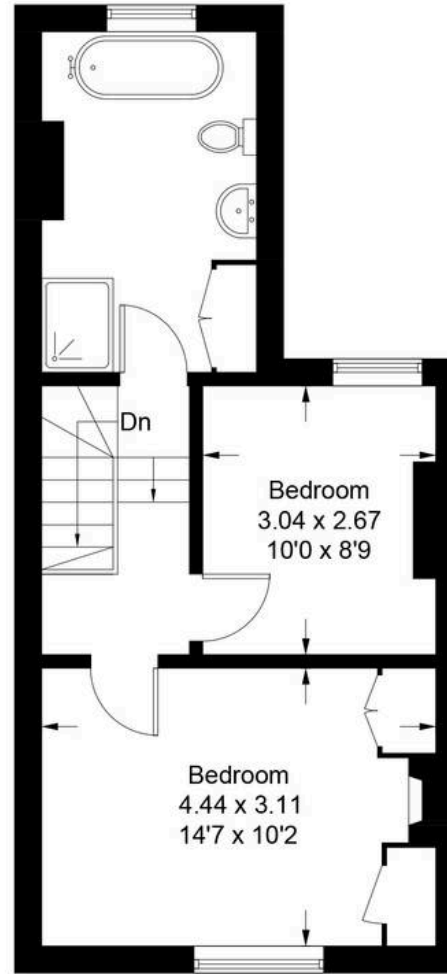
The Proactive Agent

Victoria Road - Abingdon

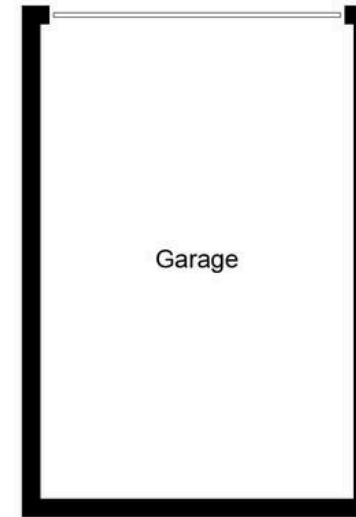
Approximate Gross Internal Area = 75.3 sq m / 810 sq ft
(Excluding Garage)



Ground Floor



First Floor



(Not Shown In Actual
Location / Orientation)

Illustration for identification purposes only, measurements are approximate,
not to scale. Fourlabs.co © (ID1298440)

7 Victoria Road

ABINGDON, Abingdon

A late Victorian town house, set in the picturesque Albert Park conservation area, with attractive external architecture and a modern yet 'in keeping' interior.

Council Tax band: TBD

Tenure: Freehold

- Solid Wood Sash Windows
- Set within the Albert Park conservation area
- Modern, fully re-fitted kitchen
- Gas Central Heating
- Late Victorian Town House With Pretty Architecture
- Garage and driveway parking to the rear and on street parking to the front
- Carswell School Catchment Area
- Well Presented Modern four piece bathroom with separate shower cubicle

