



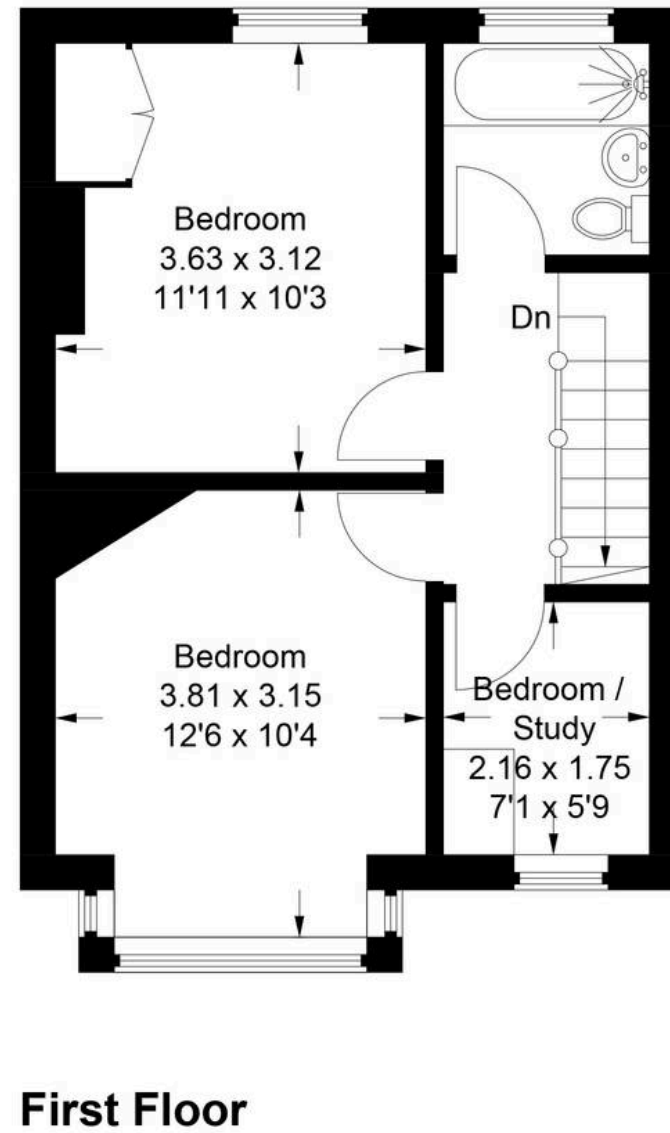
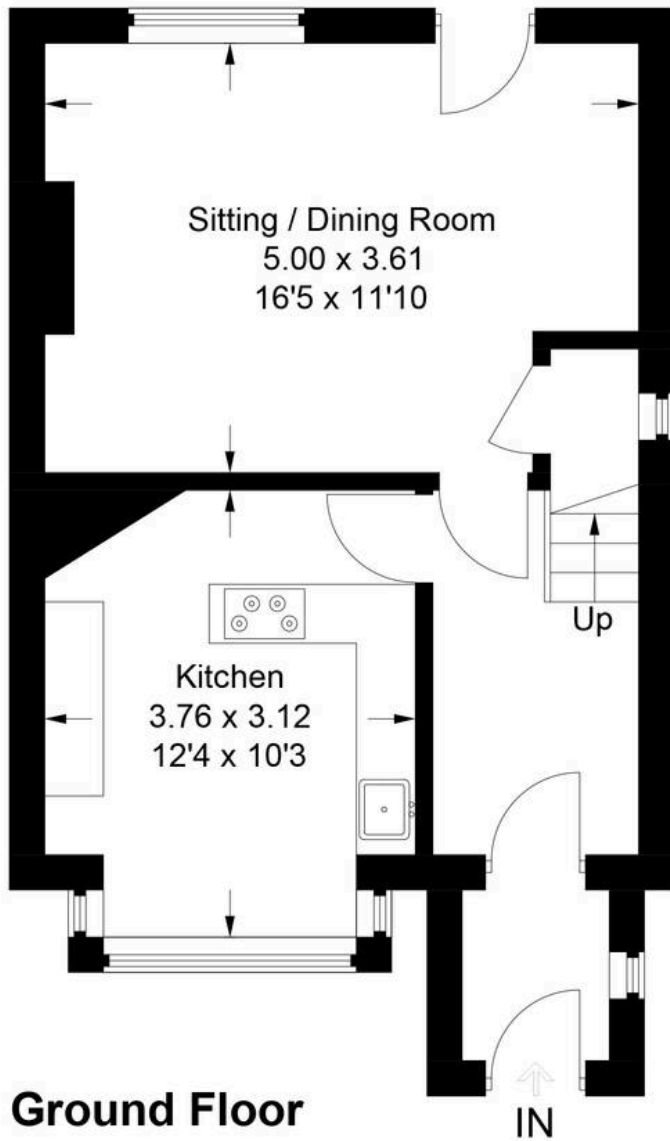
# 134 Whitecross, Abingdon

Abingdon

Guide Price **£425,000**

**Simpsons**  
The Proactive Agent

Approximate Gross Internal Area  
Ground Floor = 38.8 sq m / 418 sq ft  
First Floor = 36.3 sq m / 391 sq ft  
Total = 75.1 sq m / 809 sq ft



This plan is for layout guidance only. Not drawn to scale unless stated. Windows and door openings are approximate. Whilst every care is taken in the preparation of this plan, please check all dimensions, shapes and compass bearings before making any decisions reliant upon them.

# 134 Whitecross

Abingdon, Abingdon

A well kept family home benefiting from a lovely, much larger than average rear garden. The property is offered for sale with no onward chain.

Council Tax band: D

Tenure: Freehold

- For sale with the guarantee of no onward chain, a 1930's built home offered for sale in excellent condition with the benefit from a modern kitchen and bathroom.
  - The property benefits from a rear garden over 100ft in length, and backs onto open fields with pretty countryside views.
  - Located equidistant from Abingdon and the village of Wootton, with bus routes serving both locations as well as Oxford City.
  - Extended front porch, creating space for coat handing and shoe space with access to an inner hallway giving access to all ground floor rooms and the first floor landing.
  - Well maintained gas central heating, open fire place (currently capped off) in the rear aspect sitting room.
  - Driveway parking for two cars with pedestrian side access to the rear garden.
  - Well kept flooring and carpets throughout.
  - Extensive rear garden mainly laid to lawn with two
- ne  
eff  
hed.  
nt  
eir as additional  
insulation since the EPC was commissioned.



SCAN THE  
QR CODE  
TO BOOK  
YOUR VIEWING

