



45 Sadlers Court, Abingdon

Abingdon

Guide Price **£220,000**

Simpsons

The Proactive Agent

Sadlers Court - Abingdon

Approximate Gross Internal Area (Excluding Garage)
61.5 sq m / 662 sq ft

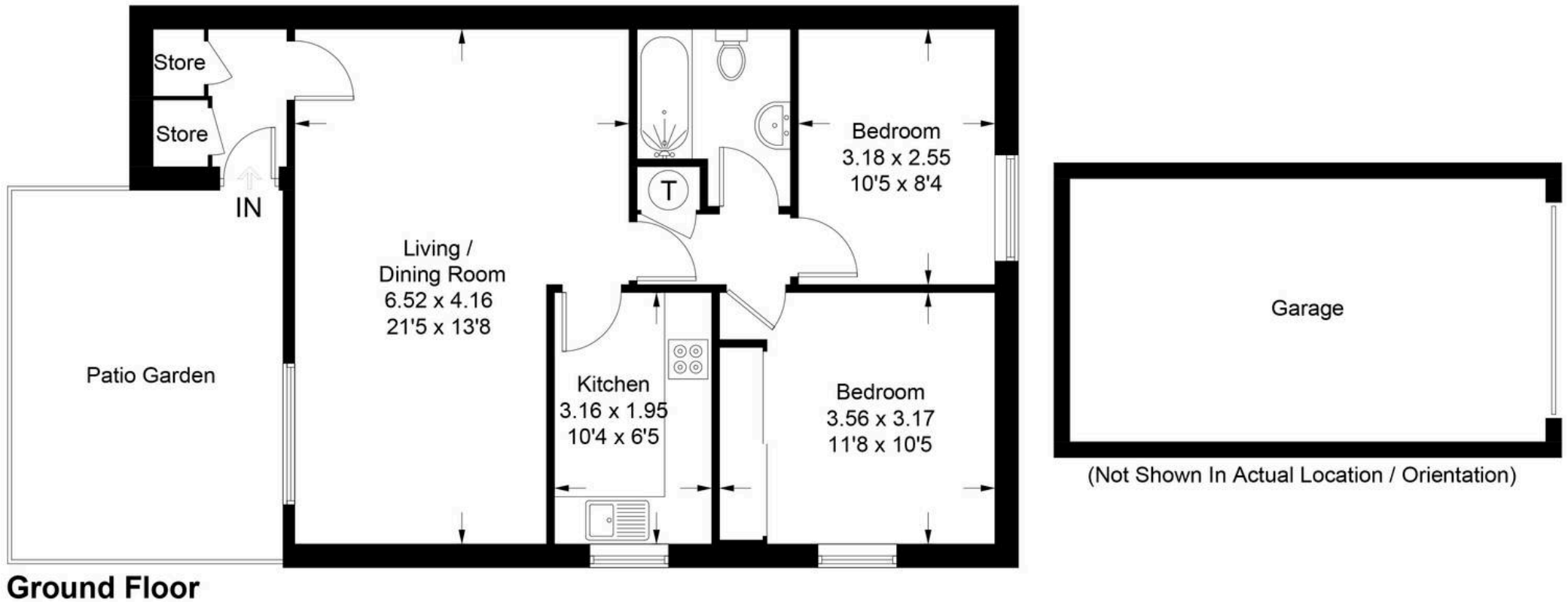


Illustration for identification purposes only, measurements are approximate, not to scale. Fourlabs.co © (ID1296627)

45 Sadlers Court

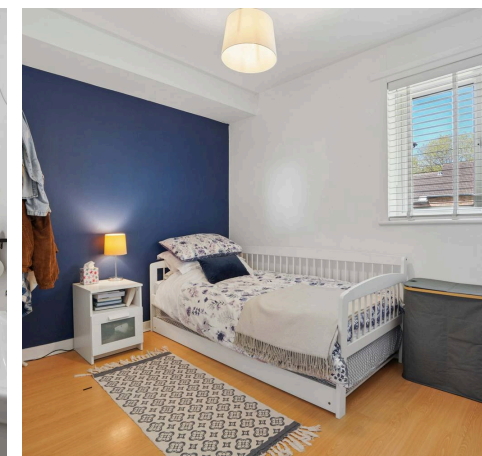
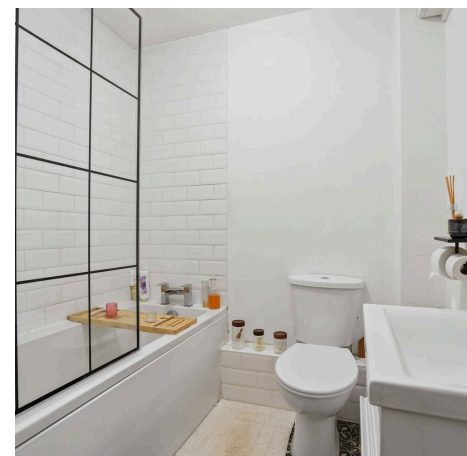
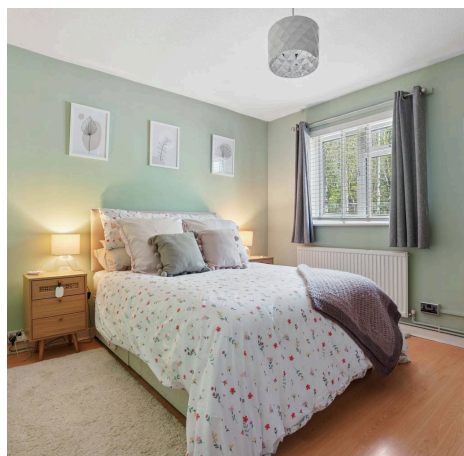
Abingdon, Abingdon

A deceptively spacious two double bedroom, ground floor apartment in this popular North Abingdon location.

Council Tax band: C

Tenure: Leasehold

- Property benefits from an enclosed, private courtyard garden
- Useful garage in nearby block with parking space in front
- Modern bathroom suite with full tiling around the bath
- North Abingdon location perfect for transport links
- Gas central heating and UPVC double glazing.
- 87 year leasehold term, Ground Rent £373 per year and Maintenance Fee £280 per year



SCAN THE
QR CODE
TO BOOK
YOUR VIEWING



