



Simpsons House, Abingdon
The Proactive Agent

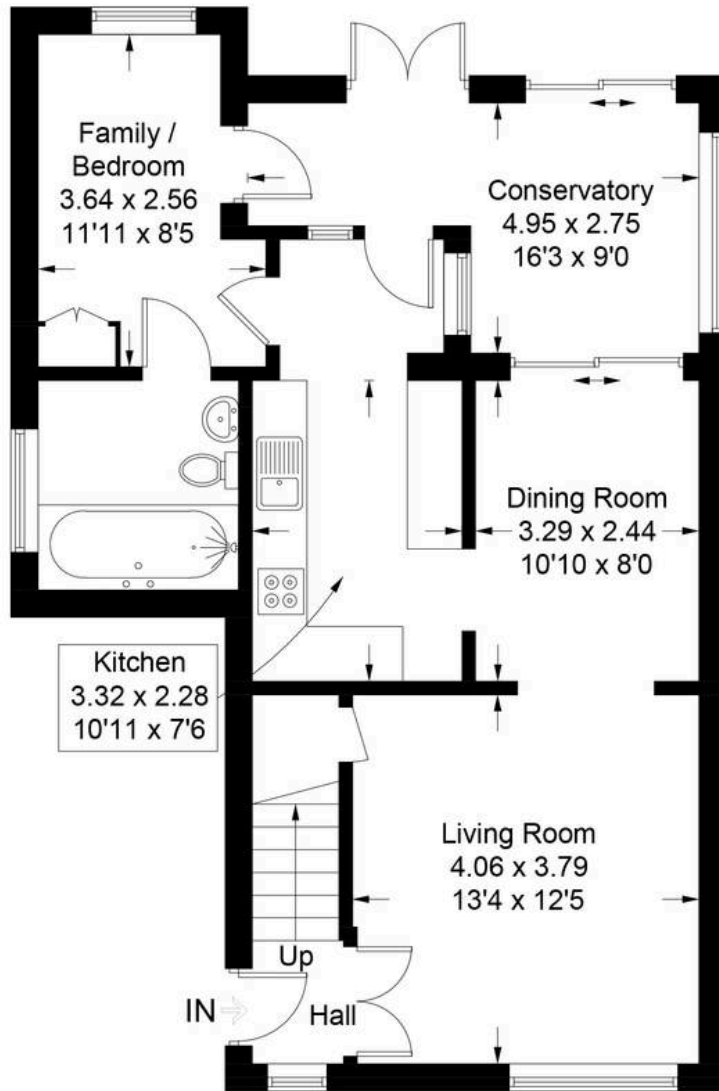
In Excess of **£450,000**

Trinity Close - Abingdon

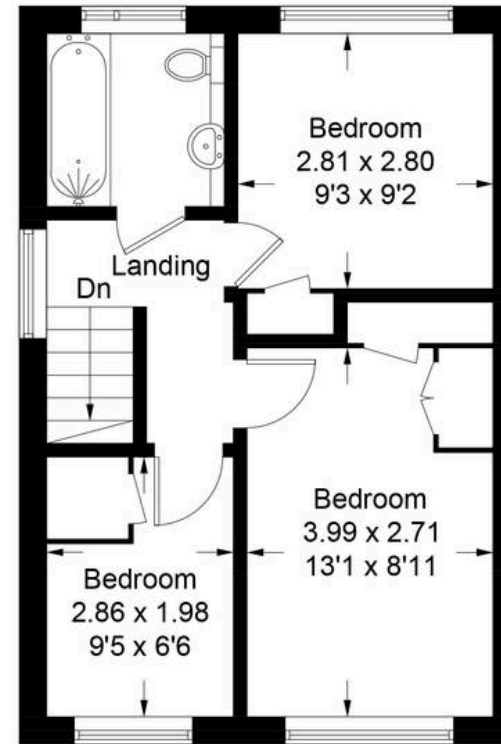
Approximate Gross Internal Area = 103.1 sq m / 1110 sq ft

Garage = 14.8 sq m / 159 sq ft

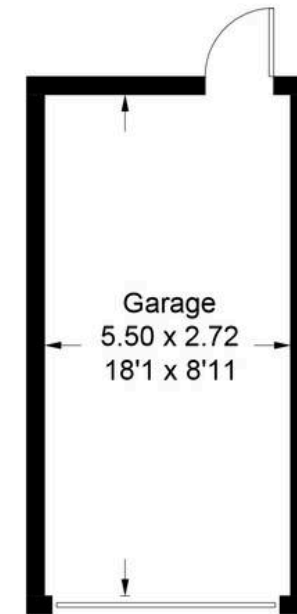
Total = 117.9 sq m / 1269 sq ft



Ground Floor



First Floor



(Not Shown In Actual Location / Orientation)

Illustration for identification purposes only, measurements are approximate, not to scale. Fourlabs.co © (ID1295020)

1 Trinity Close

Abingdon, Abingdon

Located in North Abingdon on the popular Peachcroft development, this extended family home is offered for sale in superb condition with the benefit of a ground floor guest bedroom with en-suite.

Council Tax band: D

Tenure: Freehold

- An extended family home, offering four bedrooms, one being a ground floor guest bedroom with en-suite, ideal for a multi generation family with elderly relatives.
- Further extended ground floor accommodation incorporating a further reception room, ideal for use as a separate dining or family room.
- Superbly presented, rear aspect, modern kitchen with quartz worktops and fully tiled bath/shower room suite both with under floor heating
- Fully enclosed, private garden laid to lawn with a patio area. Separate detached garage with light and power.
- Walking distance to Peachcroft Shopping Centre, catchment for Rush Common Primary School. Nearby bus routes serving the town centre and nearby Oxford City.
- Professionally laid, resin driveway parking for three cars



SCAN THE
QR CODE
TO BOOK
YOUR VIEWING

