



**29 Fairfield Close, Grove**

Wantage

Guide Price **£349,950**

**Simpsons**

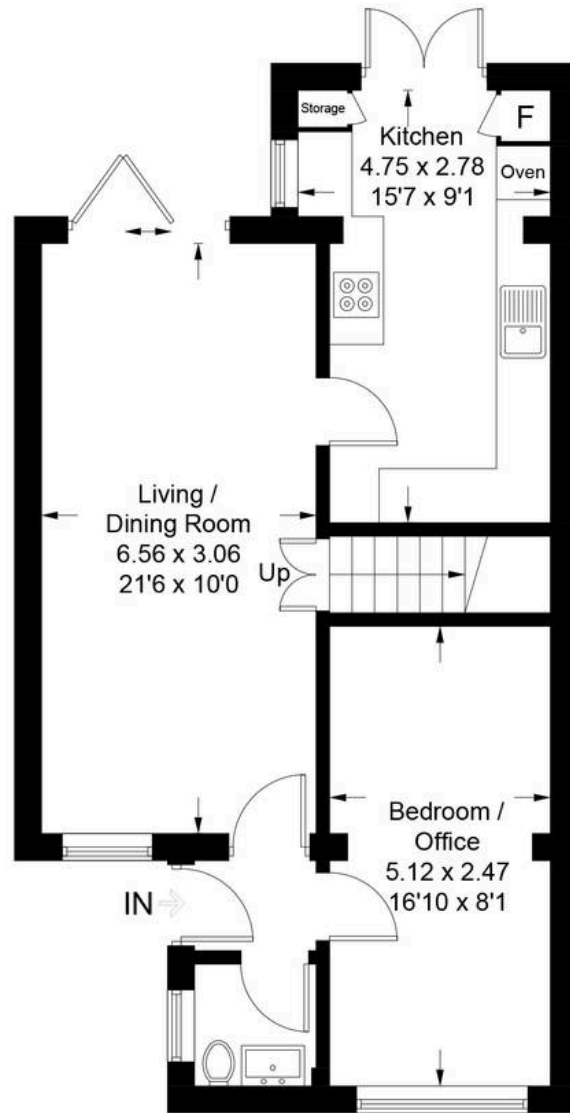
The Proactive Agent

# Fairfield Close - Grove

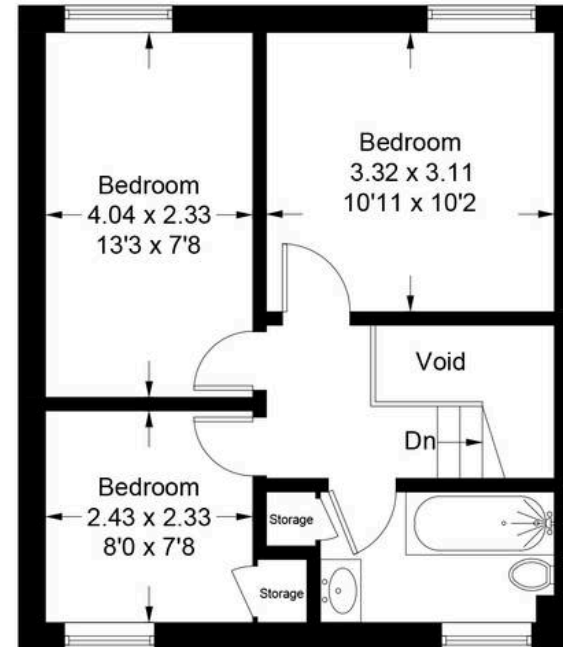
Approximate Gross Internal Area = 87.7 sq m / 944 sq ft  
(Excluding Void)

Garden Studio = 6.5 sq m / 70 sq ft

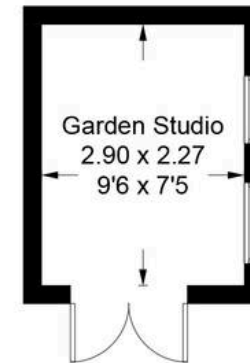
Total = 94.2 sq m / 1014 sq ft



Ground Floor



First Floor



(Not Shown In Actual Location / Orientation)

# 29 Fairfield Close

Grove, Wantage

Welcome to this stunning three bedroom semi detached house, which has been thoughtfully extended and is immaculately presented throughout.

Council Tax band: C

Tenure: Freehold

- Extended & Immaculately Presented Throughout With A Newly Fitted High Spec Kitchen
- Bi-Fold Doors From The Living Room Out To The Secluded & Beautifully Landscaped Garden
- Garage Conversion For Extra Reception Space Or A Fourth Bedroom
- Driveway Parking For Multiple Cars As Well As On-Street Parking
- Modern Fixtures & Fittings Throughout
- Three/ Four Bedroom Semi-Detached Home



SCAN THE  
QR CODE  
TO BOOK  
YOUR VIEWING

