



Flat A, Abbey View House, 11 Stert Street

Abingdon

Guide Price **£200,000**

Simpsons
The Proactive Agent

Stert Street - Abingdon

Approximate Gross Internal Area = 45.2 sq m / 487 sq ft

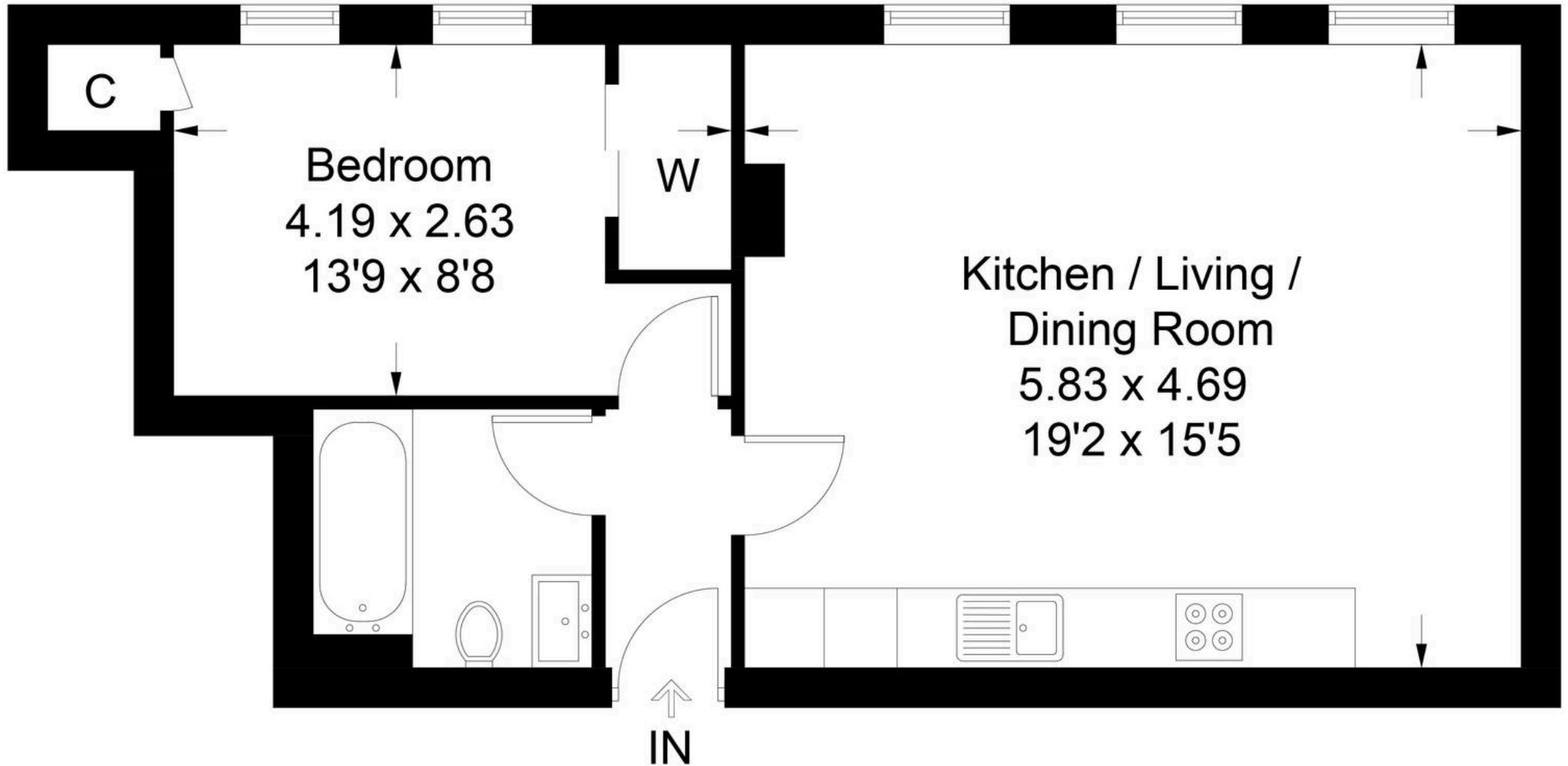


Illustration for identification purposes only, measurements are approximate, not to scale. Fourlabs.co © (ID1298448)

Flat A

Abbey View House, Abingdon

A modern, spacious purpose built one bedroom apartment in the heart of Abingdon town centre. Council Tax band: B

Tenure: Leasehold

- Central location which is just a short walk to bus stops.
- Property being sold with the certainty of no onward chain.
- Nearby parking available in car parks which require a permit available from the VWHDC.
- Secure property entrance with entry phone security.
- Tasteful modern decoration throughout.
- Annual service charge £1711 in the latest billing cycle with 112 years left on the lease.



SCAN THE
QR CODE
TO BOOK
YOUR VIEWING

