



118 Manor Road, Witney

Guide Price **£280,000**



118 Manor Road

Brought to market with no onward chain is this two-bedroom terraced home located on the popular Cogges development.

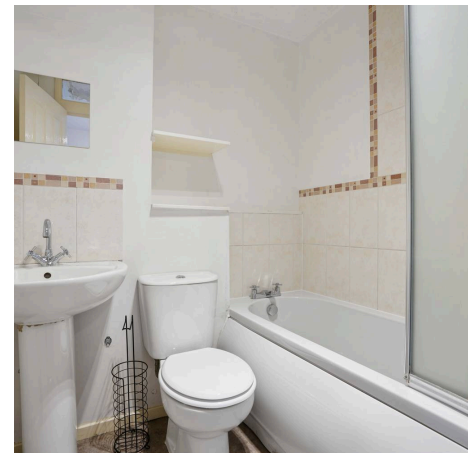
Council Tax band: TBD

Tenure: Freehold

EPC Energy Efficiency Rating: C

EPC Environmental Impact Rating: C

- Brought to market with no onward chain.
- A great opportunity to purchase this two-bedroom terraced home located on the popular Cogges development.
- Three allocated parking spaces.
- Two well-proportioned bedrooms.
- Bathroom with bath and shower over.
- Low maintenance rear garden with shed.



Manor Road - Witney

Approximate Gross Internal Area = 55.7 sq m / 599 sq ft
(Excluding Reserved Parking Space)

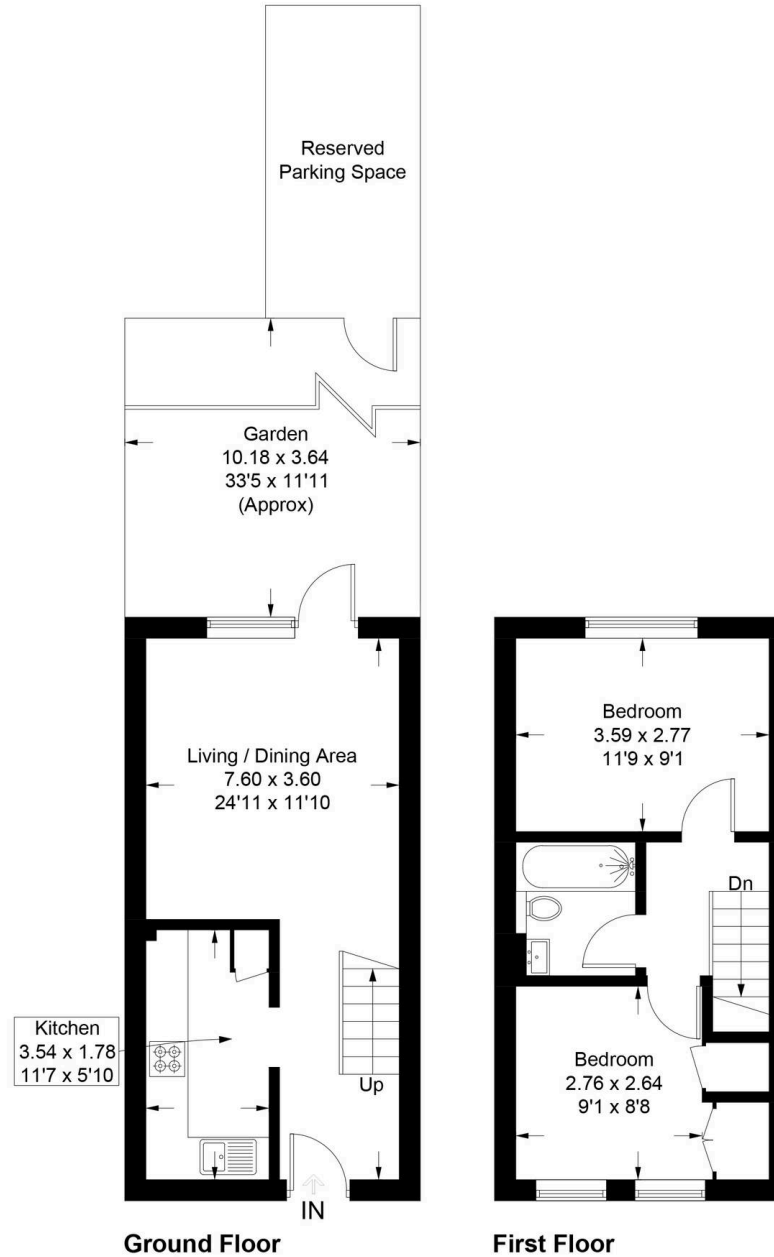


Illustration for identification purposes only, measurements are approximate,
not to scale. Fourlabs.co © (ID1293578)



Simpsons Witney Branch

4 Langdale Court Witney, Oxfordshire - OX28 6AD

01993 835030 • witney@simpsonsproperty.com • www.simpsonsproperty.com/