



19 Peregrine Way, Grove

Wantage

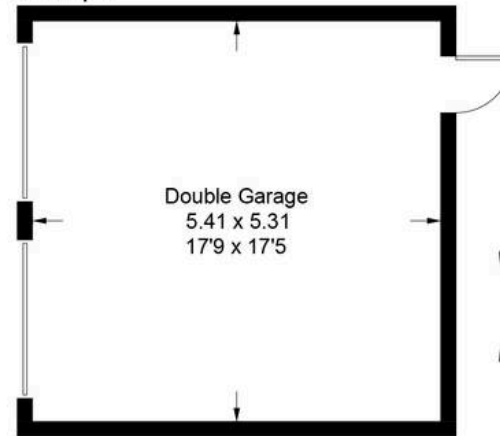
Simpsons

The Proactive Agent

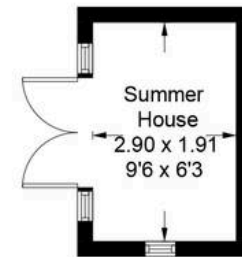
Guide Price **£510,000**

Peregrine Way - Grove

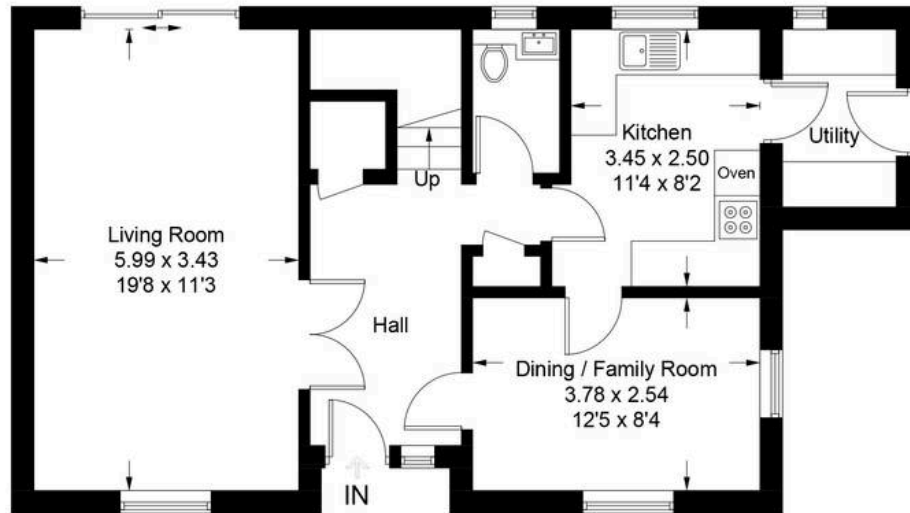
Approximate Gross Internal Area = 120.5 sq m / 1297 sq ft
Outbuildings = 35.8 sq m / 385 sq ft
(Including Double Garage)
Total = 156.3 sq m / 1682 sq ft



(Not Shown In Actual Location / Orientation)



(Not Shown In Actual Location / Orientation)



Ground Floor



First Floor

Illustration for identification purposes only, measurements are approximate, not to scale. Fourlabs.co © (ID1288012)

19 Peregrine Way

Grove, Wantage

Beautifully presented, four bedroom, master with newly fitted en-suite shower room, West-facing garden.

Council Tax band: E

Tenure: Freehold

- Beautifully Presented & Spacious Four Bedroom Detached Home In A Highly Sought After Location
- Within Walking Distance Of Local Shops, Amenities & Schools
- West Facing & Private Garden Which Has Been Landscaped With Mature Borders & Shrubs
- Newly Decorated Throughout & A Newly Fitted En-Suite Shower Room To The Master Bedroom



SCAN THE
QR CODE
TO BOOK
YOUR VIEWING

