



9 Hangar Lane, Grove

Wantage

Simpsons

The Proactive Agent

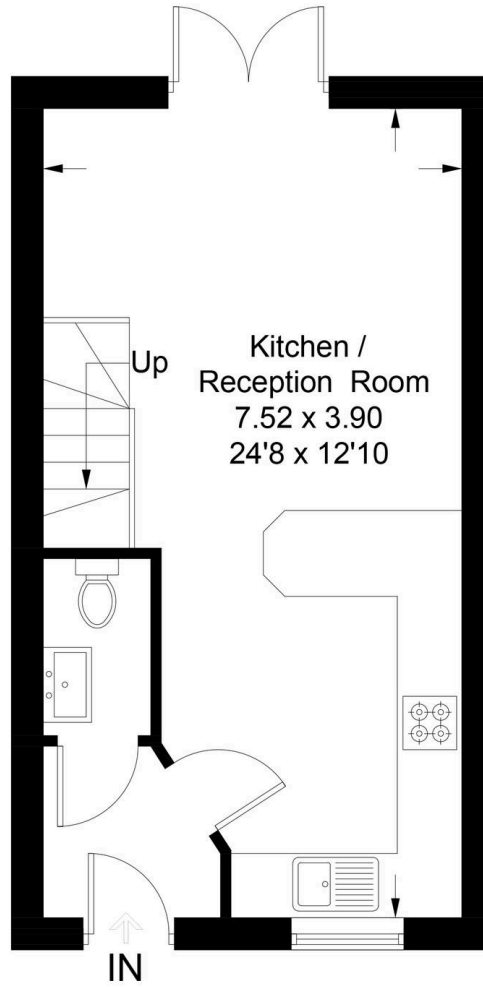
In Excess of **£270,000**

Hangar Lane - Grove

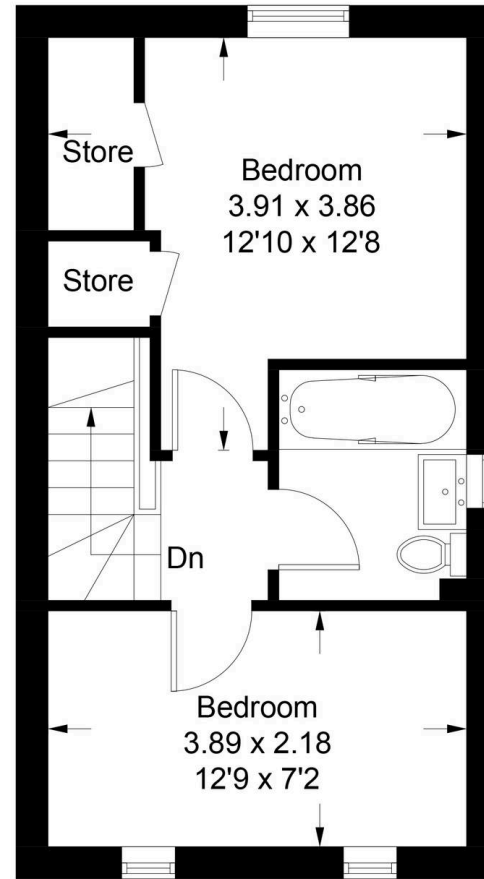
Approximate Gross Internal Area = 58.0 sq m / 632 sq ft



Garden
10.61 x 4.93
34'10 x 16'2
(Approx)



Ground Floor



First Floor

9 Hangar Lane

Grove, Wantage

This well maintained two bedroom semi-detached house presents an excellent opportunity for first time buyers and investors and is offered to the market with no onward chain.

Council Tax band: C

Tenure: Freehold

- Secured Onward Purchase, Ideal For First Time Buyers & Investors
- Large & Private Rear Garden With Access To The Parking At The Back
- Well Maintained Property Close To Schools, Shops & Amenities
- Open-Plan Living & Immaculately Presented Accommodation Throughout



SCAN THE
QR CODE
TO BOOK
YOUR VIEWING

