



Simpsons
The Proactive Agent

2 Race Farm Court Rectory Lane, Kingston Bagpuize
Abingdon

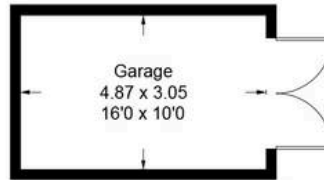
Guide Price **£900,000**

Rectory Lane - Kingston Bagpuize

Approximate Gross Internal Area = 266.2 sq m / 2865 sq ft

Garage = 14.8 sq m / 159 sq ft

Total = 281 sq m / 3024 sq ft

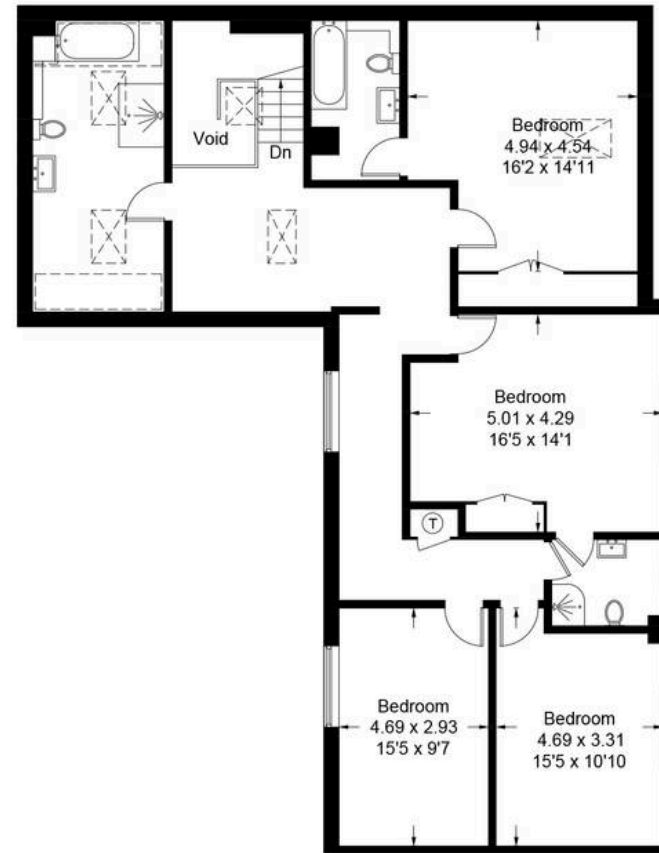


(Not Shown In Actual Location / Orientation)

= Reduced headroom below 1.5m / 5'0



Ground Floor



First Floor

Illustration for identification purposes only, measurements are approximate, not to scale. Fourlabs.co © (ID1286386)

2 Race Farm Court Rectory Lane

Kingston Bagpuize, Abingdon

A delightful, semi rural development set within wonderful grounds with spectacular views across the Oxfordshire countryside.

Council Tax band: G

Tenure: Freehold

- A delightful, semi rural development located on the outskirts of Kingston Bagpuize, set within wonderfully private grounds with extensive views and picturesque walks on the door step.
- Offering just over 3000sqft of contemporary, spacious accommodation with a beautifully presented, dual aspect, open plan kitchen/dining room.
- Dual aspect sitting room with French doors opening into a private, landscaped garden. Feature fireplace with an integrated wood burner, stone hearth and a brick/stone surround.
- Well proportioned, wider than average garage offering ample parking and further storage. Secondary, high quality, timber built garage to the immediate rear.
- In addition to vehicular access onto the courtyard frontage, there is secondary gated access on to a further driveway.
- Four very well proportioned bedrooms including a master and guest suite, both with an en-suite and Velux windows.
- Each household is a member of the Management Company who own the common parts. There is a contribution on a bi-annual basis to the costs of



SCAN THE
QR CODE
TO BOOK
YOUR VIEWING

