



Simpsons
The Proactive Agent

20 Metcalfe Close, Abingdon
Abingdon

Guide Price **£385,000**

Approximate Gross Internal Area
Ground Floor = 48.4 sq m / 521 sq ft
First Floor = 48.5 sq m / 522 sq ft
(Including Garage)
Total = 96.9 sq m / 1,043 sq ft



Ground Floor



First Floor

This plan is for layout guidance only. Not drawn to scale unless stated. Windows and door openings are approximate. Whilst every care is taken in the preparation of this plan, please check all dimensions, shapes and compass bearings before making any decisions reliant upon them.

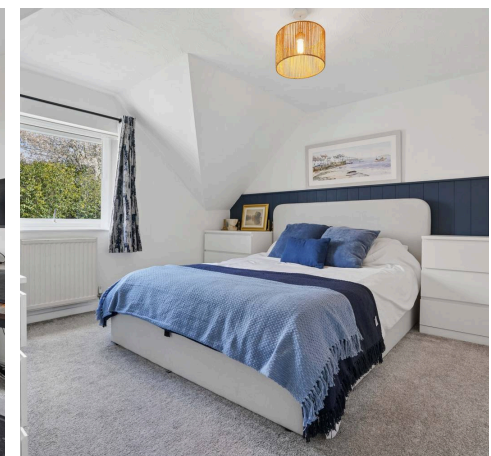
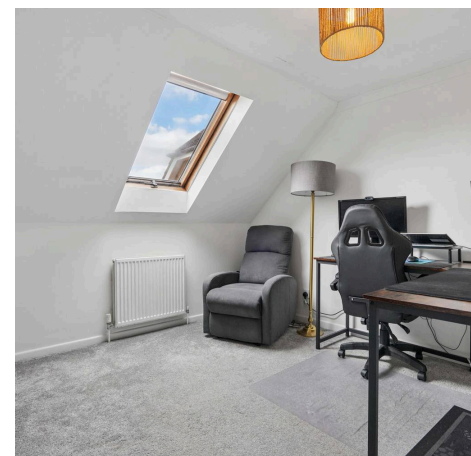
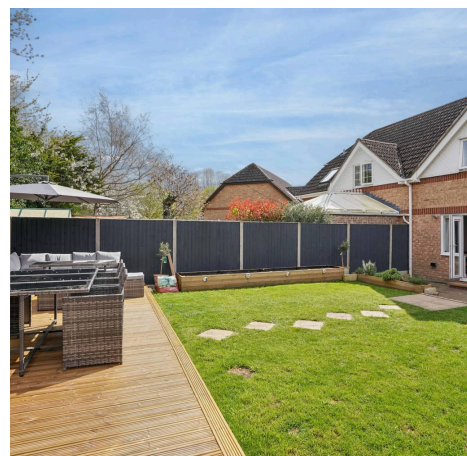
20 Metcalfe Close

Abingdon, Abingdon

A well kept family home located in a cul de sac in South Abingdon, a short walk from the Marina.
Council Tax band: C

Tenure: Freehold

- Sitting on a larger than average plot for the road, this well kept home offers spacious accommodation including three well proportioned bedrooms.
- Sizable rear garden, spacious enough to comfortably extend the existing accommodation without compromising the usable space.
- Rear aspect kitchen/diner with space for dining table and chairs, a light and airy space with windows and French doors opening/overlooking the garden.
- Extensive shingle driveway, with comfortable parking for up to four vehicles in addition to a single garage, ideal for storage or conversion into accommodation.
- Located in a desirable cul de sac location, a short walk from Southern Town Park, Abingdon Rugby Club and the Marina, with nearby circular and riverside walks.
- Well kept flooring and neutral decoration throughout.



SCAN THE
QR CODE
TO BOOK
YOUR VIEWING



