



**Greenwood House, Manor Road, Brize Norton**



## Greenwood House

A truly exceptional character home, discreetly positioned to offer privacy and tranquillity situated at the end of a private driveway with south-facing gardens and countryside views.

Council Tax band: F

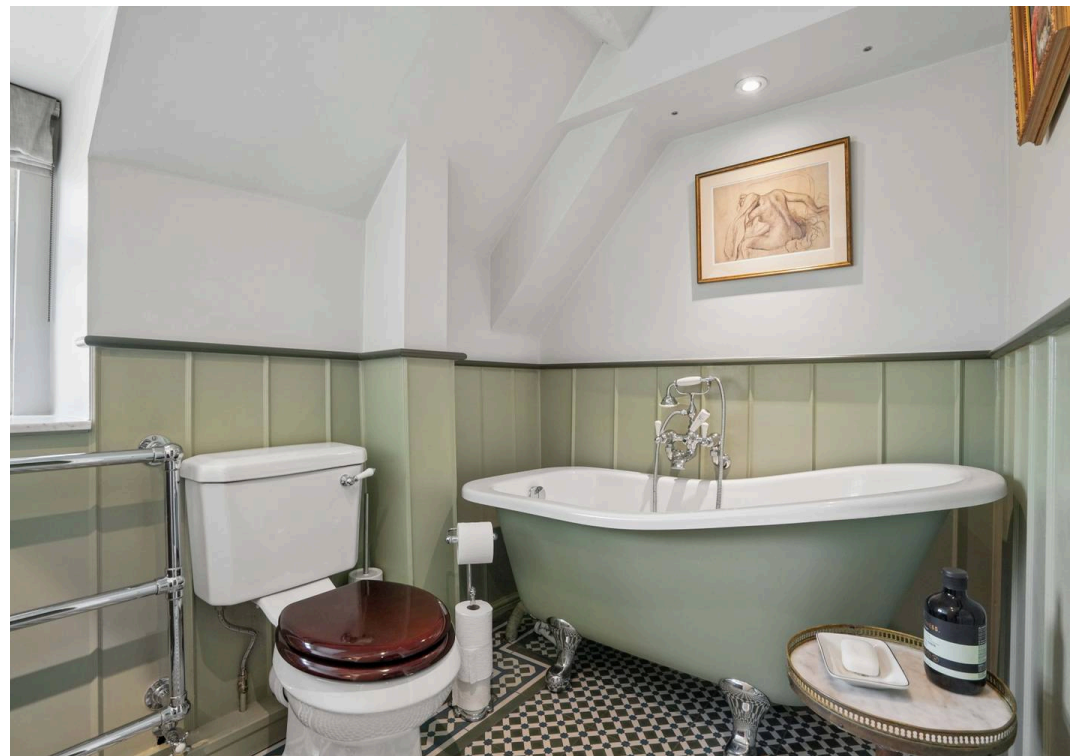
Tenure: Freehold

EPC Energy Efficiency Rating: D

EPC Environmental Impact Rating:

- Exceptional character home offering privacy and tranquillity situated at the end of a private driveway.
- Elegant interiors featuring period details, including an inglenook fireplace and handcrafted kitchen.
- Four well-appointed bedrooms, including two with ensembles, plus a stylish family bathroom.
- Stunning south-facing landscaped gardens with a summerhouse and far-reaching countryside views.
- Extensive private gravelled driveway and substantial double garage.
- Rich heritage, formerly the dairy and laundry to the historic Manor House, set within a village steeped in history.



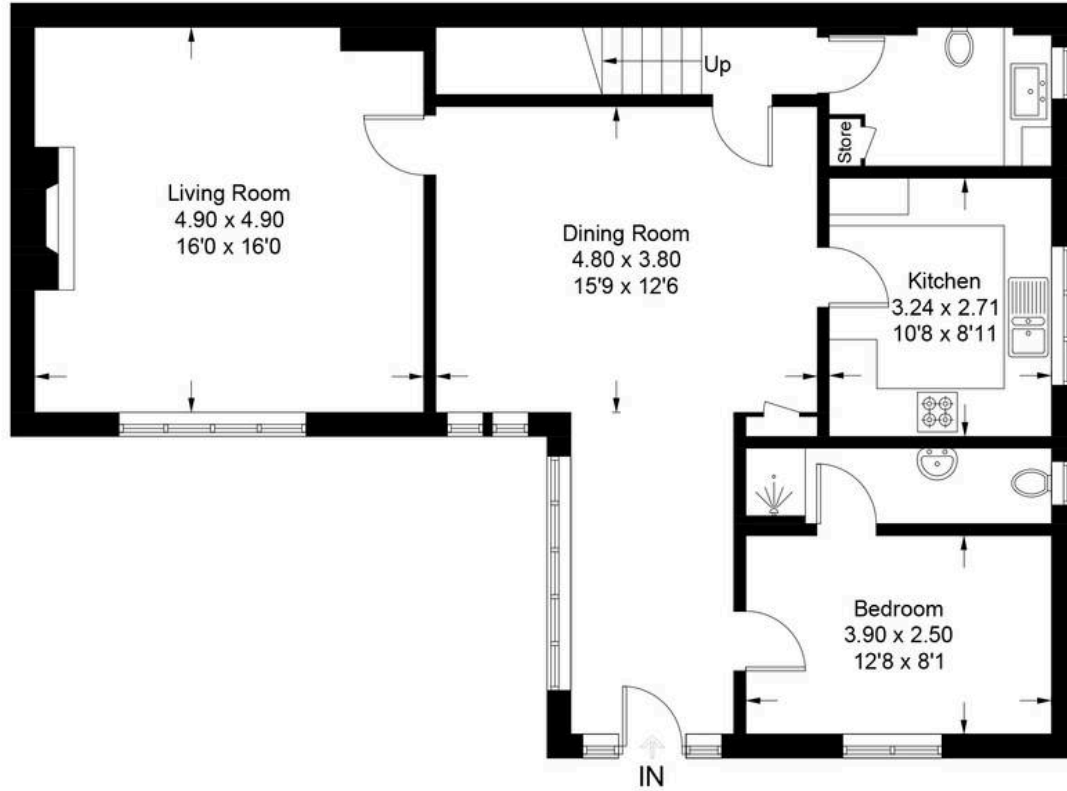


# Manor Road - Brize Norton

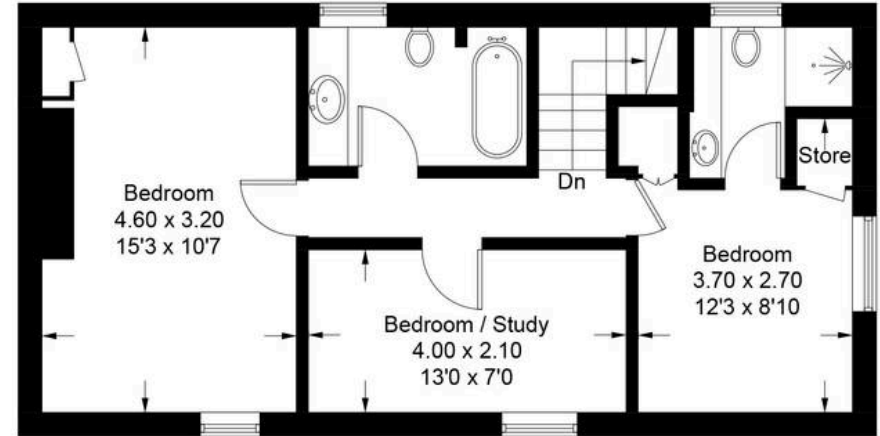
Approximate Gross Internal Area = 136.2 sq m / 1466 sq ft

Double Car Garage = 35.4 sq m / 381 sq ft

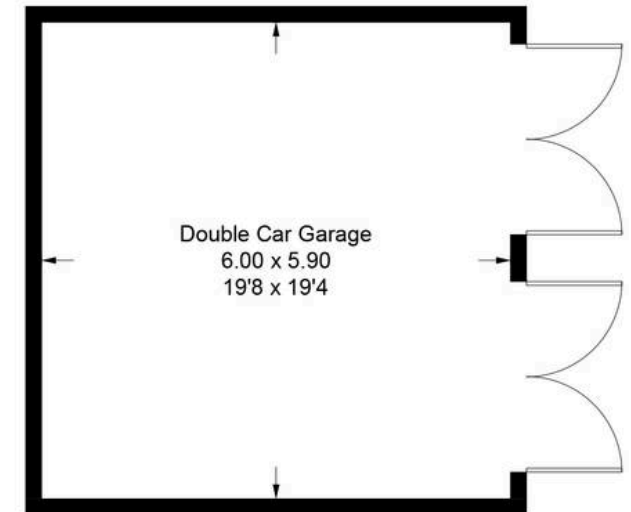
Total = 171.6 sq m / 1847 sq ft



Ground Floor



First Floor



(Not Shown In Actual  
Location / Orientation)



## Simpsons Witney Branch

4 Langdale Court Witney, Oxfordshire - OX28 6AD

01993 835030 • [witney@simpsonsproperty.com](mailto:witney@simpsonsproperty.com) • [www.simpsonsproperty.com/](http://www.simpsonsproperty.com/)