



## 8 Otwell Close, Abingdon

Abingdon

**Simpsons**

The Proactive Agent

Guide Price **£450,000**

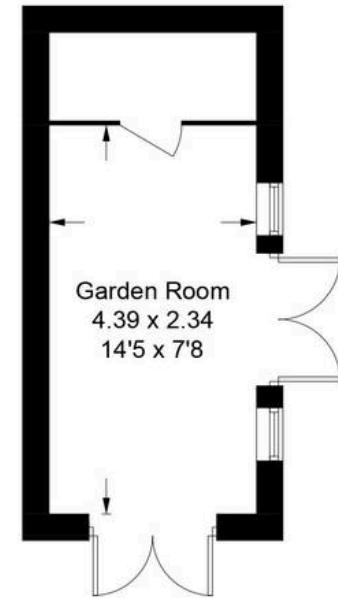
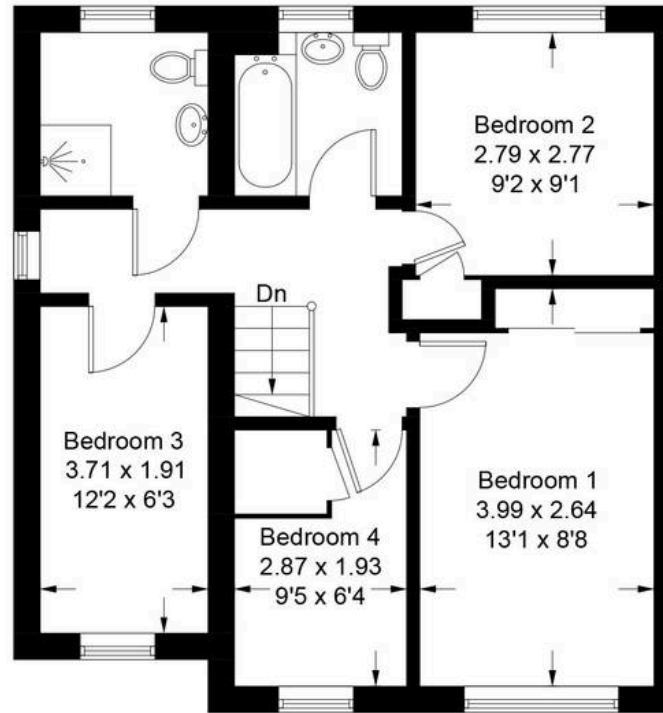
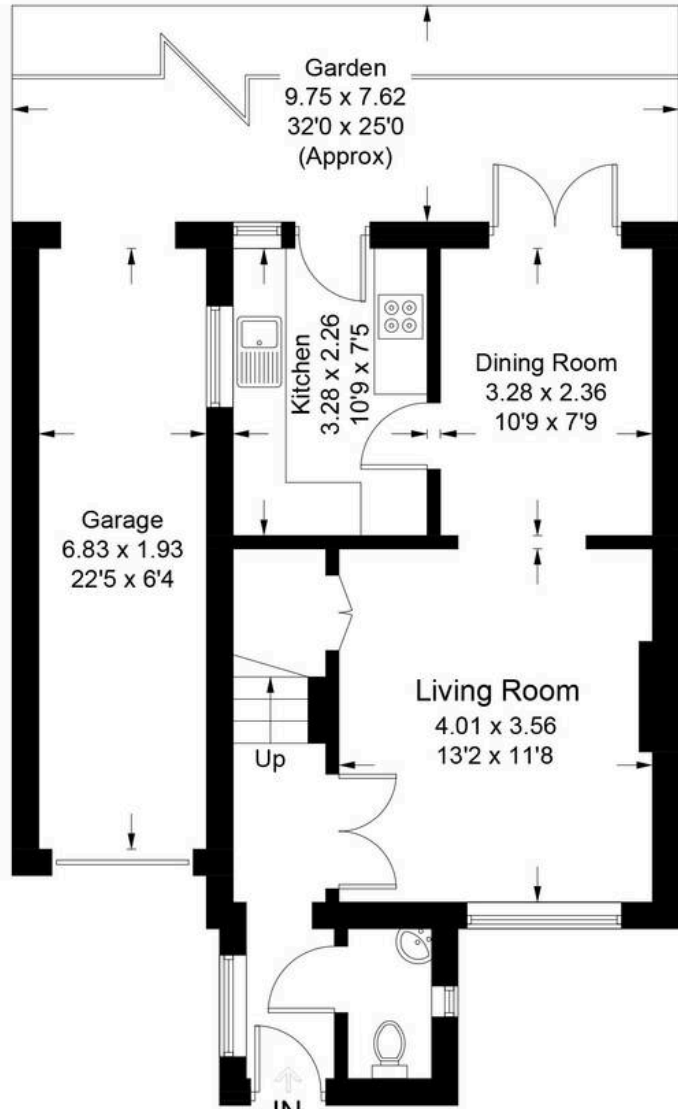
# Otwell Close - Abingdon

Approximate Gross Internal Area = 90.7 sq m / 976 sq ft

Garage = 13.2 sq m / 142 sq ft

Outbuilding = 12.8 sq m / 138 sq ft

Total = 116.7 sq m / 1256 sq ft



(Not Shown In Actual Location / Orientation)

# 8 Otwell Close

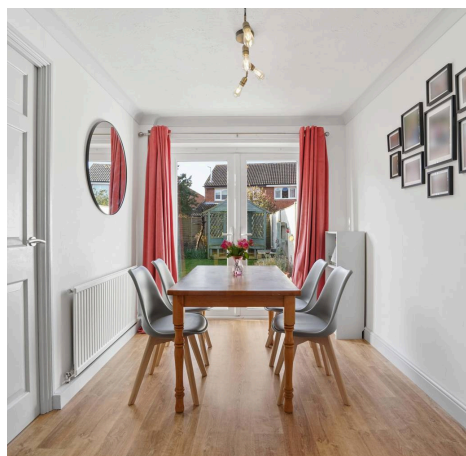
Abingdon, Abingdon

This well presented family home is located in a private, well kept cul de sac location on the Peachcroft development in North Abingdon.

Council Tax band: C

Tenure: Freehold

- Located at the end of a cul de sac on the Peachcroft development, this extended family home benefits from four bedrooms and a useful home office/garden room.
- Two first floor bath/shower rooms in addition to a convenient and separate ground floor WC.
- A larger than average, double length garage with direct access to the garden.
- Front aspect sitting room, rear aspect dining room with double doors opening into the rear garden.
- Walking distance and catchment area for Rush Common Primary School.
- Gas central heating an UPVC double glazing.
- A mix of wood effect flooring, tiles and well kept carpet floor coverings.
- Well kept, low maintenance South/East facing garden offering privacy from neighbouring homes.
- The original garage has been converted into a garden room/home office with double glazing, electric and useful cupboard and loft storage.



SCAN THE  
QR CODE  
TO BOOK  
YOUR VIEWING



