



1 Gosling Court Bath Street, Abingdon

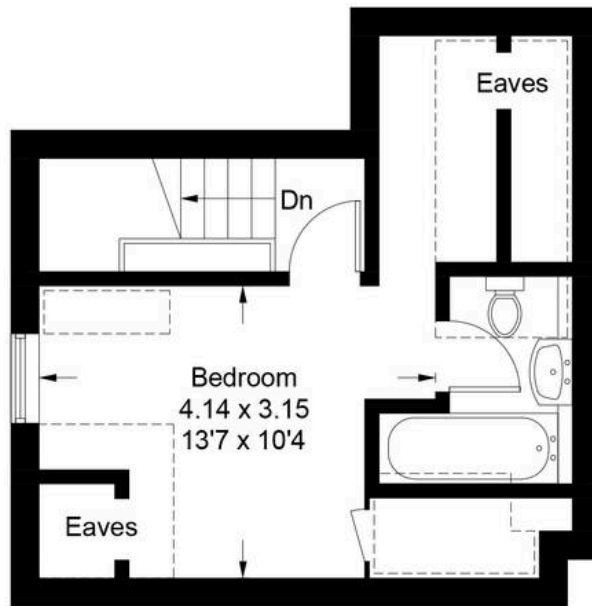
Abingdon

£220,000


Simpsons
The Proactive Agent

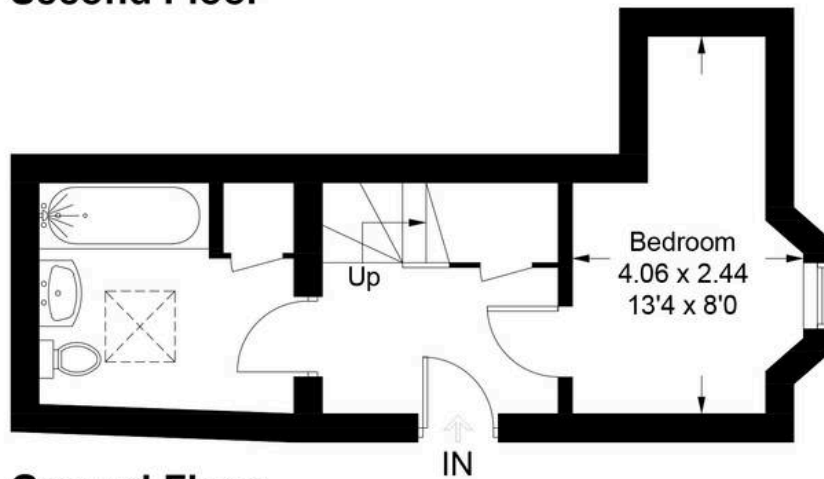
Gosling Court - Abingdon

Approximate Gross Internal Area = 78.0 sq m / 836 sq ft
(Including Eaves)

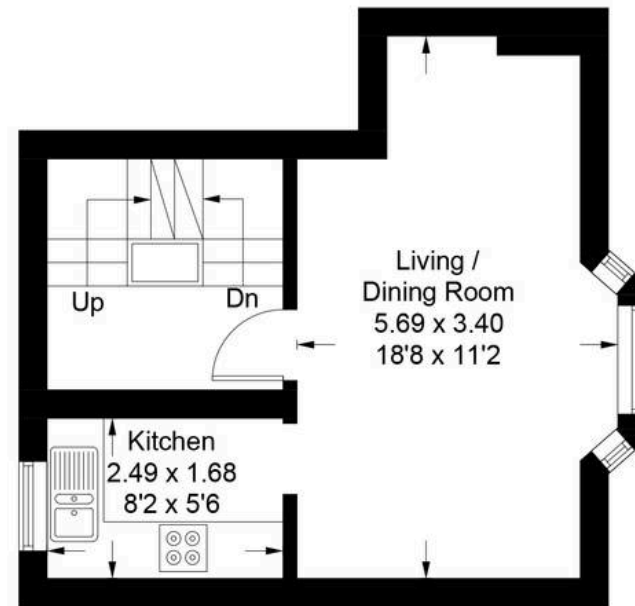


Second Floor

 = Reduced headroom below 1.5m / 5'0



Ground Floor



First Floor

Illustration for identification purposes only, measurements are approximate,
not to scale. Fourlabs.co © (ID1288834)

1 Gosling Court Bath Street

Abingdon, Abingdon

Step inside this beautifully presented Grade II listed apartment on Bath Street, offering a unique blend of character and contemporary living across three generous floors.

Council Tax band: D

Tenure: Leasehold

- This flat is conveniently located on Bath Street, just a short walk from the town centre with easy access to nearby shops, bars, restaurants and major transport links.
- A spacious Grade II listed two double bedroom apartment configured over three floors making for flexible living accommodation.
- Two bathrooms, one located on the ground floor the second is an en-suite to the principle bedroom on the second floor.
- Service Charge of £2366, this is split into £1407 service charge & £958 reserve fund with a 977 year lease.
- One allocated off street parking space.



SCAN THE
QR CODE
TO BOOK
YOUR VIEWING

