



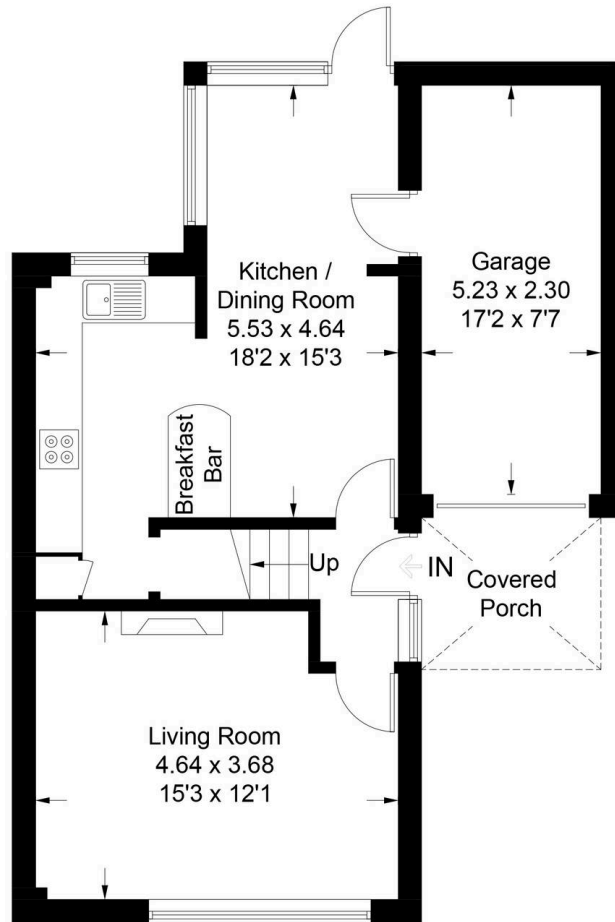
Simpsons
The Proactive Agent

22 Windrush Way, Abingdon
Abingdon

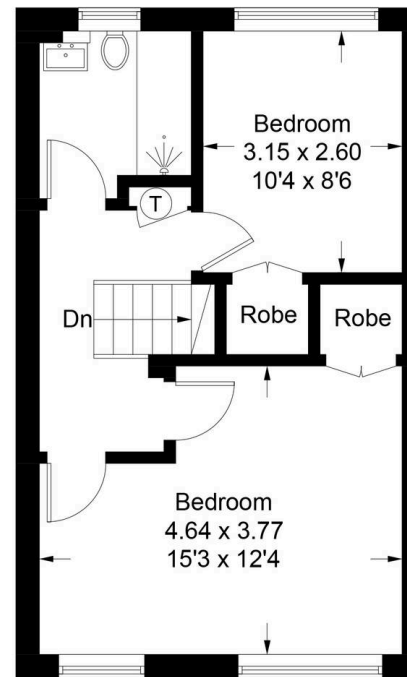
Guide Price **£385,000**

Windrush Way - Abingdon

Approximate Gross Internal Area = 94.3 sq m / 1015 sq ft



Ground Floor



First Floor

22 Windrush Way

Abingdon, Abingdon

Situated on the popular Radley Green development, this beautifully presented property offers versatile space and is close to all local amenities and transport links.

Council Tax band: D

Tenure: Freehold

- A superbly appointed and very well decorated modern family home located on the Radley Green development
- Large frontage laid to lawn with driveway parking for up to two cars.
- Walking distance to and catchment for Rush Common Primary School. Other nearby amenities include Peachcroft shops, The College Oak and bus routes to serving Abingdon, Oxford and other nearby towns.
- Gas central heating and UPVC double glazing.
- Modern kitchen with an open plan dining area
- Enclosed and established rear garden, laid to lawn with decorative patio area



SCAN THE
QR CODE
TO BOOK
YOUR VIEWING

