



39 Miller Place, Steventon

Abingdon

Simpsons

The Proactive Agent

Guide Price **£550,000**

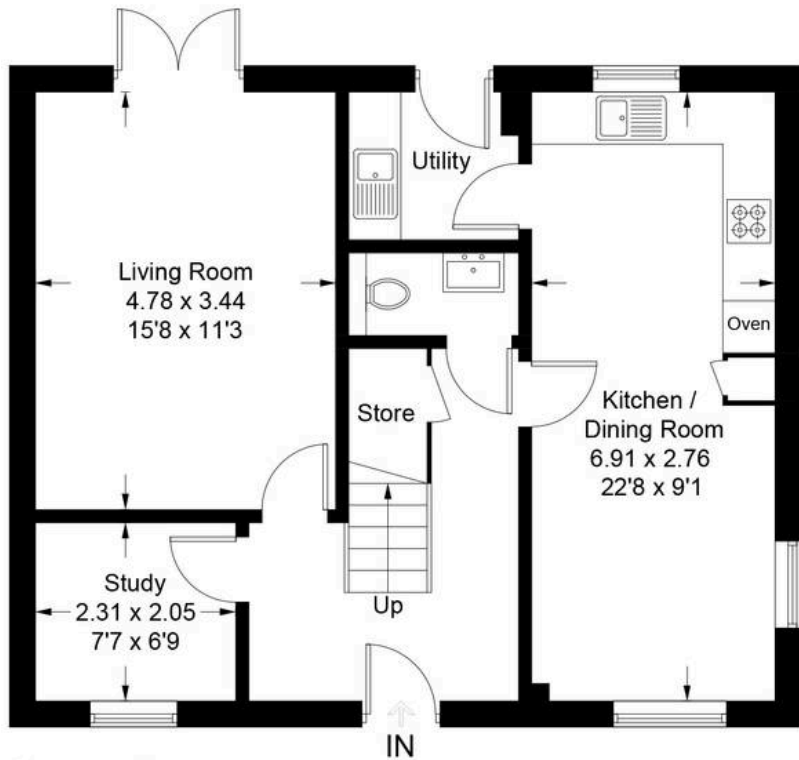
Miller Place - Steventon

Approximate Gross Internal Area = 117.8 sq m / 1268 sq ft

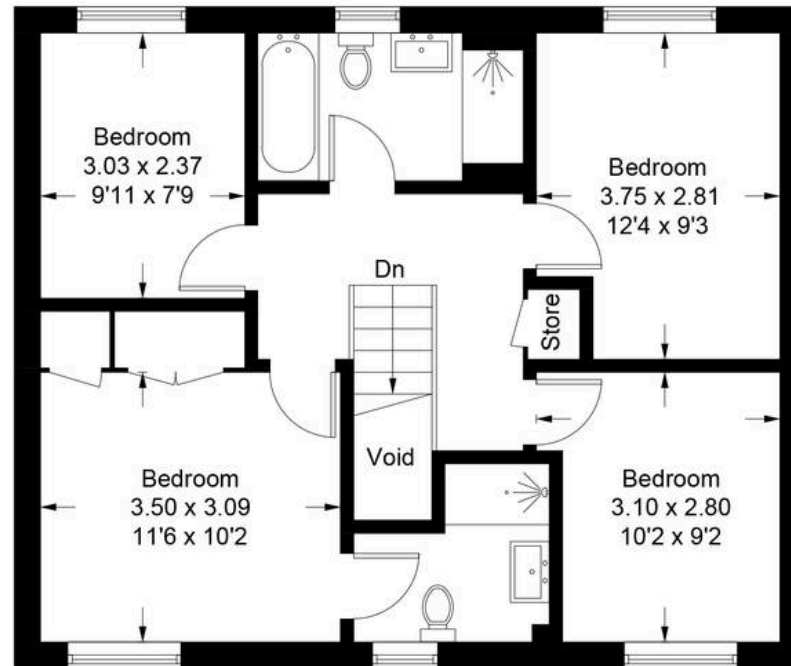
Garage = 17.8 sq m / 191 sq ft

Total = 135.6 sq m / 1459 sq ft

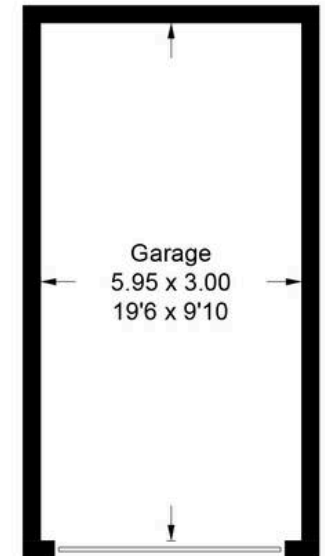
(Excluding Void)



Ground Floor



First Floor



(Not Shown In Actual Location / Orientation)

39 Miller Place

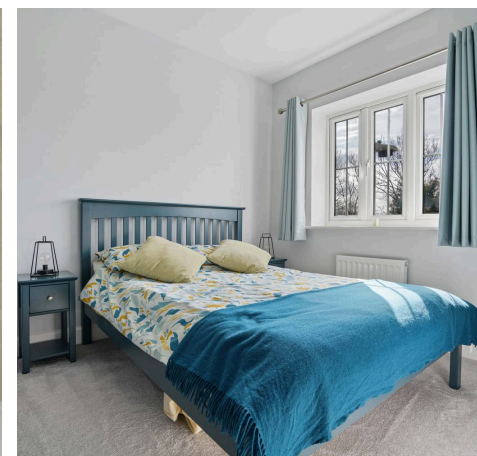
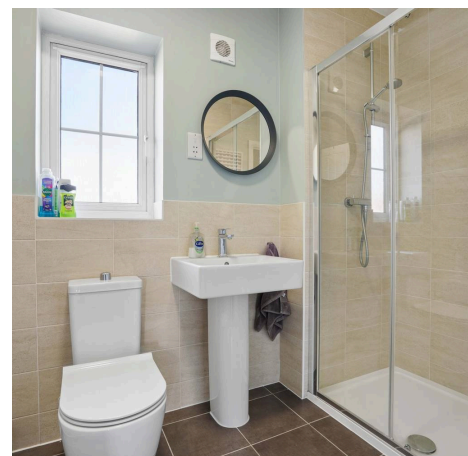
Steventon, Abingdon

A beautiful red brick four bedroom detached property, built in 2016 by Miller Homes, in the popular, well-connected village of Steventon.

Council Tax band: E

Tenure: Freehold

- Hardstanding driveway parking complemented by a single garage which has a power supply
- Spacious living room with patio doors leading to the rear garden
- Master bedroom with tiled ensuite shower room
- Enclosed, laid-to-lawn rear garden with side gate access to the driveway
- Large Kitchen/Diner with integrated appliances and separate utility room
- Ground floor study, ideal for those who work from home
- Located a short walk to all the village amenities and close to bus stops
- Small development built by reputable builder Miller Homes in 2016
- Estate fee of approx £290 per year



SCAN THE
QR CODE
TO BOOK
YOUR VIEWING



