



37 Lavender View, Witney



## 37 Lavender View

A fantastic opportunity to purchase this neatly presented two-bedroom terraced home, ideally located on the popular Madley Park development and within easy walking distance of local amenities.

Council Tax band: C

Tenure: Freehold

EPC Energy Efficiency Rating: C

EPC Environmental Impact Rating: C

- A wonderful opportunity to purchase this neatly presented two-bedroom terraced home located on the popular Madley Park development.
- Open plan sitting/dining room with french doors leading out to the rear garden.
- Garage and off-street parking.
- Two double bedrooms.
- Modern bathroom with bath and shower over.
- Fitted kitchen with breakfast bar.

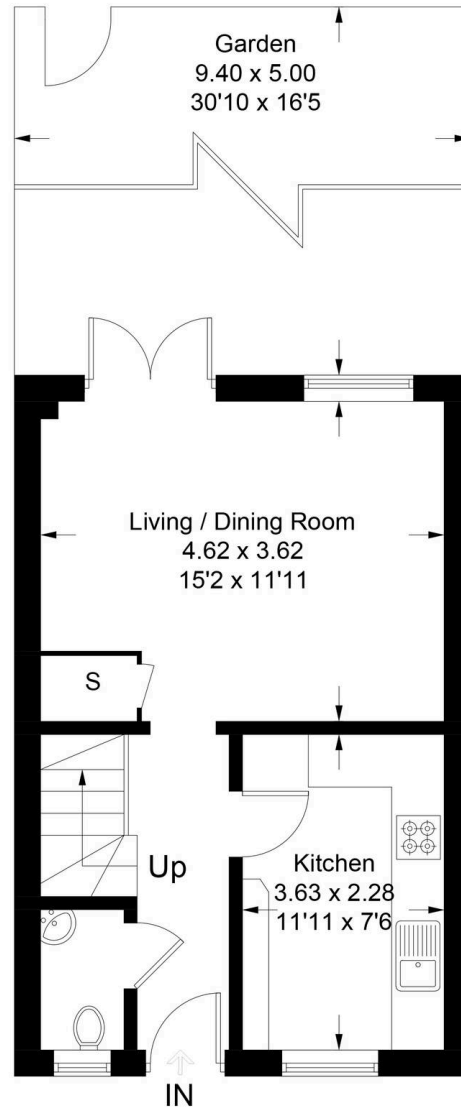


# Lavender View - Witeny

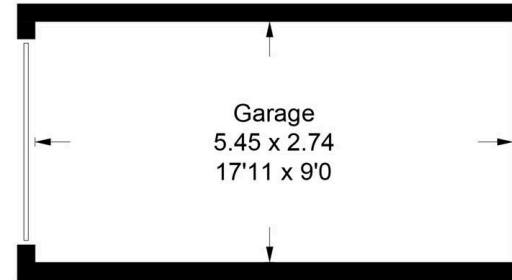
Approximate Gross Internal Area = 68.4 sq m / 736 sq ft

Garage = 14.9 sq m / 160 sq ft

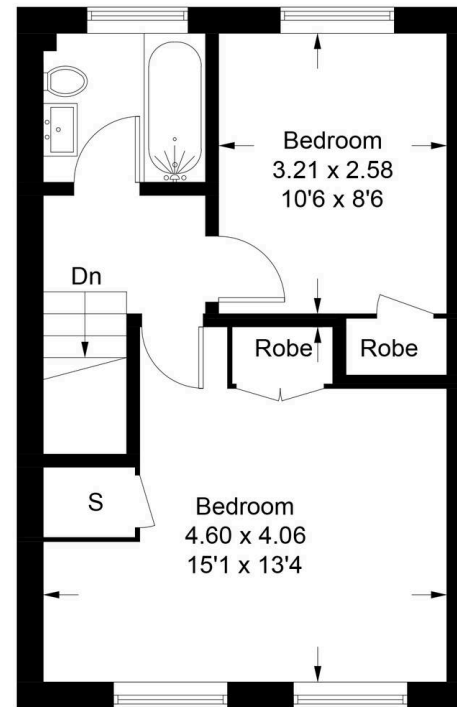
Total = 83.3 sq m / 896 sq ft



**Ground Floor**



(Not Shown In Actual  
Location / Orientation)



**First Floor**



## Simpsons Witney Branch

4 Langdale Court Witney, Oxfordshire - OX28 6AD

01993 835030 • [witney@simpsonsproperty.com](mailto:witney@simpsonsproperty.com) • [www.simpsonsproperty.com/](http://www.simpsonsproperty.com/)