



134 Manor Road, Witney



134 Manor Road

A well presented one-bedroom home situated on the highly sought-after Cogges development.

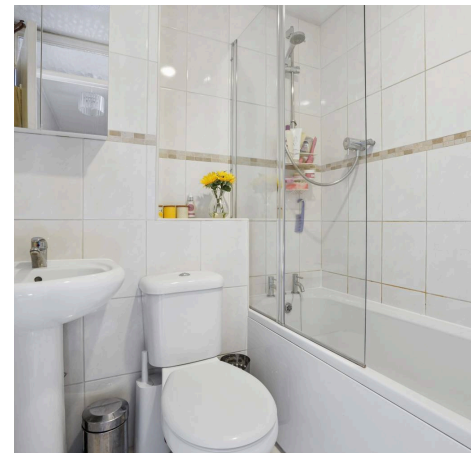
Council Tax band: B

Tenure: Freehold

EPC Energy Efficiency Rating: C

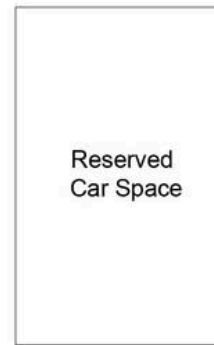
EPC Environmental Impact Rating:

- A well-presented one-bedroom house located on the highly sought-after Cogges development.
- Open plan sitting/dining room with door leading out to the rear garden.
- Bedroom with built-in cupboards.
- Two off-street parking spaces.
- Potential to extend (STPP).
- Fitted kitchen.



Manor Road - Witney

Approximate Gross Internal Area = 43.5 sq m / 468 sq ft
(Excluding Reserved Car Spaces)



Reserved
Car Space

(Not Shown In Actual
Location / Orientation)



Reserved
Car Space

(Not Shown In Actual
Location / Orientation)

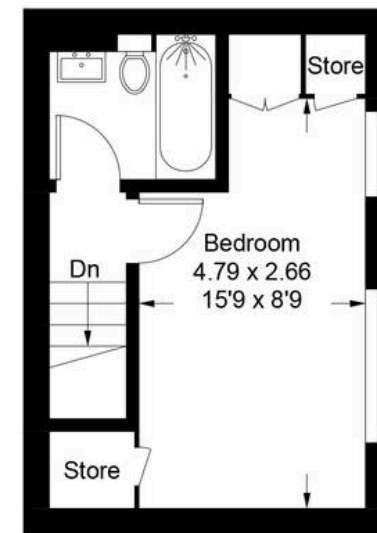
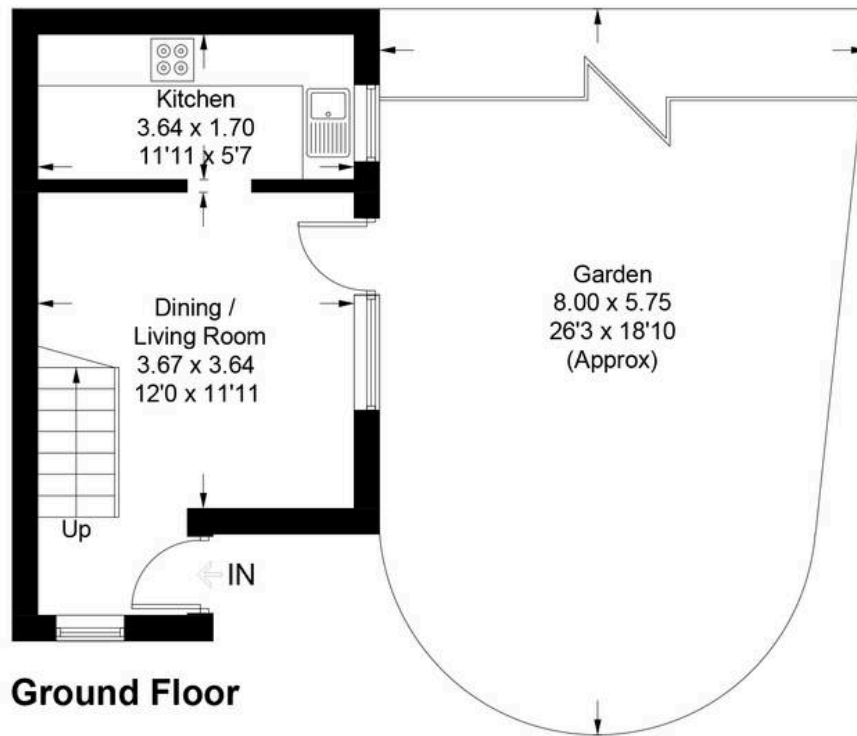


Illustration for identification purposes only, measurements are approximate,
not to scale. Fourlabs.co © (ID1288346)



Simpsons Witney Branch

4 Langdale Court Witney, Oxfordshire - OX28 6AD

01993 835030 • witney@simpsonsproperty.com • www.simpsonsproperty.com/