



Mary Ellis Way, Witney

Guide Price £94,500



Mary Ellis Way

Witney

A fantastic opportunity to acquire this modern one-bedroom shared ownership maisonette, offered at a 42% share.

Council Tax band: B

Tenure: Leasehold

EPC Energy Efficiency Rating: B

EPC Environmental Impact Rating: B

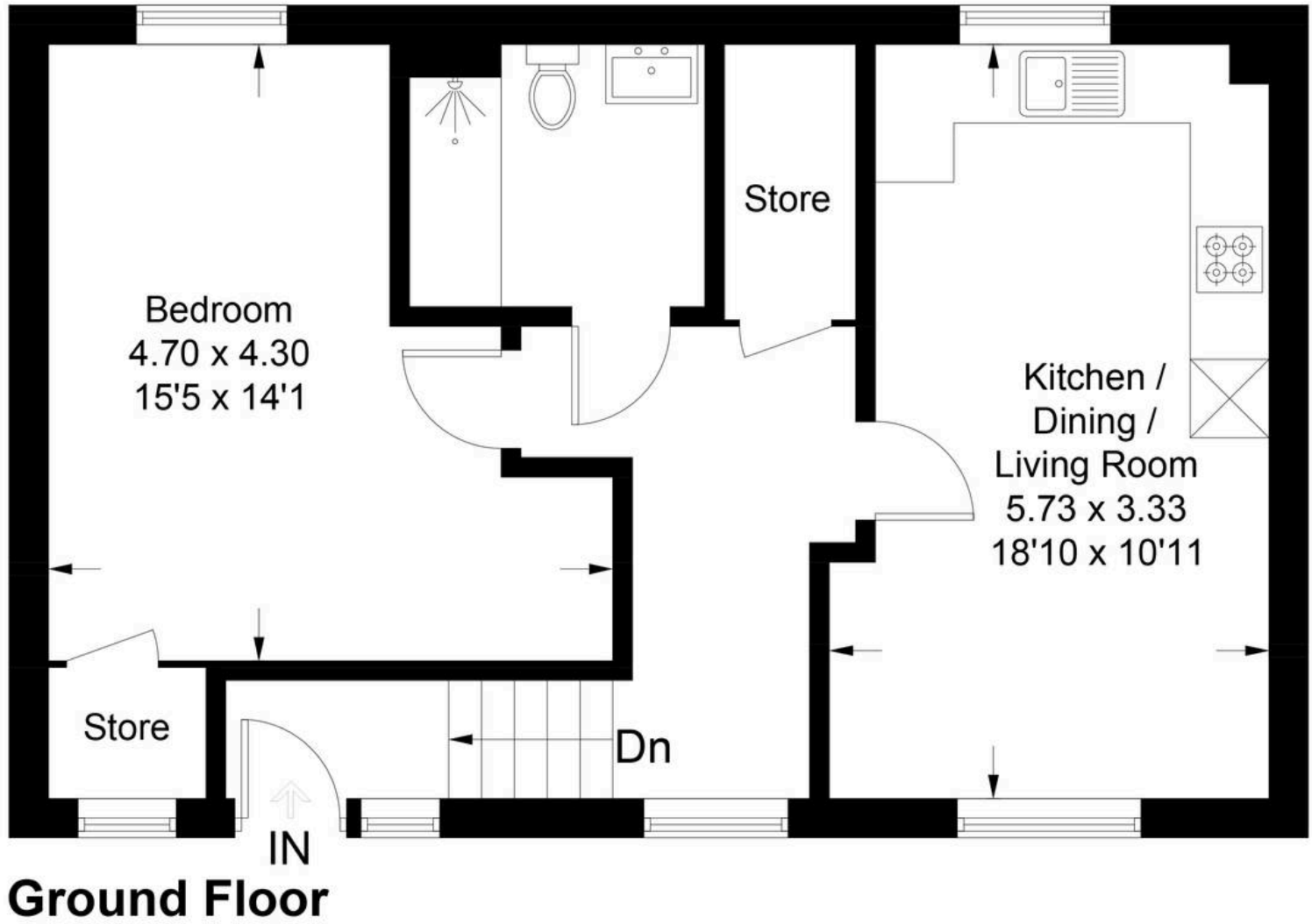
- Offered to the market at a 42% share.
- Spacious double bedroom with built in storage cupboard.
- Open plan kitchen/dining/living room.
- Modern bathroom with bath and shower.
- Allocated parking space.
- Communal garden.
- Close to transport links such as the nearby A40 and S1 bus stop.





Mary Ellis Way - Witney

Approximate Gross Internal Area = 53.6 sq m / 577 sq ft



(Not Shown In Actual Location / Orientation)

Illustration for identification purposes only, measurements are approximate, not to scale. Fourlabs.co © (ID1287588)



Simpsons Witney Branch

4 Langdale Court Witney, Oxfordshire - OX28 6AD

01993 835030 • witney@simpsonsproperty.com • www.simpsonsproperty.com/