



**11a Besselsleigh Road, Wootton**

Abingdon

Guide Price **£265,000**

**Simpsons**  
The Proactive Agent

# Besselsleigh Road - Wootton

Approximate Gross Internal Area = 82.0 sq m / 883 sq ft

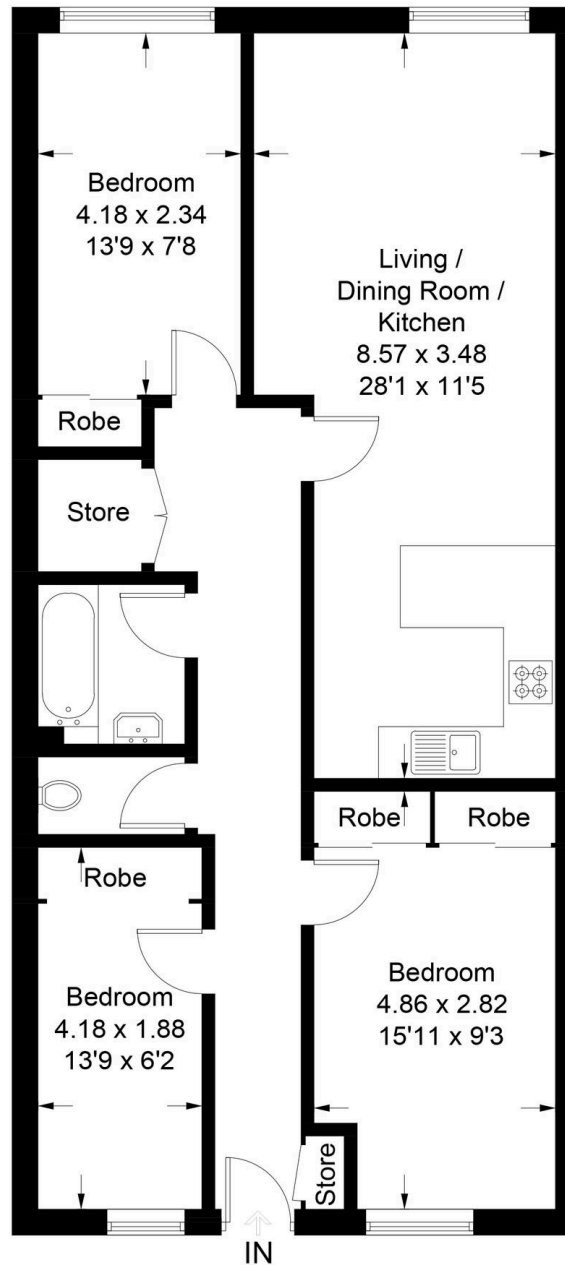


Illustration for identification purposes only, measurements are approximate, not to scale. Fourlabs.co © (ID1276247)

# 11a Besselsleigh Road

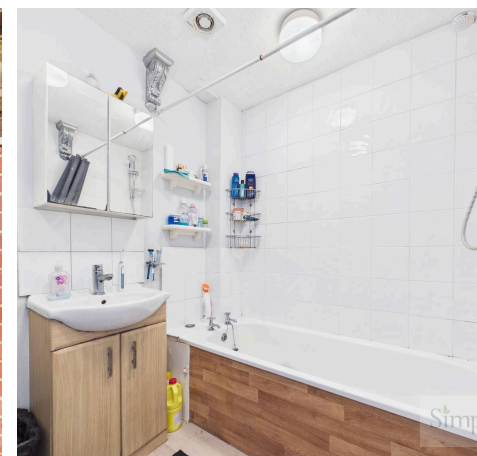
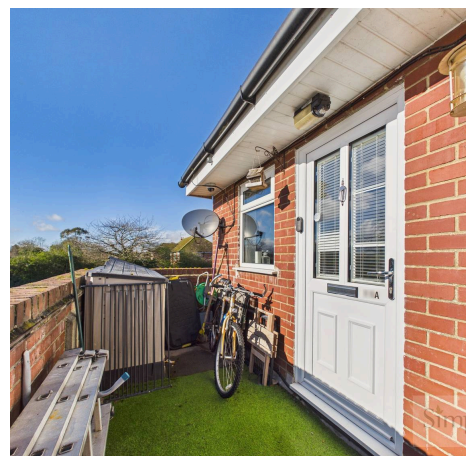
Wootton, Abingdon

Situated in the heart of the popular village of Wootton, north of Abingdon, this larger than average first floor apartment offers spacious and versatile accommodation.

Council Tax band: B

Tenure: Leasehold

- Central village location, close to all local amenities and transport links
- A much larger than average apartment offering nearly 900 square feet of living accommodation
- Spacious lounge/diner leading on to a modern kitchen that was installed in 2024
- Two large double bedrooms and a generous third bedroom which can also be used as a home office
- New UPVC Soffits and Fascias that were installed in 2025
- All internal doors were replaced in the last 12 months
- The property is connected to Gigaclear fibre broadband
- Peppercorn Ground Rent and an Annual Maintenance Charge of £1100



SCAN THE  
QR CODE  
**TO BOOK**  
YOUR VIEWING



