



46 Quakers Court, Abingdon

Abingdon

Simpsons

The Proactive Agent

In Excess of **£250,000**

Quakers Court - Abingdon

Approximate Gross Internal Area = 69.5 sq m / 748 sq ft

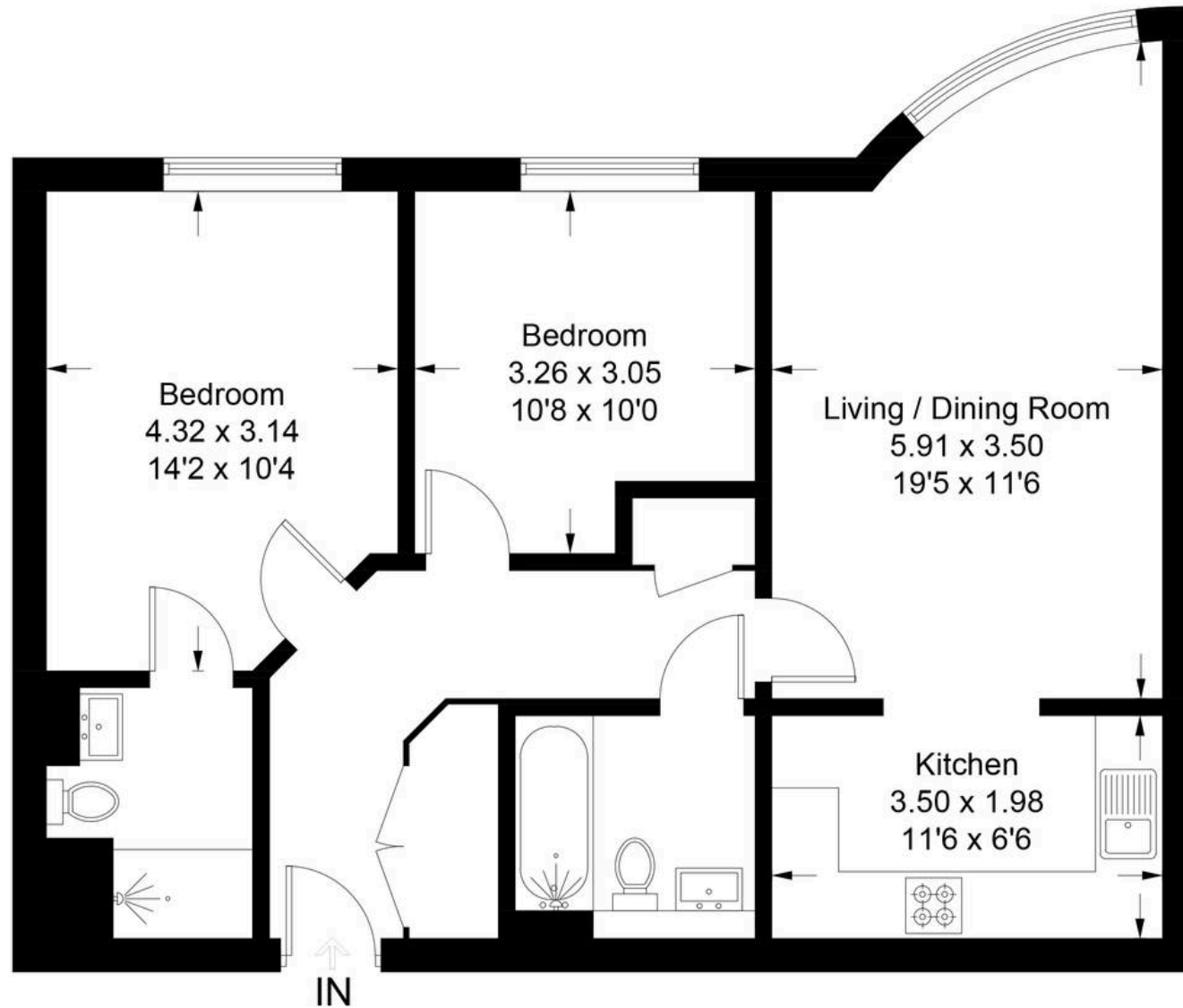


Illustration for identification purposes only, measurements are approximate, not to scale. Fourlabs.co © (ID1273026)

46 Quakers Court

Abingdon, Abingdon

A well kept, town centre apartment, benefiting from 'lift access' to all floors, underground allocated parking and well kept communal areas.

Council Tax band: C

Tenure: Leasehold

- A spacious second floor apartment benefitting from lift access from ground level.
- Two well proportioned bedrooms, including a master bedroom with a shower room en-suite and built in storage/wardrobe space.
- We are advised there is a 103 year leasehold term, ground rent payments of approximately £10 per month and a service charge of £226 per month.
- Spacious hallway giving access to bedrooms, sitting room and a further primary bathroom suite.
- Open plan lounge/diner opening into a well equipped kitchen.
- Gas mains central heating,UPVC double glazing, secure entry phone intercom.
- Allocated parking for one vehicle, within secure basement parking.



SCAN THE
QR CODE
TO BOOK
YOUR VIEWING

