



2 Bishops Farm Mill Witan Way, Witney

2 Bishops Farm Mill Witan Way

Offered to the market with no onward chain, this beautifully presented two-bedroom apartment is set within a charming former mill and enjoys stunning countryside views.

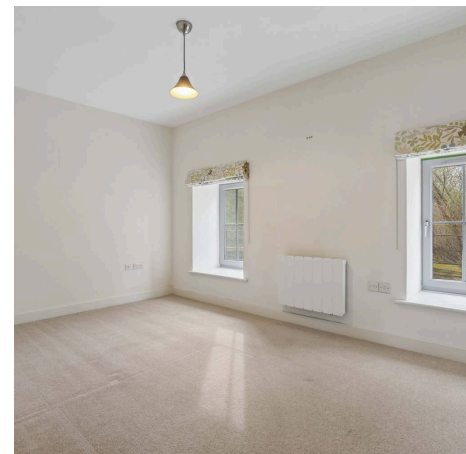
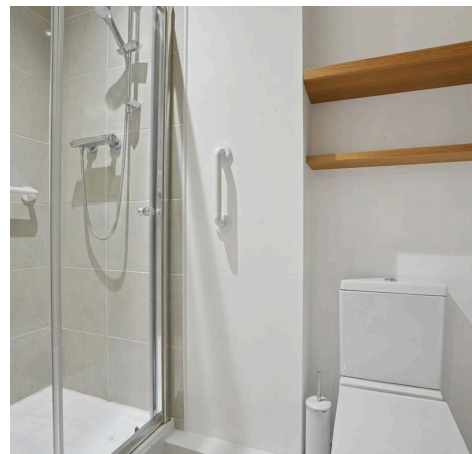
Council Tax band: C

Tenure: Leasehold

EPC Energy Efficiency Rating: C

EPC Environmental Impact Rating:

- Brought to market with no onward chain.
- Open plan kitchen/dining/living room with integrated appliances and island.
- Two generous size bedrooms, master bedroom with ensuite shower room.
- Allocated parking with additional visitor parking.
- Stylish family bathroom with bath and shower over.
- Located within walking distance of all local amenities and nearby transport links.



Bishops Farm Mill Lane - Witney

Approximate Gross Internal Area = 99.96 sq m / 1076 sq ft

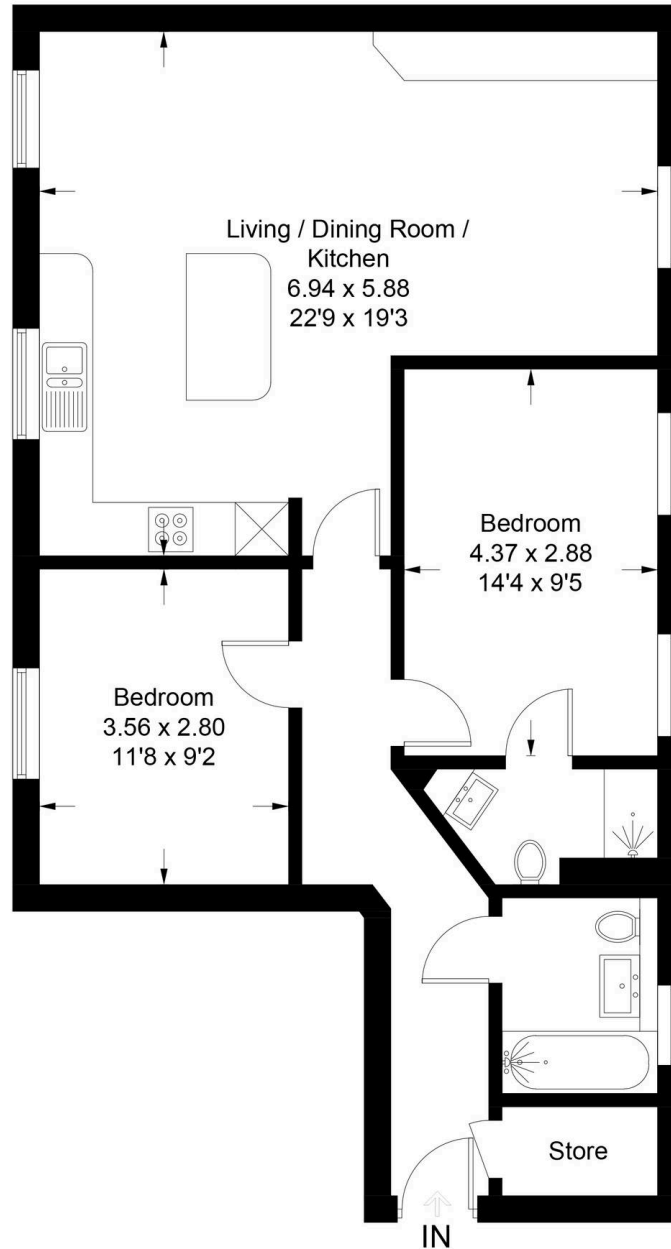


Illustration for identification purposes only, measurements are approximate, not to scale. Fourlabs.co © (ID1284113)



Simpsons Witney Branch

4 Langdale Court Witney, Oxfordshire - OX28 6AD

01993 835030 • witney@simpsonsproperty.com • www.simpsonsproperty.com/