



**5 Queens Road, Carterton**

Guide Price **£270,000**





## 5 Queens Road

Brought to market with no onward chain is this fantastic opportunity to purchase a terraced three-bedroom property situated on a popular road within walking distance of all town centre amenities.

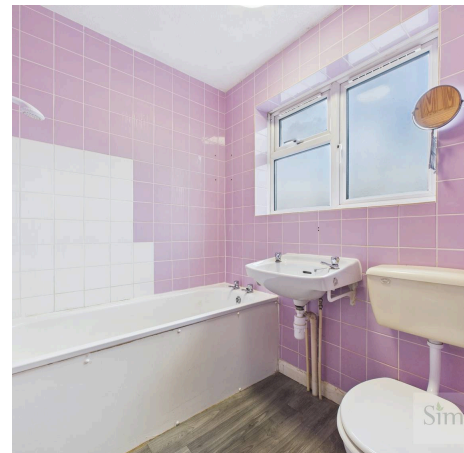
Council Tax band: C

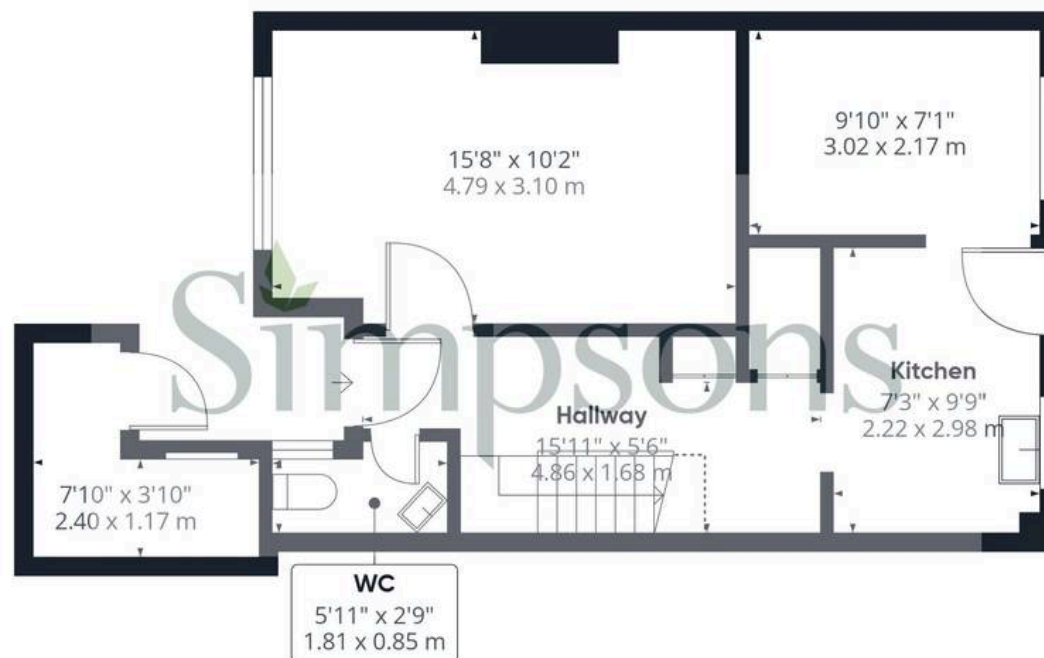
Tenure: Leasehold

EPC Energy Efficiency Rating: C

EPC Environmental Impact Rating: C

- Brought to market with no onward chain.
- A wonderful opportunity to purchase this terraced three-bedroom home located on a popular road within walking distance of all town centre amenities.
- Two double bedrooms and one single bedroom.
- Bathroom with bath and shower over.
- Low maintenance rear garden.
- Ideal for first-time buyers or investors.





Floor 0

Approximate total area<sup>(1)</sup>

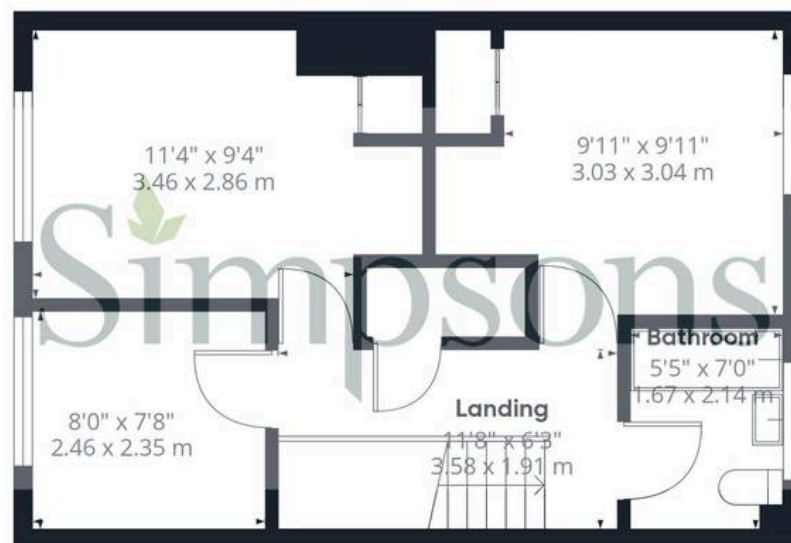
866 ft<sup>2</sup>

80.6 m<sup>2</sup>

Reduced headroom

15 ft<sup>2</sup>

1.4 m<sup>2</sup>



Floor 1

(1) Excluding balconies and terraces

Reduced headroom

Below 5 ft/1.5 m

Calculations reference the RICS IPMS 3C standard. Measurements are approximate and not to scale. This floor plan is intended for illustration only.

GIRAFFE360







## Simpsons Witney Branch

4 Langdale Court Witney, Oxfordshire - OX28 6AD

01993 835030 • [witney@simpsonsproperty.com](mailto:witney@simpsonsproperty.com) • [www.simpsonsproperty.com/](http://www.simpsonsproperty.com/)