



1 Sadlers Court, ABINGDON

Abingdon

Simpsons
The Proactive Agent

£235,000

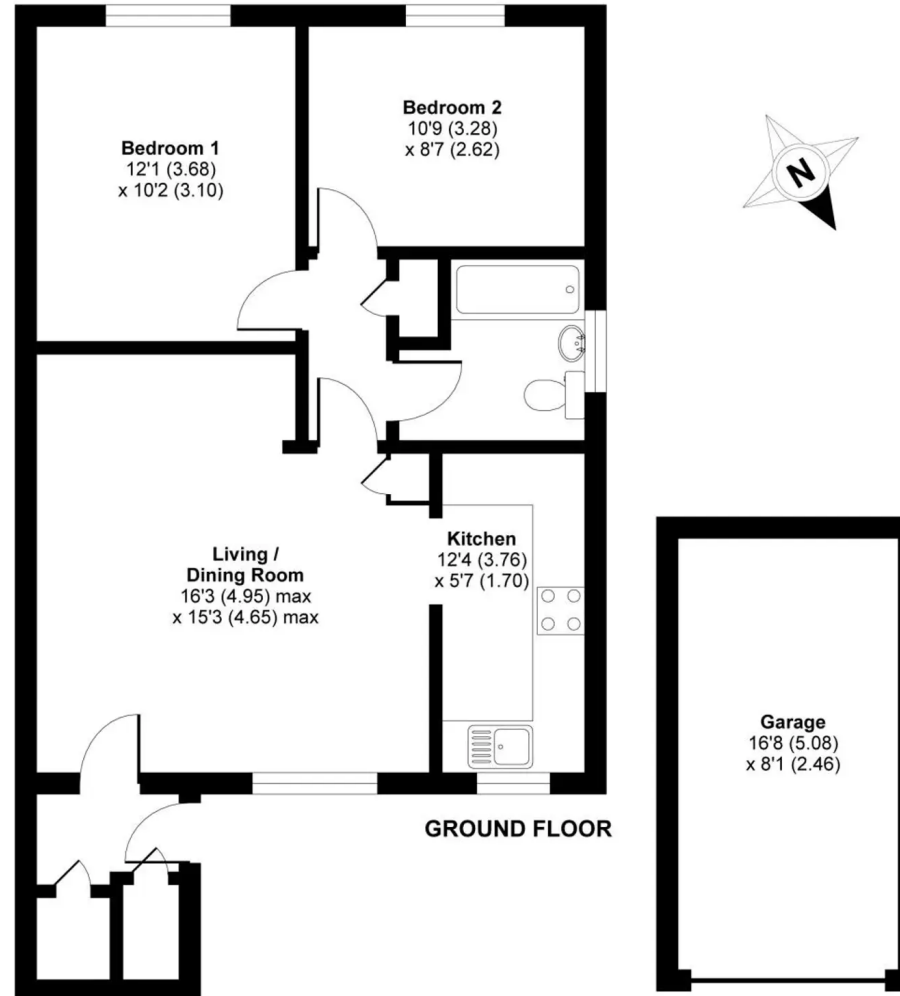


SCAN THE
QR CODE
FOR DETAILS



Sadlers Court, Abingdon, OX14

APPROX. GROSS INTERNAL FLOOR AREA 795 SQ FT 73.9 SQ METRES (INCLUDES GARAGE)



Whilst every attempt has been made to ensure the accuracy of the floor plan contained here, measurements of doors, windows and rooms are approximate and no responsibility is taken for any error, omission or misstatement. These plans are for representation purposes only as defined by RICS Code of Measuring Practice and should be used as such by any prospective purchaser. Specifically no guarantee is given on the total square footage of the property if quoted on this plan. Any figure given is for initial guidance only and should not be relied on as a basis of valuation.

1 Sadlers Court

ABINGDON, Abingdon

This well-proportioned ground floor maisonette offers larger than average accommodation with the benefit of a small courtyard garden. Benefitting from a private front door, there is a large entrance hallway with built in storage, and two double bedrooms.

Council Tax band: C

Tenure: Leasehold

- A well kept ground floor apartment with a courtyard garden and garage.
- Gas central heating installed by the present owner.
- Modern kitchen and bathroom suite.
- For sale with vacant possession.
- No onward chain.
- 87 year leasehold terms, service charge £240 per year.



SCAN THE
QR CODE
TO BOOK
YOUR VIEWING



