



1 Sadlers Court, ABINGDON

Abingdon

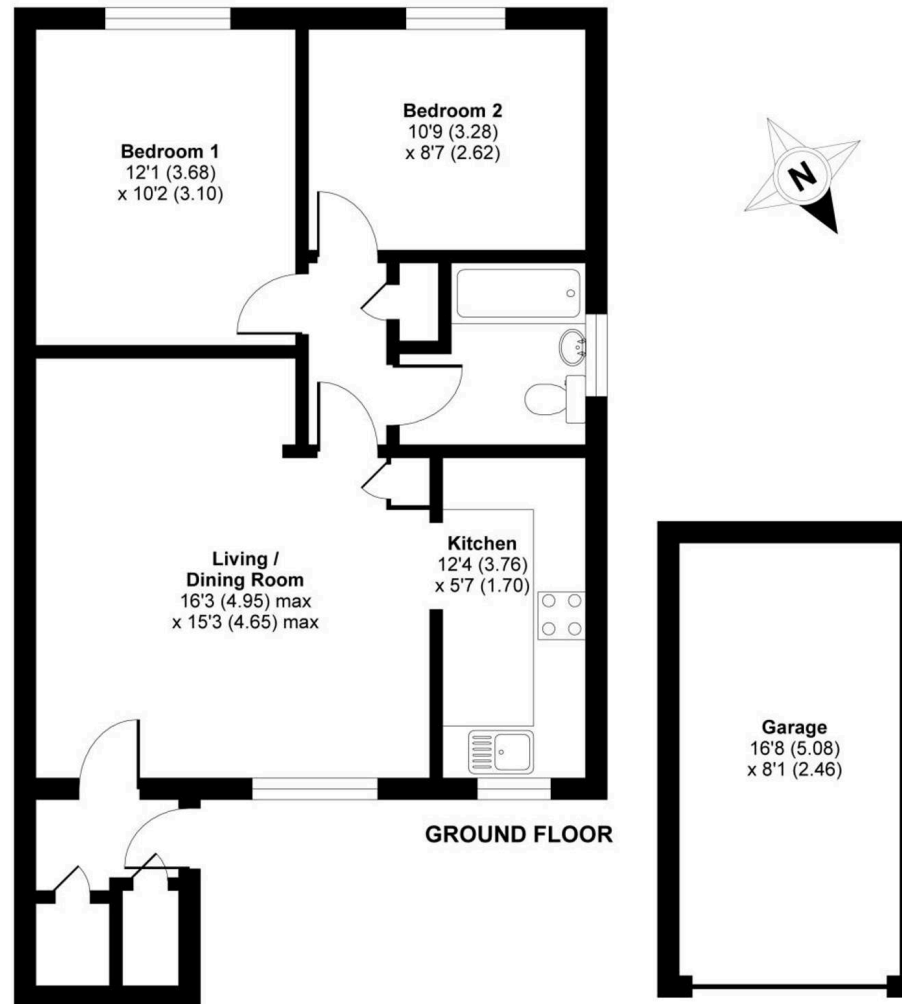
Guide Price **£235,000**

Simpsons

The Proactive Agent

Sadlers Court, Abingdon, OX14

APPROX. GROSS INTERNAL FLOOR AREA 795 SQ FT 73.9 SQ METRES (INCLUDES GARAGE)



Whilst every attempt has been made to ensure the accuracy of the floor plan contained here, measurements of doors, windows and rooms are approximate and no responsibility is taken for any error, omission or misstatement. These plans are for representation purposes only as defined by RICS Code of Measuring Practice and should be used as such by any prospective purchaser. Specifically no guarantee is given on the total square footage of the property if quoted on this plan. Any figure given is for initial guidance only and should not be relied on as a basis of valuation.

1 Sadlers Court

ABINGDON, Abingdon

This well-proportioned ground floor maisonette offers larger than average accommodation with the benefit of a small courtyard garden, fronting on to a green.

Council Tax band: C

Tenure: Leasehold

- A ground floor apartment located in Sadlers Court in North Abingdon, offered for sale with the certainty of no onward chain.
- The property benefits from a brand new 990 year leasehold term, in the process of being finalised and paid for by the vendor. Ground rent of £150 per year (rising by RPI after 15 years).
- Sadlers Court is located just off Twelve Acre Drive, and is set around a large open green with ample resident and guest parking spaces/garages.
- £260 per year service charge, covering upkeep of the communal areas.
- Gas central heating and UPVC double glazing.
- Garage with up and over door in addition to ample resident and guest parking.
- No onward chain.



SCAN THE
QR CODE
TO BOOK
YOUR VIEWING



