



## 36 Thornley Close, Abingdon

Abingdon

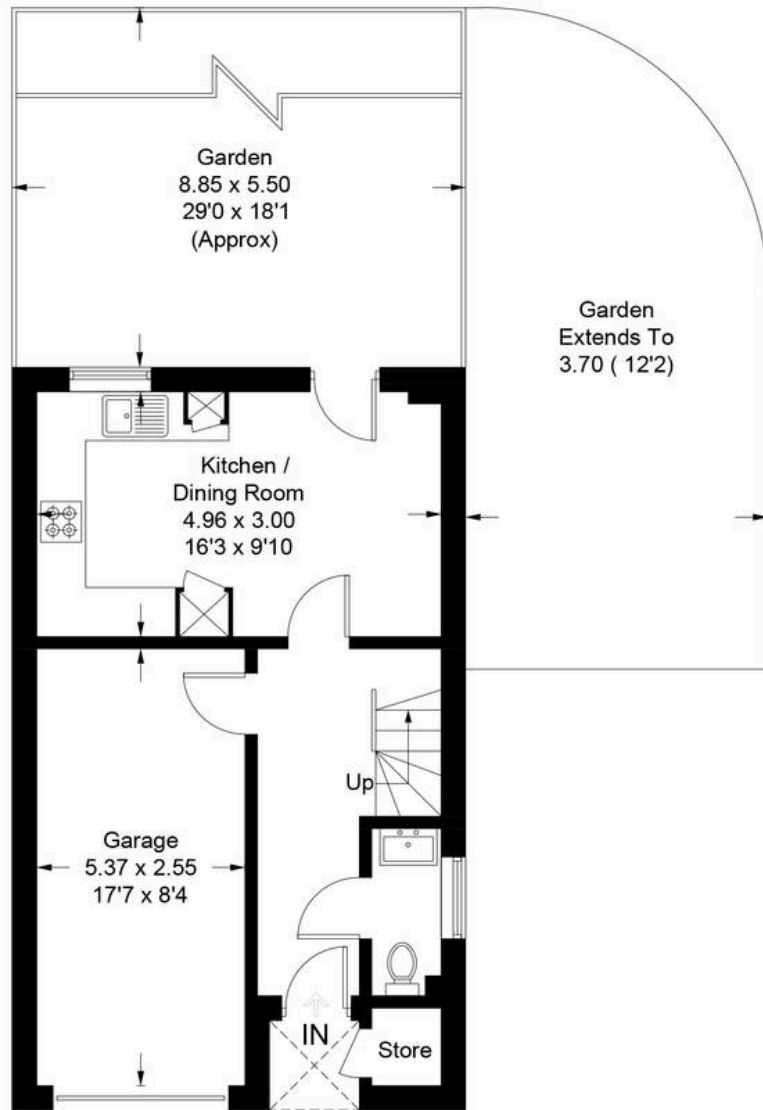
**Simpsons**

The Proactive Agent

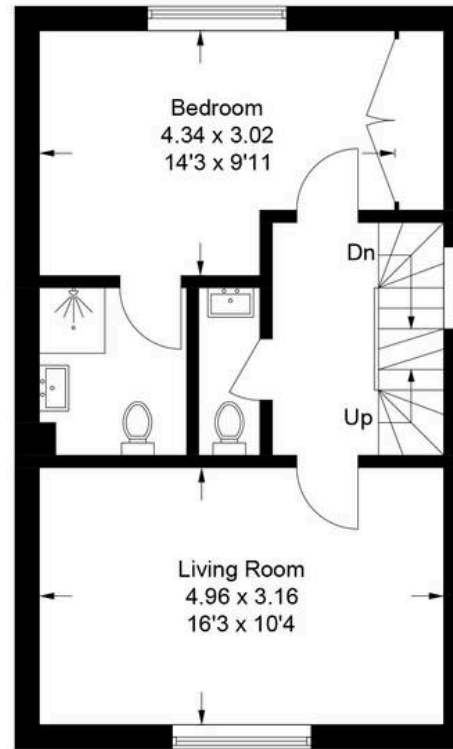
Guide Price **£475,000**

# Thornley Close - Abingdon

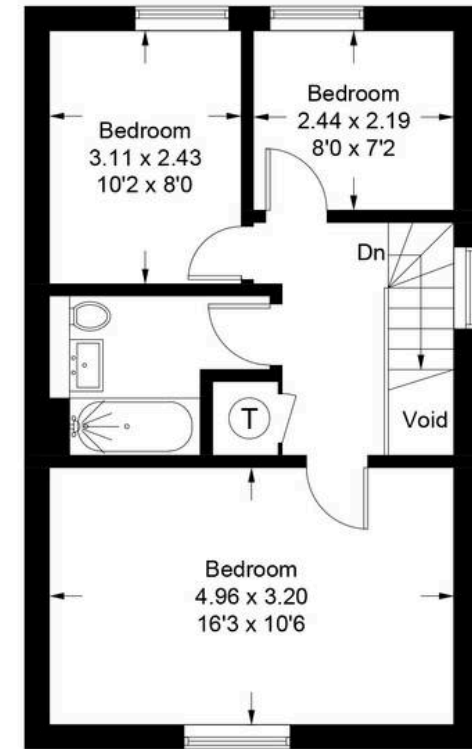
Approximate Gross Internal Area = 123.0 sq m / 1324 sq ft  
(Excluding Void & External Store)



**Ground Floor**



**First Floor**



**Second Floor**

Illustration for identification purposes only, measurements are approximate, not to scale. Fourlabs.co © (ID1269336)

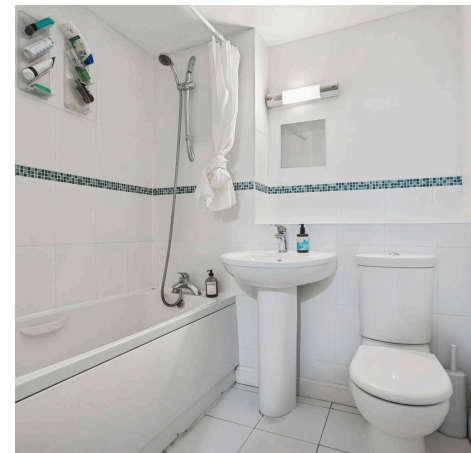
# 36 Thornley Close

Abingdon, Abingdon

A well kept family home in a lovely cul de sac location on the outskirts of Abingdon town centre.  
Council Tax band: E

Tenure: Freehold

- Complete upward chain.
- Arranged over three floors, this 1324sqft town house offers well proportioned, spacious accommodation with a versatile layout.
- Four bedrooms, including an en-suite master bedroom and the added benefit of a WC or bathroom on each floor.
- Open plan, rear aspect ground floor kitchen/diner, opening into an East facing rear garden.
- Solid wood, double glazed windows redecorated to a light grey finish. Gas central heating.
- Useful side lawn with the option to extend the fencing and incorporate into the existing rear garden. Further potential to extend the property to the rear under permitted development.
- Walking distance to the Ock Street end of Abingdon town centre, various local primary and secondary schools and A34 transport links.



SCAN THE  
QR CODE  
TO BOOK  
YOUR VIEWING



