



19 Rayson Lane, Witney



19 Rayson Lane

A neatly presented three double bedroom terraced home located on a popular street on the Windrush development.

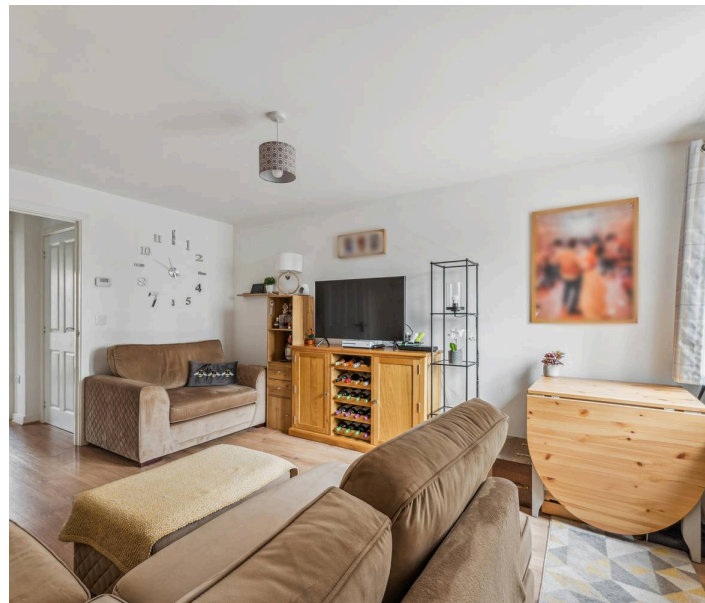
Council Tax band: D

Tenure: Freehold

EPC Energy Efficiency Rating: B

EPC Environmental Impact Rating: B

- A fabulous three-bedroom townhouse located on a popular street on the Windrush development.
- Three double bedrooms, master bedroom with ensuite shower room and space for dressing room.
- Two allocated parking spaces.
- Kitchen/breakfast room with french doors leading to the garden.
- Within walking distance of all local amenities and close to nearby transport links such as the A40 and bus stop for the S1 bus.
- Rear garden with decking and patio.

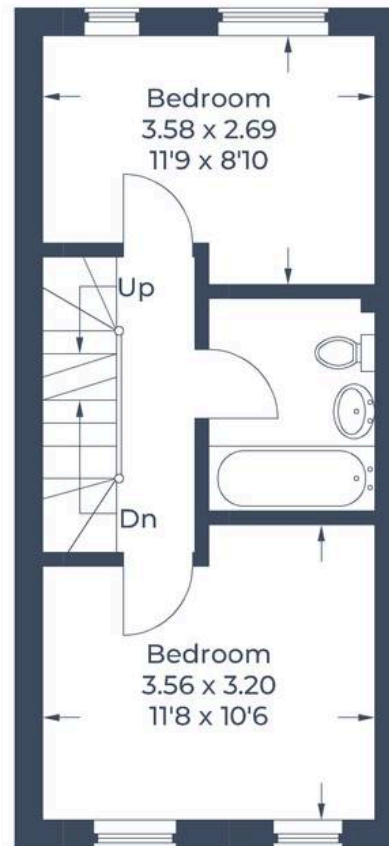




Approximate Gross Internal Area
Ground Floor = 32.8 sq m / 353 sq ft
First Floor = 30.6 sq m / 329 sq ft
Second Floor = 30.6 sq m / 329 sq ft
Total = 94.0 sq m / 1,011 sq ft



Ground Floor



First Floor



Second Floor



Simpsons Witney Branch

4 Langdale Court Witney, Oxfordshire - OX28 6AD

01993 835030 • witney@simpsonsproperty.com • www.simpsonsproperty.com/