



13a Bridge Street, Witney



13a Bridge Street

Brought to market with no onward chain is this one-bedroom bungalow located in a desirable location within walking distance of the town centre.

Council Tax band: B

Tenure: Freehold

EPC Energy Efficiency Rating: D

EPC Environmental Impact Rating: E

- Brought to market with no onward chain.
- A great opportunity to purchase this one-bedroom bungalow located in a desirable location within walking distance of the town centre.
- Open plan kitchen/dining/sitting room.
- Double bedroom.
- Bathroom with bath and shower over.



Bridge Street - Witney

Approximate Gross Internal Area = 44.7 sq m / 481 sq ft

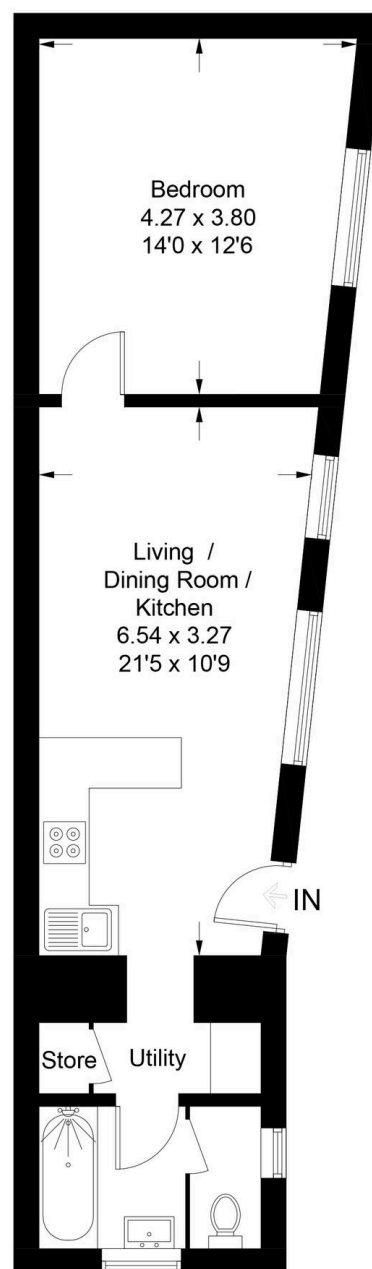


Illustration for identification purposes only, measurements are approximate,
not to scale. Fourlabs.co © (ID1269632)



Simpsons Witney Branch

4 Langdale Court Witney, Oxfordshire - OX28 6AD

01993 835030 • witney@simpsonsproperty.com • www.simpsonsproperty.com/