



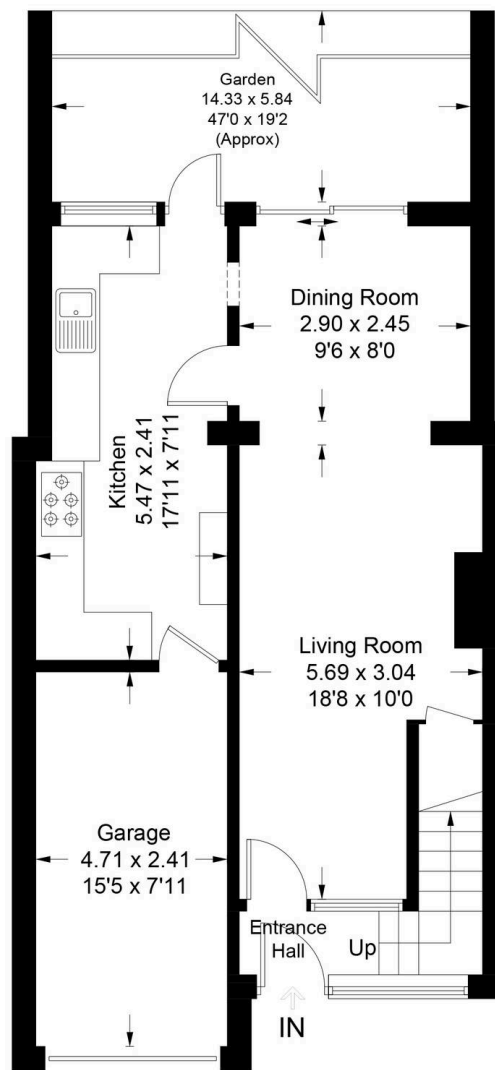
36 Parsons Mead, Abingdon
Abingdon

In Excess of **£350,000**

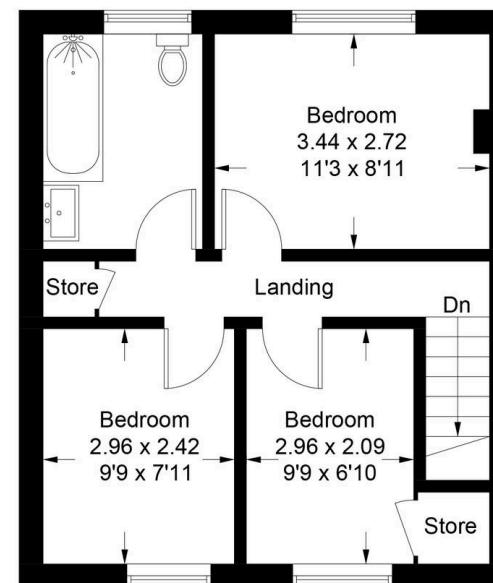
Simpsons
The Pro**active** Agent

Parsons Mead - Abingdon

Approximate Gross Internal Area = 91.6 sq m / 986 sq ft



Ground Floor



First Floor

36 Parsons Mead

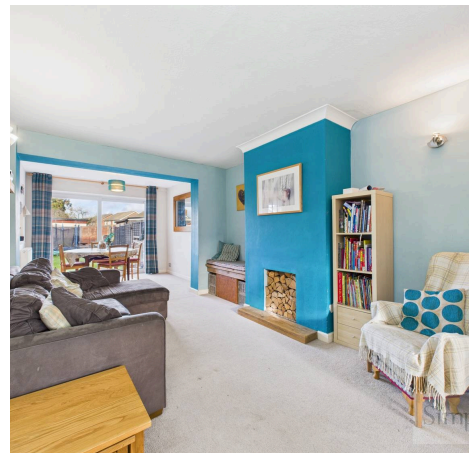
Abingdon, Abingdon

A spacious three bedroom terraced home located on Parsons Mead in North Abingdon, the ground floor of this home offers entrance hall, sitting room/dining area, kitchen located on Parsons Mead in North Abingdon.

Council Tax band: C

Tenure: Freehold

- A well proportioned three bedroom home with double glazed windows, and gas central heating.
- The ground floor comprises an entrance hall, with stairs leading to the first floor, on the ground floor you walk through the living room/ dining area into with the kitchen.
- The first floor has two double bedrooms and a third single bedroom, which could be used as an office, nursery or dressing room.
- Single Garage with built in storage & Driveway for two vehicles.
- Walking distance to multiple primary schools & all Abingdon secondary schools and the X1 bus route.
- In summary, a superb family home in a convenient and popular part of town within walking distance to nearby shops, transport links and amenities.



SCAN THE
QR CODE
TO BOOK
YOUR VIEWING



