



8 Palmer Place, Abingdon

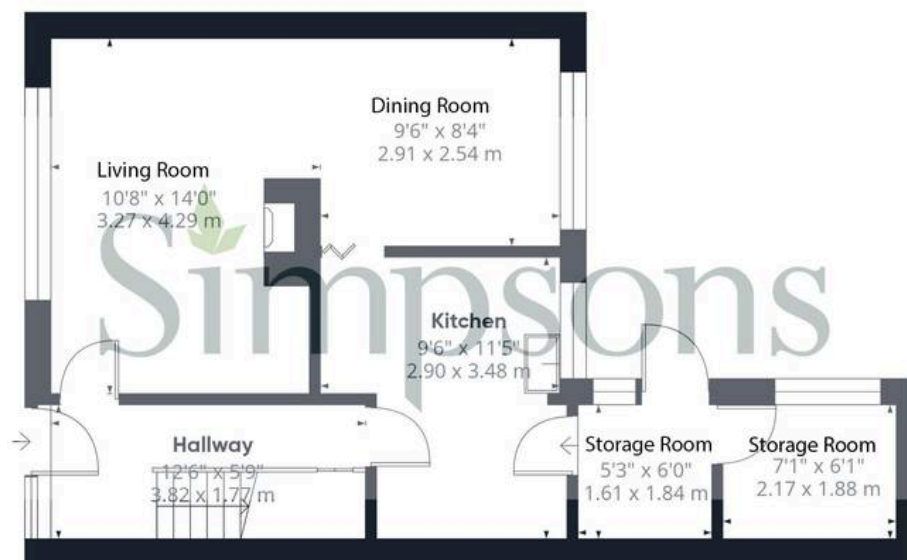
Abingdon

Simpsons

The Pro**active** Agent

In Excess of **£250,000**

Palmer Place Abingdon



Floor 0



Floor 1



Approximate total area⁽¹⁾

836 ft²

77.7 m²

Reduced headroom

9 ft²

0.8 m²

(1) Excluding balconies and terraces

Reduced headroom

Below 5 ft/1.5 m

Calculations reference the RICS IPMS 3C standard. Measurements are approximate and not to scale. This floor plan is intended for illustration only.

GIRAFFE360

8 Palmer Place

Abingdon, Abingdon

A three bedroom family home offered for sale with no onward chain, with great potential to add value and make your own.

Council Tax band: C

Tenure: Freehold

- This family home is within easy reach of local schools, transport links and walking distance to Abingdon Town Centre.
- This property benefits from parking to the rear with a generous rear/side garden. The property has three bedrooms with two generous reception rooms on the ground floor.
- On the first floor are three bedrooms that share a family bathroom.
- The property has two useful outdoor storage room, ideal for additional storage or potential utility room.
- Off street parking to the rear of the property.
- Construction type - Laing Easiform (please ask for further detail).
- No onward chain



SCAN THE
QR CODE
TO BOOK
YOUR VIEWING

